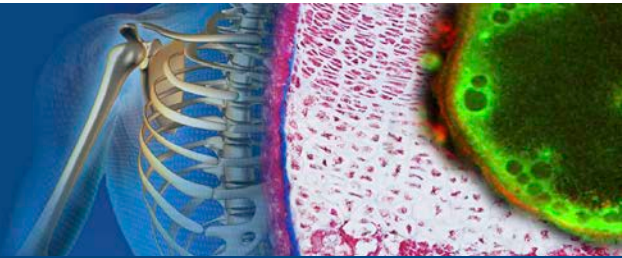


# CENTER for MUSCULOSKELETAL RESEARCH



## 11<sup>th</sup> Annual CMSR Symposium

Wednesday, October 27, 2021

Zoom Registration Link [https://urmc.zoom.us/webinar/register/WN\\_RVdp9ANIQHqQzeYRYI\\_s7g](https://urmc.zoom.us/webinar/register/WN_RVdp9ANIQHqQzeYRYI_s7g)

### Trainee Presentations Session - Class of 1962 Auditorium

9:00 AM Welcome & Opening Remarks Awad, Rubery

#### Trainees Presentations

Post-Doc Rosier Awards Finalists

9:15 AM Defining the epitenon cellular environment Anne Nichols, PhD  
 9:27 AM Aged callus skeletal stem/progenitor cells contain an osteo-inflammatory subcluster with increased IRF-STAT pathways Xi Lin, PhD  
 9:39 AM Novel strategies to purify murine mesenchymal stem cell (MSC) ex vivo reveal differential characteristics of bone marrow and bone derived stromal cells Yuko Kawano, MD, PhD

Pre-Doc Rosier Awards Finalists

9:51 AM Mitochondrial function controlled by the permeability transition pore/Cyclophilin D is an important regulator of bone phenotype and skeletal aging Rubens Sautchuk Jr  
 10:03 AM Inducible depletion of Scx-lin cells disrupts tendon homeostasis and accelerates aging-associated compositional and structural changes in the extracellular matrix Antonion Korcari  
 10:15 AM High-throughput semi-automated segmentation of murine hindpaw micro-CT datasets identifies the cuboid as a reliable longitudinal biomarker of arthritic progression in TNF-Tg mice H. Mark Kenney  
 10:27 AM Semi-randomized zwitterionic peptides provide anti-fouling behavior to nanoparticles Clyde Overby  
 10:39 AM Human Tissue-on-Chip (hToC) platform for modeling inflammation, fibrosis, and cell cycle regulation in fibrovascular tendon healing Raquel Ajalik  
 10:51 AM Effects of elevated lactate levels in acute myeloid leukemia on the bone marrow microenvironment through polarization of leukemia-associated macrophages Celia Soto  
 11:03 AM Health care disparities in complication and mortality rates following surgical management of cauda equina syndrome Peter Joo

11:30 AM 3MT (3-Minute Teasers) – Poster Award Finalists

12:15 PM **Poster Session - Helen Wood Hall - Evarts Lounge**

### Plenary Session - Class of 1962 Auditorium

#### CMSR Faculty Spotlight

2:40 PM **Roman Eliseev, MD PhD**  
The role of mitochondria in bone health and disease  
 3:00 PM **Calvin Cole, PhD**  
Elucidating the Mechanism(s) of Skeletal Muscle Loss in a Murine Model of Pancreatic Cancer  
 3:20 PM **Benjamin Frisch, PhD**  
The dysfunctional microenvironment in the leukemic bone marrow  
 3:40 PM **Jennifer Jonason, PhD**  
All That's Certain in Osteoarthritis: Death and the SASP



#### Keynote Presentation

4:00 PM **Mary Bouxsein, PhD**  
**Fractures in Older Adults: Beyond BMD**  
 5:30 PM **Dinner & Awards - Helen Wood Hall - Evarts Lounge**

MEDICINE of THE HIGHEST ORDER

