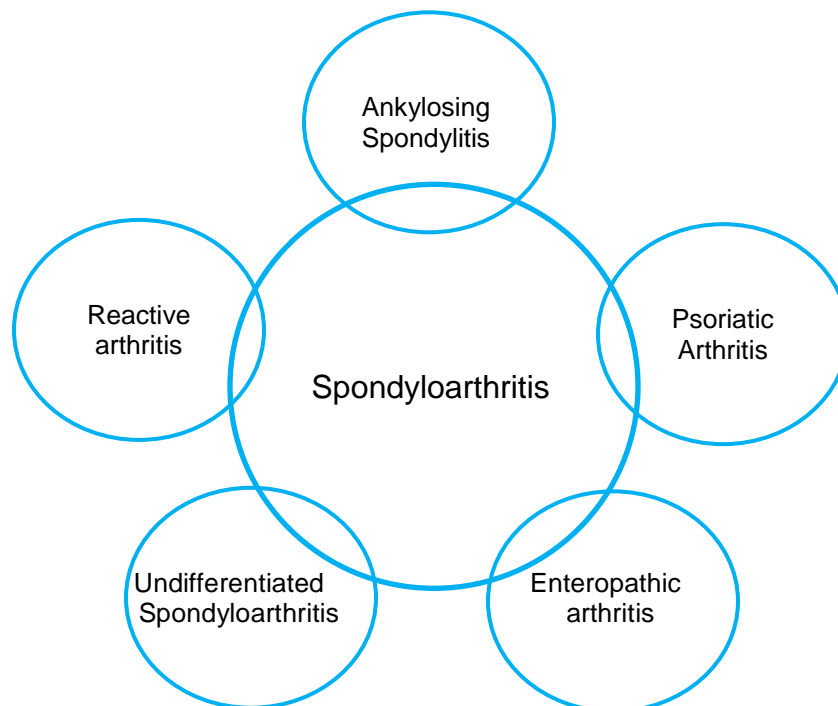


Ankylosing spondylitis- related information

Spondyloarthropathies



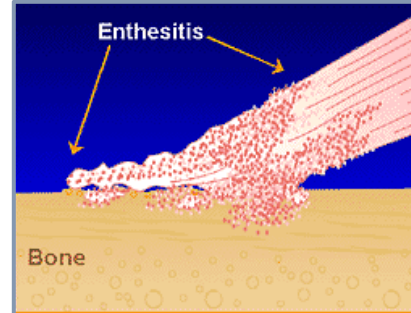
- Spondyloarthritis is a group of inflammatory diseases characterized by inflammation of axial joints along with possible presence of peripheral arthritis, enthesitis and / or dactylitis.
- This heterogeneous group share common genetic, clinical and radiological features.

Axial spondyloarthropathies

- Axial spondyloarthropathies (axSpA) are a group of chronic inflammatory rheumatic diseases that primarily involve the sacroiliac joints and spine. It encompasses the following
 - Ankylosing spondylitis (AS) - clinical features and radiographic findings of sacroiliitis.
 - Non-radiographic axSpa (nr-axSpA) - clinical features in the absence of radiographic findings.

What is enthesitis?

- Entheses are the insertion sites of tendons, ligaments, fascia or capsules to the bone surface.
- Enthesitis is the inflammation of the entheses and is a key feature of spondyloarthropathies.
- Common locations for enthesitis include Achilles tendon, plantar fascia, medial femoral condyle and lateral epicondyle.



What is dactylitis?

- Dactylitis or “sausage deformity”- is diffuse, often uniform swelling of the entire digit.
- Although a common finding in spondyloarthropathies, dactylitis is not a specific feature.



Dactylitis – image from alamy.com

Extra articular manifestations of AS

- Eye disease: Uveitis is the most common extra articular manifestation of axial spondyloarthritis (often acute, anterior and unilateral).
- Heart disease: There is a higher rate of conduction abnormalities, valvular heart disease and cardiomyopathies in patients with AS compared to normal population.
- Lung disease: Apical fibrosis and bronchiectasis.
- Bone: Osteoporosis is common in patients with AS.
- General health: Fatigue is a frequent complaint of patients with AS.

Contact information for the URM C Rheumatology clinic:



- Phone number: 585-486-0901
- Fax number: 585-340-5399

