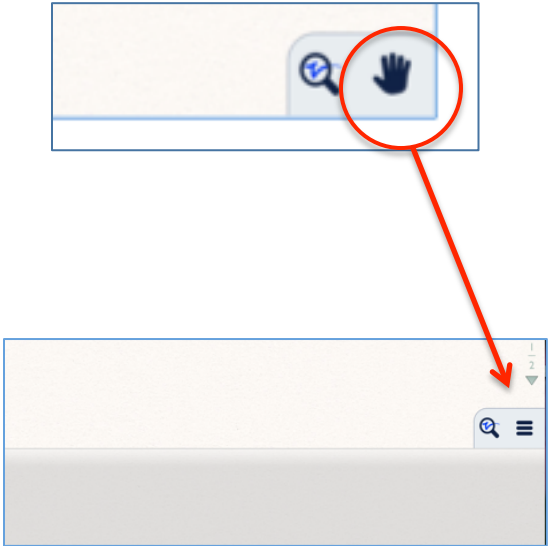


# Palm Rest

In drawing and highlighting mode, the **palm rest icon** is available.

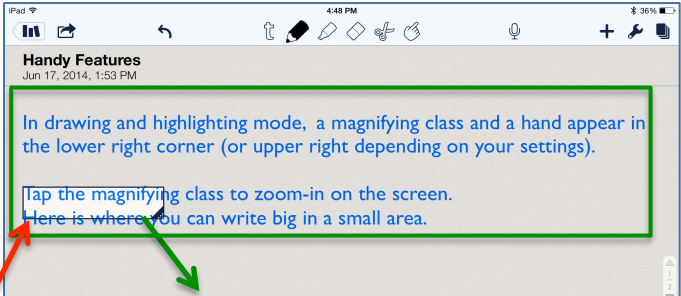
Tap the hand to turn it to 3 horizontal lines, touch and drag up or down to cover the part of the screen where your palm might make contact.

Palm rest can be configured in settings to pull down from the top instead of up from the bottom.

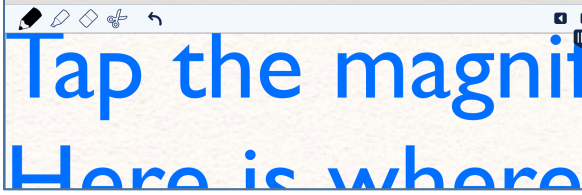


# Magnify Tool

The magnify tool allows you to zoom-in to a tiny part of the screen where you want to write or draw something.



Tap the magnify tool, move the magnified area to where you want to write or draw.



Tap the magnify glass again to zoom-out and your writing or drawing becomes smaller.

