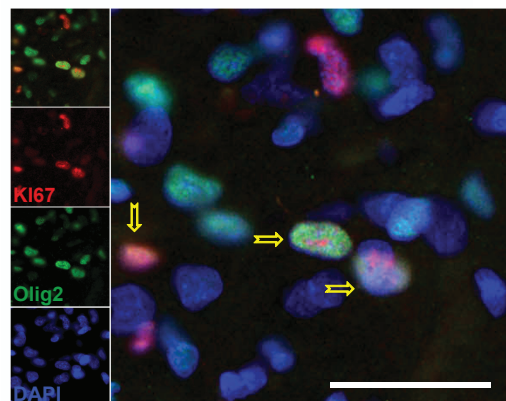


FIGURE S1

A

Phenotypic characterization of primary glioblastomas (GBM) and GBM cell lines		
	PRIMARY GBM (n = 3)	GBM CELL LINES (n = 3)
% single antigen expression (mean ± SEM, range) among the total number of glioma cells		
% OLIG2 ⁺	44.6±5.4% (35-53%)	32.3±4.5% (23-39%)
% Ki67 ⁺	30.8±7.9% (20-46%)	32.3±11.3% (14-53%)
% SURVIVIN ⁺	74.2±4.2% (67-81%)	56.5±7.5% (46-71%)
% SOX2 ⁺	ND	76.3±16.8% (43-100%)
% CD133 ⁺	4.6±1.5% (0-9%)	35.8±10.7% (8-67%)
% antigen X expression (mean ± SEM, range) among the total number of A2B5⁺ glioma cells		
% OLIG2 ⁺ in A2B5 ⁺	44.6±5.4% (35-53%)	32.3±4.5% (23-38%)
% Ki67 ⁺ in A2B5 ⁺	30.8±7.9% (21-46%)	32.3±11.3% (14-53%)
% SURVIVIN ⁺ in A2B5 ⁺	74.2±4.2% (67-82%)	56.5±7.5% (46-71%)
% CD133 ⁺ in A2B5 ⁺	4.6±1.5% (0.5-9%)	63.4±13.1% (12-85%)
% A2B5 expression (mean ± SEM, range) among the total number of glioma cells expressing X antigen		
% A2B5 ⁺ in OLIG2 ⁺	82.1±8.2% (72-98%)	97.3±1.4% (95-100%)
% A2B5 ⁺ in Ki67 ⁺	74.8±12.9% (57-100%)	99.1±0.9% (97-100%)
% A2B5 ⁺ in SURVIVIN ⁺	74.7±12.3% (60-99%)	99.1±0.15% (98-100%)
% A2B5 ⁺ in CD133 ⁺	74.3±6.7% (61-96%)	88.4±6.7% (62-97%)
% A2B5 ⁺ in SOX2 ⁺	ND	99.4±0.6% (98-100%)

B



C

Immunohistochemical analysis of human primary gliomas					
Expression	OLG	OLG-AST	AST	GBM	TOTAL
Samples	3	3	3	4	13
% Ki67	5.1±3.8	4.9±2.8	1.5±0.5	20.3±3.1	8.9±2.5
% Olig2	49.3±16.6	47.1±4.7	32.7±4.5	46.9±3.8	44.2±4.1
% Ki67 ⁺ Olig2 ⁺	3.0±1.9	4.0±2.4	1.5±0.5	15.7±2.5	6.8±1.9
% Ki67 ⁺ in Olig2 ⁺	4.7±2.3	8.1±4.7	4.2±1.1	33.7±5.2	14.3±4.1
% Olig2 ⁺ in Ki67 ⁺	66.4±8.7	76.2±11.6	90.4±1.4	77.5±3.1	77.6±3.8