

November 2023 Institute for Human Health and the Environment News Bulletin [IHHE Nuntium]

Cuadra, Gabriela C <Gabriela_Cuadra@URMC.Rochester.edu>

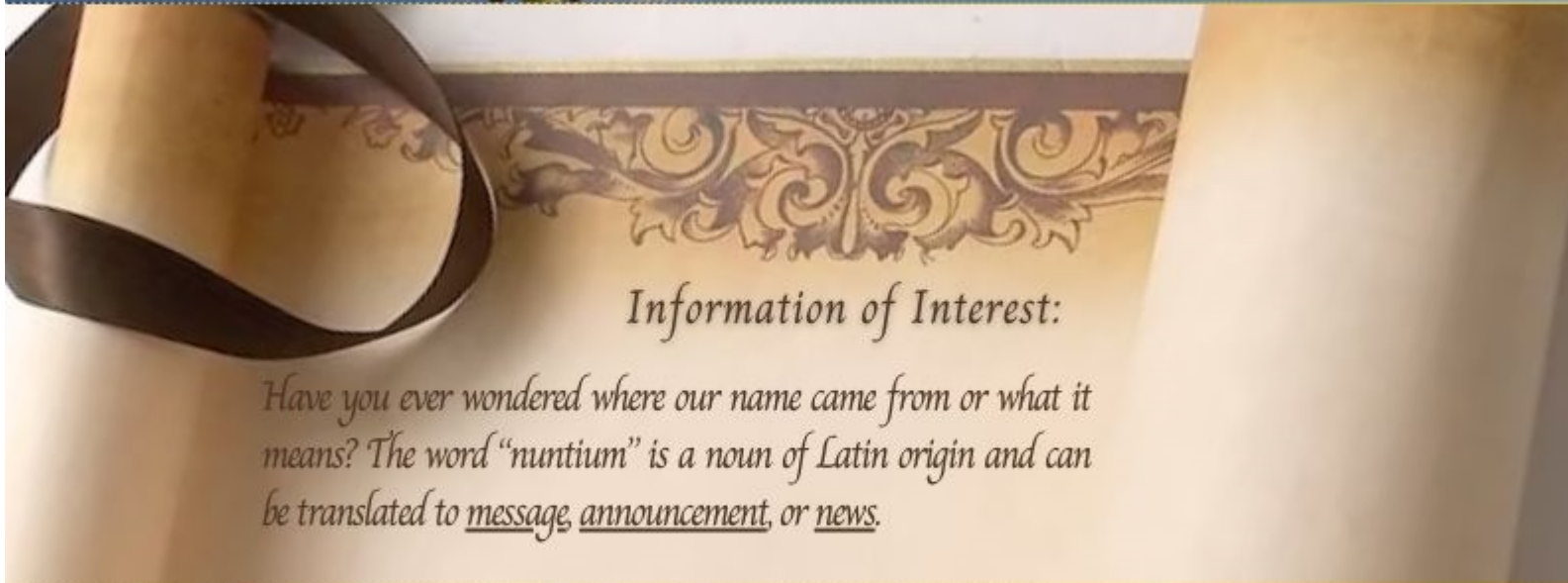
Wed 11/15/2023 1:30 PM

To: Robinson, Ann <ann.robinson@rochester.edu>; Gabalski, Maureen <maureen.gabalski@rochester.edu>; Lou, Valerie <Valerie_Lou@URMC.Rochester.edu>; Becker, Jennifer D <JenniferD_Becker@URMC.Rochester.edu>; Lawrence, Paige <Paige_Lawrence@URMC.Rochester.edu>; Noonan, Patricia <Patricia_Noonan@urmc.rochester.edu>; Hopke, Philip <Philip_Hopke@URMC.Rochester.edu>; Jarvinen-Seppo, Kirsi <Kirsi_Jarvinen-seppo@URMC.Rochester.edu>; Mayer-Prosche, Margot <Margot_Mayer-Prosche@URMC.Rochester.edu>; McCall, Matthew <Matthew_Mccall@URMC.Rochester.edu>; McGrath, James <jmcgrath@bme.rochester.edu>; McIntosh, Scott <Scott_McIntosh@URMC.Rochester.edu>; O'Connor, Tom G (Psychiatry) <Tom_OConnor@URMC.Rochester.edu>; Pryhuber, Gloria <Gloria_Pryhuber@URMC.Rochester.edu>; Rahman, Irfan <Irfan_Rahman@URMC.Rochester.edu>; Robert, Jacques <Jacques_Robert@URMC.Rochester.edu>; Thurston, Sally <Sally_Thurston@URMC.Rochester.edu>; Wu, Jing (Jason) <Jing_Wu@URMC.Rochester.edu>; Wyatt, Jeff <Jeff_Wyatt@URMC.Rochester.edu>; Abu-Ba'are, Gamji Rabi <GamjiRabi_Abubaare@URMC.Rochester.edu>



INSTITUTE FOR HUMAN HEALTH AND THE ENVIRONMENT NUNTIVM

November 2023 Issue



Information of Interest:

Have you ever wondered where our name came from or what it means? The word “nuntivm” is a noun of Latin origin and can be translated to message, announcement, or news.

INTERVIEWS OF INTEREST



Elizabeth Plunk, MS

UTC alum conducts unique research on widely used ‘forever chemical’-
-One of our current Toxicology students and PhD candidate was interviewed by her former *alma mater*, The University of Tennessee at Chattanooga, on her journey through the world of research and her latest scientific pursuits.

UPCOMING SEMINARS

Environmental Chemical Impact on the Host–Microbiome Dialogue

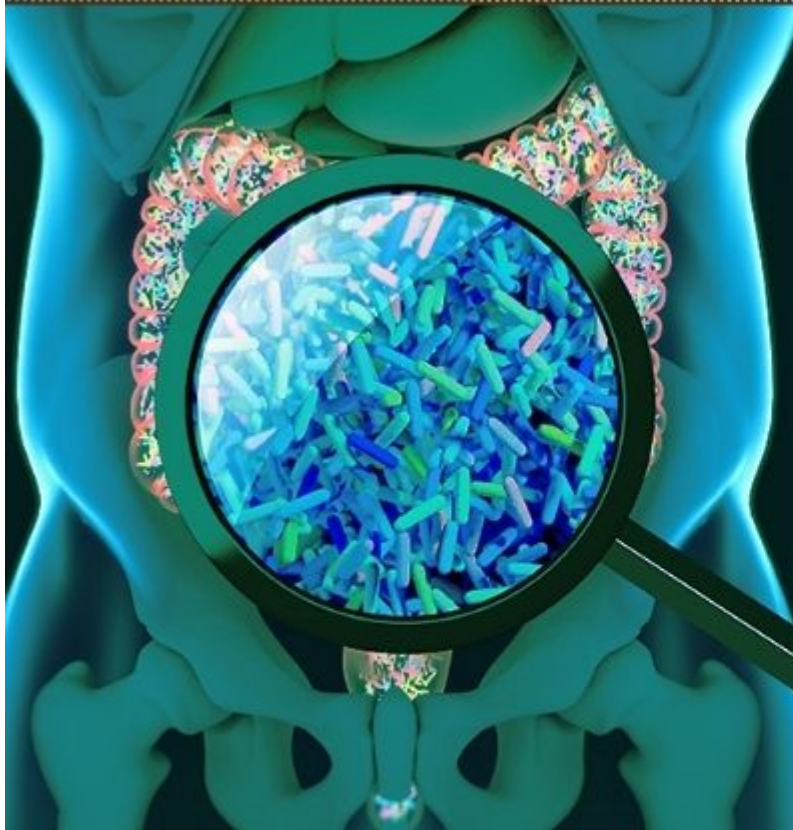
THU, NOV 16 @ 11:00 AM
Via Zoom | Meeting ID:
952 2821 0053



Andrew Patterson, PhD
Professor, Pennsylvania State University



[CLICK HERE TO JOIN DR. PATTERSON'S
SEMINAR](#)



Gut Microbiota Regulation of Host Immunity Determines Osteomyelitis Severity in Obesity- related Type 2 Diabetes

THU, NOV 30 @ 11:00 AM
URMC | 4-8820



Steven Gill, PhD
Professor, University of Rochester

EMPLOYMENT OPPORTUNITIES

Biologists/Toxicologists for the EPA's Existing Chemicals Program

Please contact Yvette Selby-Mohamadu (Selby-Mohamadu.Yvette@epa.gov) or Iris Camacho (Camacho.iris@epa.gov) if you have any questions or need further information.



[CLICK HERE TO VIEW/APPLY - USAJOBS WEBSITE](#)

Environmental Health Engagement
Coordinator, Health Project
Coordinator for the Institute of
Human Health and the Environment

Become a part of the team here at the
IHHE. Please contact Katrina Korfmacher
(Katrina_Korfmacher@urmc.rochester.edu)
if you have any questions or need further
information.



[CLICK HERE TO VIEW/APPLY - UR CAREERS
WEBSITE](#)

FUNDING OPPORTUNITY

Applications Now Open: 2024 Capacity Building Project Program

The EHSC Community Engagement Core is continuing the Capacity Building Project program in 2024 to provide funding for local organizations to grow their engagement in environmental health. The EHSC will provide up to \$10,000 for one or two Capacity Building Projects in 2024. Nonprofit organizations are eligible to apply. Click below for more information.



[CLICK HERE TO VIEW/APPLY - CEC CAPACITY
BUILDING PROJECT 2024](#)

SPOTLIGHT

CONGRATULATIONS TO DR. THOMAS LAMB!



Thomas Lamb successfully defended his PhD Thesis, *Chemical Characterization and Lung Toxicity of Humectants and Flavored E-cigarettes*, on Tuesday, November 7th, 2023, earning his degree in Toxicology under the mentorship of Dr. Irfan Rahman.

HISPANIC HERITAGE SCIENCE CELEBRATION



PhD Candidates Darline Castro-Melendez, Microbiology and Immunology, (right) and



Janiret Narvaez Miranda, Translational Biomedical Sciences, (left) celebrated Hispanic Heritage Month by sharing information on the work of Hispanic scientists with their Science Encounters table on air quality and health and on the properties of viruses at the Rochester Museum & Science Center.

WELL, THAT'S A WRAP!

If you have any content you would like for us to feature in our next issue of the IHHE Nuntium, please email us at ihhe@urmc.rochester.edu with the information and photos you would like to share.

FOLLOW US ON



UR INSTITUTE FOR HUMAN
HEALTH AND THE
ENVIRONMENT



@UR_IHHE

IHHE.URMC.EDU

[Gabriela Cuadra](#)

Administrative Assistant

[Department of Environmental Medicine](#)

[Institute for Human Health and the Environment](#)

(585) 275 - 6378

Upcoming out-of-office dates: Nov. 20th to Nov. 22nd