



*Western Region Emergency  
Communications, Knowledge and  
Information Tests*



**WRECK IT 2015**

# **Final Planning Meeting**

**WNY, September 16, 2015**

**Finger Lakes, September 28, 2015**

## Exercise Platform Google Account



- [wreckit2015player@gmail.com](mailto:wreckit2015player@gmail.com)
  - Access tools, calendar and maps in the Google **WRECKIT** *player* account
- Exercise submissions FROM PLAYERS should be emailed to [wreckit2015@gmail.com](mailto:wreckit2015@gmail.com) account
- **FINAL PLANNING DOCUMENTS** will be generated through this account

## Completed Pre- Exercise Activities



- **August 8<sup>th</sup> Radio Exercise**
  - Tested Hospital Status reports



- **September 10<sup>th</sup> PA - Cross-border TTX**
  - Best practices/ gaps working across the border

# Who is Participating



## **Unprecedented number of agencies participating!**

- Local and state emergency management (DHSES & OFPC)
- Local and state health
- Local and state law enforcement
- Department of Labor
- Department of Transportation
- NWS Buffalo and Binghamton
- Regional hospitals and systems
- Long Term Care facilities
- Homecare agencies
- New York State Thruway and Department of Transportation
- State Parks and park police
- New York Power Authority and local utility companies
- National Guard
- Paid and volunteer ambulance corps
- Private Industries (Food Service Industry)
- Mental Health
- 211
- American Red Cross
- Mutual Aid Plans
- Educational Institutions
- RACES/ ARES

# General Objectives



1. Gain, maintain and assess situational awareness – information sharing\*
2. Activate Operation/Command Centers
3. Mass care for first 48 hours
4. Resource management
5. Volunteer coordination

*\*Information Sharing is a key capability focus for all agencies.*

## *1<sup>st</sup> Year Design Goals*



- Identify and define issues
- Evaluate personnel logistics:
  - Right location; Right technology and support documents; Able to access request systems and local internet; Interface with home agency networks
- Identify how State and Local EOC's typically function, and the players role
- Move information to and from proper locations
  - Assess and communicate potential impacts
  - Situation status updates, needs, and processing official communiques.



# Scenario and Breakdown of Anchoring Activities by Day



# Exercise Week Breakdown



## Friday, October 2, 2015

National Weather Service Alert (NWS) sent electronically, indicating severe weather pattern forming in early part of the following week.



# Monday October 5, 2015



- Scenario: “Blue sky day”
- Weather:
  - Precipitation Western Southern Tier and Niagara Frontier: begins late this afternoon
  - Finger Lakes: begins this evening
  - Predominant type of precipitation is expected to be freezing rain
  - Ice accumulations of one to two inches of ice are possible
- Individual agency StartEx & activities
- Information sharing; What actions will you take re: credible information of a pending threat?

# Monday October 5, 2015



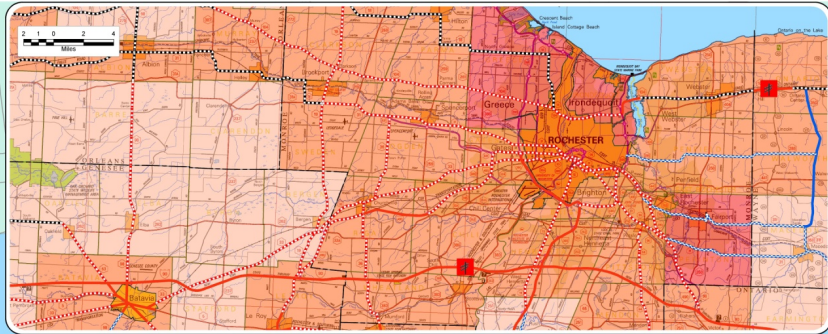
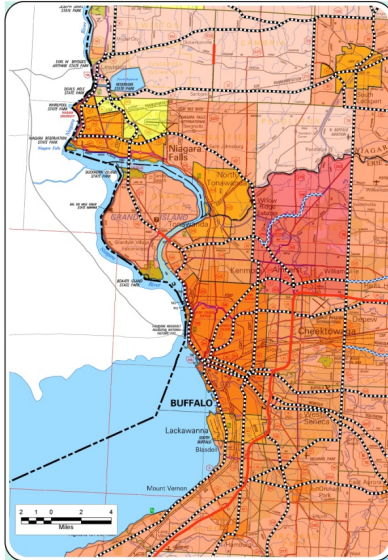
- **“Anchoring” activities:**
  - 0900 NWS Buffalo and 0930 Binghamton conference calls (consecutively)
  - NWS Briefing
  - Regional conference calls (agency-specific)
  - 20:00- Hospital HAvBED Survey activation

## Tuesday October 6, 2015

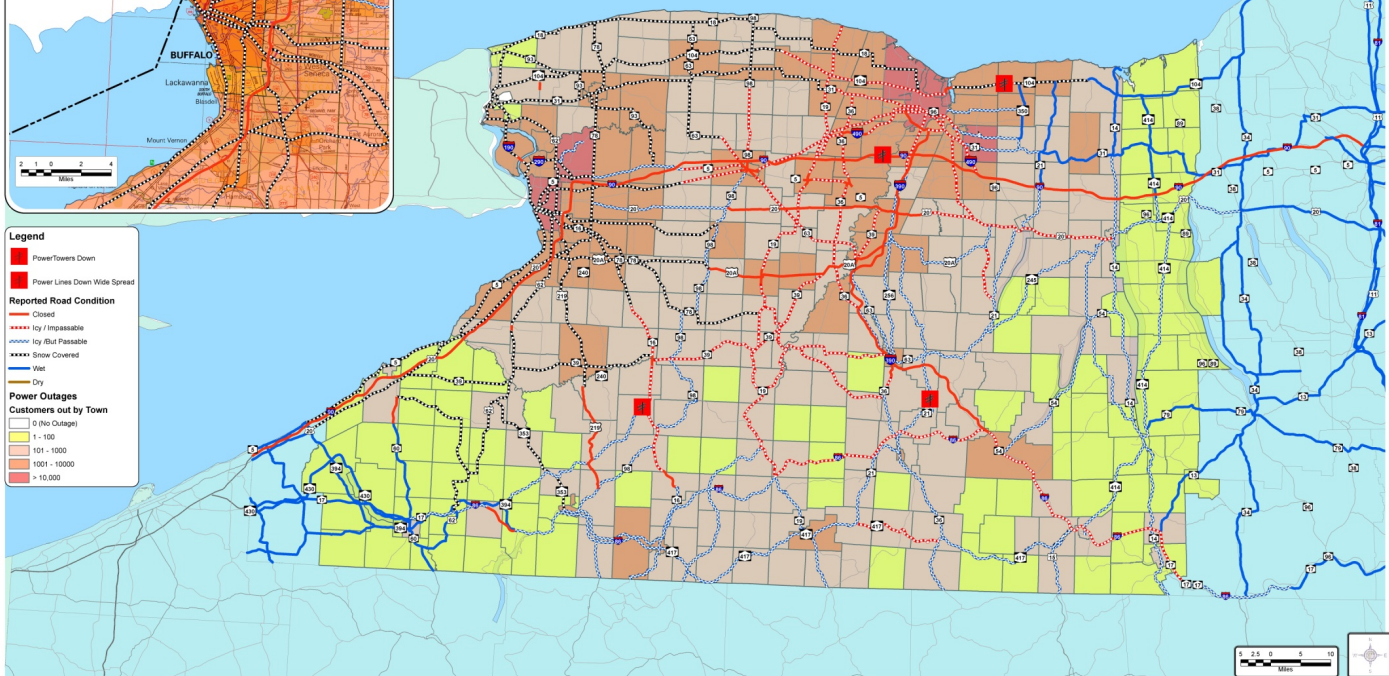


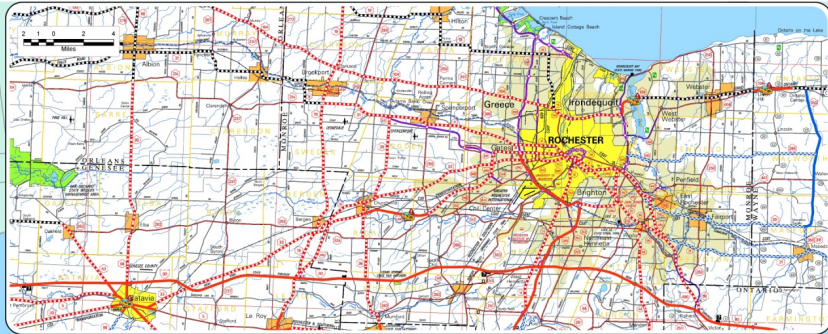
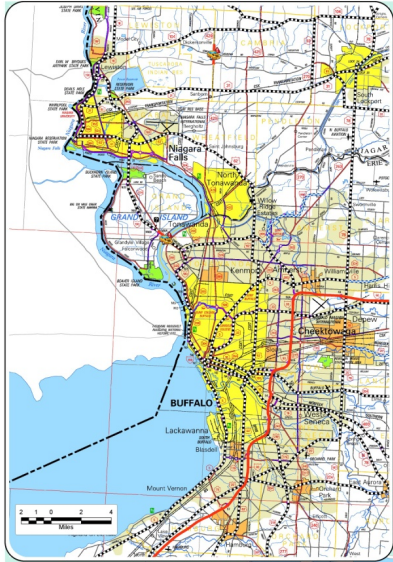
- Scenario
  - Greater than ½ inch of ice has covered most of region. Leaves are still on trees.
  - Transportation, utilities, communications, supplies, staffing are all impacted.
  - Many major WR roadways have been closed.
  - States of Emergency have been declared.



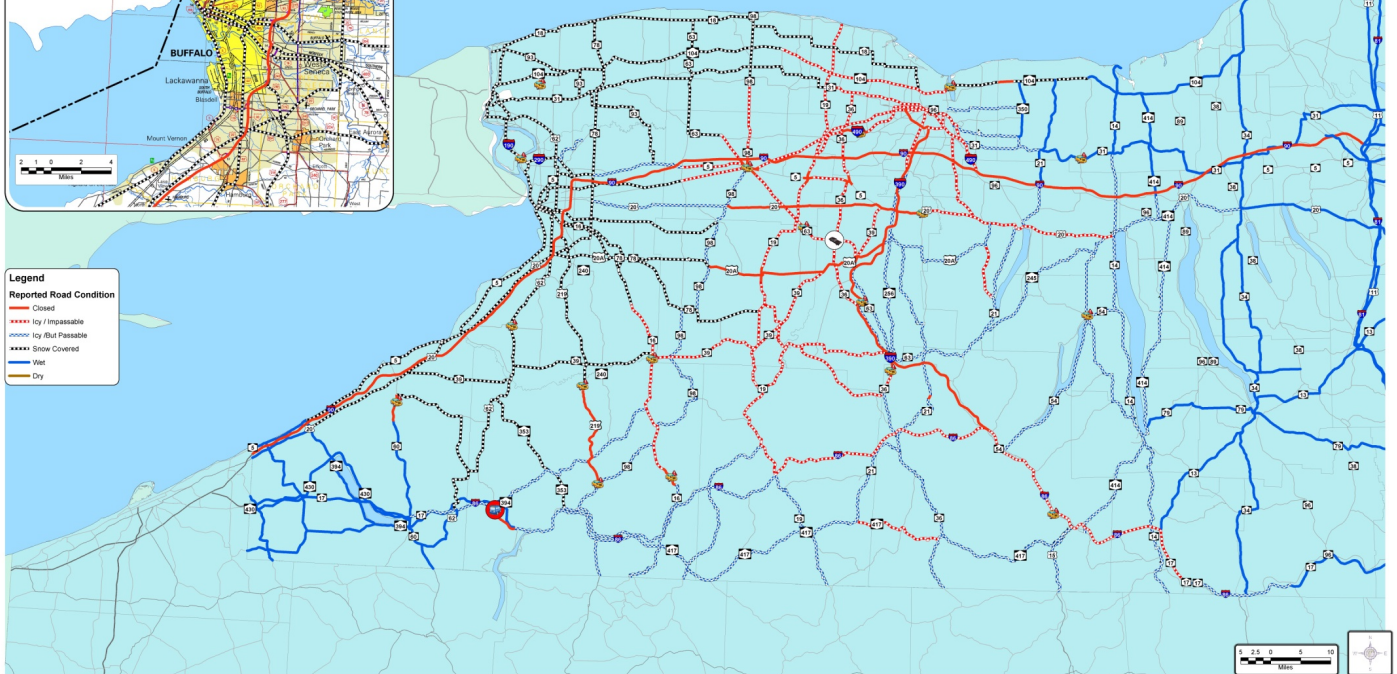


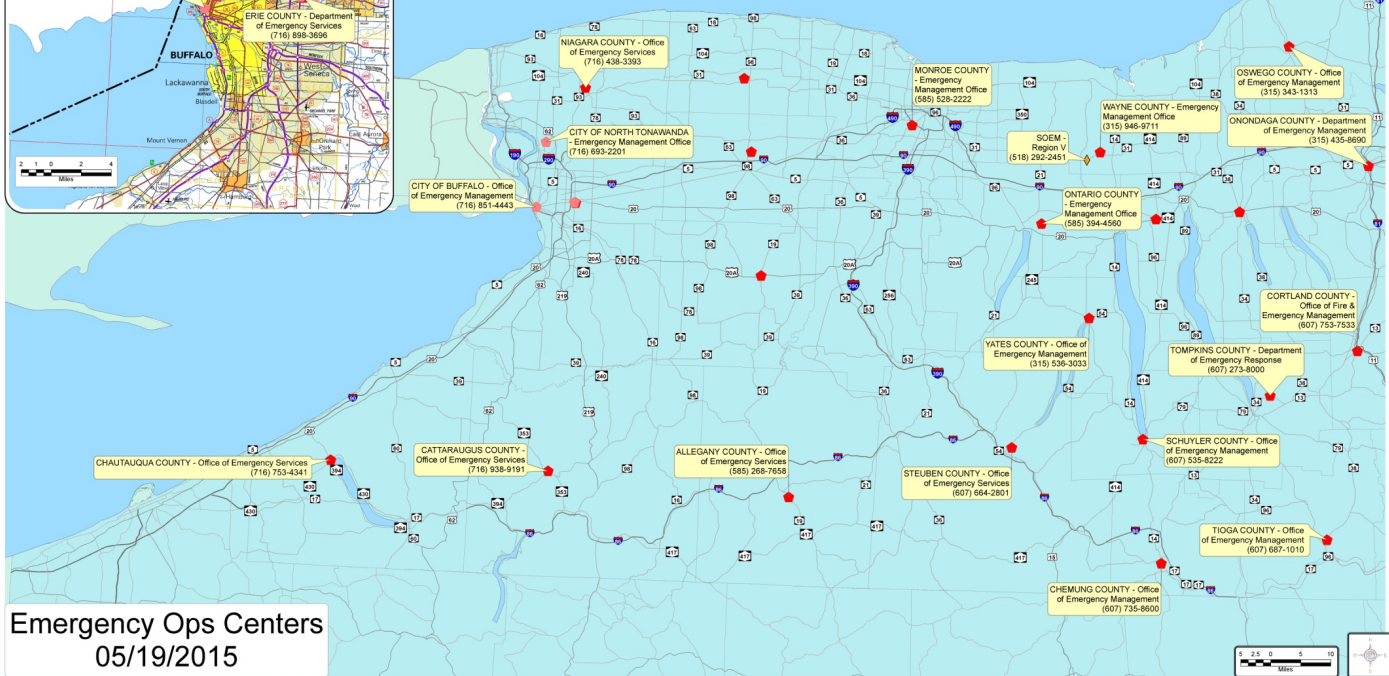
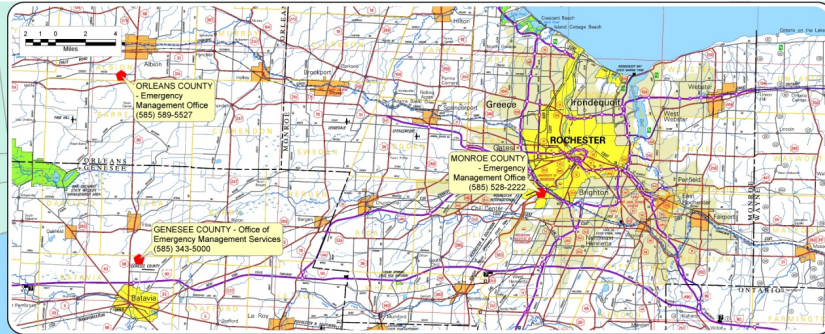
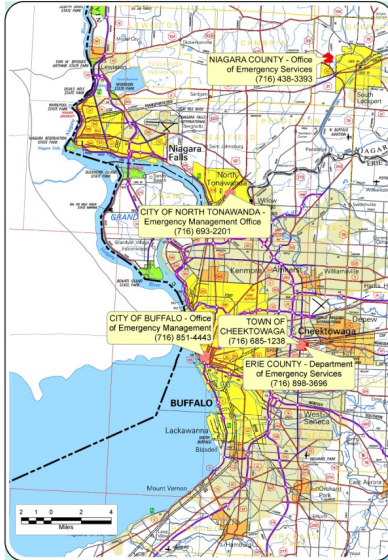
- Legend**
- Power/Towers Down
  - Power Lines Down Wide Spread
- Reported Road Condition**
- Closed
  - - - - - Icy / Impassable
  - - - - - Icy /But Passable
  - - - - - Snow Covered
  - Wet
  - Dry
- Power Outages Customers out by Town**
- 0 (No Outage)
  - 1 - 100
  - 101 - 1000
  - 1001 - 10000
  - > 10,000





- Legend**  
**Reported Road Condition**
- Closed
  - ⋯ Impassable
  - - - Snow Covered
  - Wet
  - Dry





Emergency Ops Centers  
05/19/2015

## Tuesday October 6, 2015

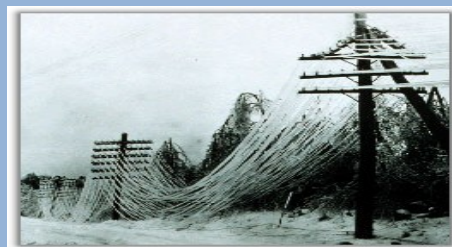


- 0800 StartEx sent via WRECKIT Gmail
- “Anchoring” activities:
  - 0900 NWS Buffalo and 0930 Binghamton conference calls
  - NWS briefings distribution
  - Internal agency full-scale & functional activities
  - EOC/HOC activations:
    - State EOC (Bunker)
    - NYSDOH WR HOC
    - DOT EOC
    - County EOCs, County Work Shops
    - Hospital/ Health facility EOCs
    - Other government and private Agency Emergency Operations
  - WNY County OEM Emergency Support Function Work Shop
  - Rochester Area and S. Tier Long Term Care MAP Evacuations
  - Hospital information and data sharing activities

## Wednesday October 7, 2015



- Scenario
  - Temperatures have fallen to below zero with winds ranging from 10 – 30 MPH.
  - Transportation, utilities, communications, supplies, staffing remain impacted.
  - Sheltering requests growing exponentially
  - Resources are becoming exhausted.





## Wednesday October 7, 2015



- 0800 StartEx announced via Gmail
- “Anchoring” activities:
  - Internal agency full-scale & functional activities continue
  - EOC/HOC activations:
    - County EOCs
    - Hospital/ Health facility EOCs
    - Other government and private Agency EOCs
  - WNY Long Term Care MAP Evacuations
  - Hospitals:
    - WRECKIT Memorial Repatriation and eFINDS
  - WNY Emergency Support Function-8 Work Shop

# Thursday AM October 8, 2015

## Road Closures TTx



- Pre-registration required. Clarion Inn, Batavia.
- Region-wide discussion-based activity on road closures
- Decision-making and communications
- Road closure procedures & expectations
- Impacts and prioritization
- Open to all interested stakeholders



# Thursday PM October 8, 2015

## Sheltering TTx



- Pre-registration required. Clarion Inn, Batavia
- Region-wide Sheltering discussion-based activity
  - Local, Regional, National capabilities
  - Resource demands during escalating & wide-scope event
  - Shelter information communications

# Daily Exercise Feedback



- Daily Exercise Feedback is requested via **a brief Survey Monkey.**
- Link to Survey Monkey ***To Be Provided***
  - Number participating at your agency
  - What other agencies did you interact with?
    - ❖ *Need to track everyone including those assets/personnel unexpectedly contacted for assistance or support. Sign in sheets and scribed notes; Scope and Data Tool; SM.*
  - Strengths, areas for improvement for your agency around the key capabilities (i.e., information sharing)
  - Exercise design comments (strengths, areas for improvement)

**Friday October 9, 2015**



**Regional After-Action Conference**

- ❖ What worked?
- ❖ What needs improvement?
- ❖ Next steps

Virtual participation will be available.

In person site TBD

# Exercise Packets



- Exercise Packets for use by your agency planners/ controllers to be distributed via Gmail, but also available on the Google Gmail site
  - Scenario Power Point
  - NWS briefing
  - Maps (Road Closures, Utility Outages, etc)
  - Communications Plan
  - Final ExPlan
  - Exercise Master Events Schedule
  - Scope and Data Collection form
  - Critical Tasks for agency types
  - *Exercise Evaluation Guides (EEGs) for hospitals only*

## SimCell



- Active Tuesday, October 6<sup>th</sup> & Wednesday, October 7<sup>th</sup> , 0800-1600
- Sim Cell Operations:
  - What if I need an inject?
  - What if I need to contact a non-participating agency?

## Exercise Control and Evaluation (C/E)



- Finalize your agency Controllers/ Evaluators
- **Hospitals:** Personalize Exercise Evaluation Guides; C/E Handbook
- Controller and Evaluator Briefing date:
- Assign active-day Survey Monkey Feedback completion



# Communications Plan



- Complete Survey Monkey for Communications Plan information  
<https://www.surveymonkey.com/r/86256G9>  
Will include a POC for all agencies in play that provide one.
- Will include Regional Planning Team contacts/ Regional Control/ and SimCell contacts



**Good Luck!**

