

## Lockdown Policy

Policy: The ability to lockdown of the Hospital in the event of an emergency event which threatens the safety of patients, employees, staff and visitors and/or hospital operations is of paramount important.

Procedures: Locking down the hospital is the process by which pedestrian and vehicular traffic is channeled to specific entry/exit points.

A lockdown may be directed by:

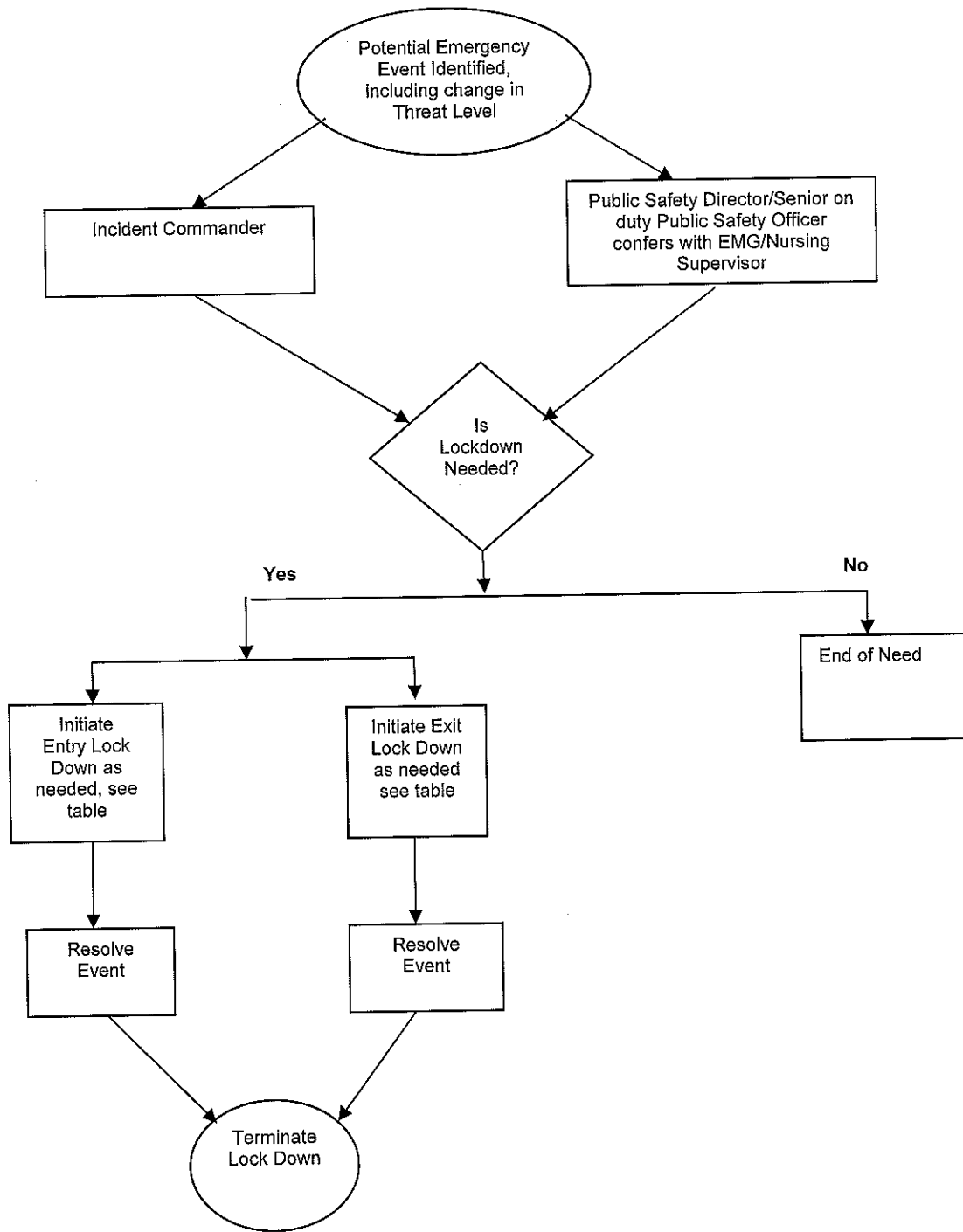
The director of public safety has the authority to defer and/or deny access based upon his/her assessment of the situation. It is preferable that the determination be made with consultation of members of the executive management group. However, in the event of a true emergency that requires immediate intervention, such as a CODE PINK or active shooter this action may be undertaken independently by the senior on duty public safety officer. In this event, the director of public safety will review the situation and his/her assessment with a member of the executive management group. During off hours this collaboration will be with the nursing supervisor.

During a CODE TRIAGE the lockdown decision rests with the incident commander.

### Occasions for lockdown

Event	Prevent Entry	Prevent Exit	
Power failure	X		
Earthquake	X		
Flooding	X		
Fire	X		
Bomb threat	X		
External Contamination	X	X	
Civil disturbance	X	X	
Hostage event	X		
Active Shooter	X		
Infant abduction	X	X	
Child Abduction	X	X	

(Editorial question: does this policy need to address closing the entire campus or simply locking the hospital)



Procedures:

Exit lockdown is for the propose of preventing individuals from leaving due to an existing hazard outside, whether it be a civil disturbance, possible exposure to a hazardous substance or the need to screen those leaving due to a missing infant/child.

Entry lockdown is for the purpose of preserving the hospital's ability to operate and respond to a possible emergency event such as a fire, flood or keeping contaminated individuals from entering.

Public safety will be responsible for the closing and locking of required doors and gates.

Additional staff may be required to control non-entry doors, such as fire exits.