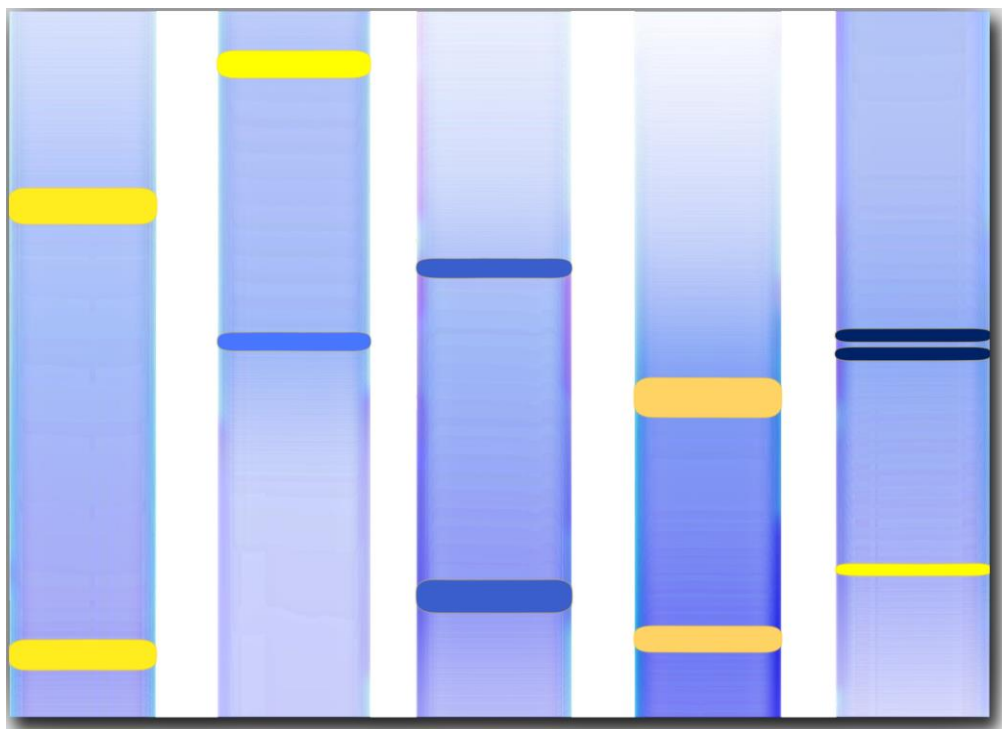


Fields Center for FSHD & Neuromuscular Research
University of Rochester Medical Center
Neuromuscular Disease Center
601 Elmwood Avenue, Box 673
Rochester, NY 14642

The 2014 Fields Center Patient Day was made possible through the generous support of Silvere van der Maarel, PhD, and the Leiden University Medical Center.

From Genetic Blueprint to Therapeutic Roadmap...



Artwork: DNA Vision ® Custom Rainbow Zoom by DNA Art US LLC
www.dna-art-us.com. Used with permission.

Fields Center Patient Day
Saturday, April 26, 2014

The Partners of the
Fields Center for FSHD & Neuromuscular Research
invite you to join us for the

2014 Fields Center Patient Day

Saturday, April 26, 2014

9:00 a.m. to 3:00 p.m.

University of Rochester Medical Center • Helen Wood Hall
255 Crittenden Blvd, Rochester, NY 14607

Our FSHD partnership – researchers, clinicians, patients and family members - has come a long way in the last five years. Please join us to hear internationally respected experts report back to you - telling you what we've learned, where we are and where we are heading. We'll touch on progress in the clinic, in the laboratories, and on the bridge from research to practice. This report is our shared story – written page by page during each research and clinic visit. Come join us to review the tale.



Featuring Presentations By:

Rabi Tawil, MD
University of Rochester
"Where We Are in the
Translational Process"

Silvere van der Maarel, PhD
Leiden University
"The Unifying Genetic Mechanism
In FSHD1 and FSHD2"

Stephen Tapscott, MD, PhD
The Fred Hutchinson Cancer
Research Center
"Opportunities for Therapeutic
Intervention and Milestones for Success"

Kathy Mathews, MD
University of Iowa
"Clinical Aspects of
Early Onset FSHD"

Rabi Tawil, MD
University of Rochester
"FSHD2: Differences and
Similarities With FSHD1"

Jeffrey Statland, MD
University of Rochester
"Recent Advances in Our Clinical
Understanding of FSHD"

And **"Ask the Experts"** panel discussions, led by scientists, clinicians, patients and family members to answer your questions about FSHD.



During our day together, we will discuss the most current information of interest to people with FSHD and their family members, including recent advances in the understanding of FSHD2, infantile FSHD and the presence of ocular and hearing issues. During breaks, we hope that you will join us for lunch and refreshments.

Registration begins at 8:30 a.m. The conference begins at 9:00 a.m. A continental breakfast and lunch will be served.

Parking is free and is available at the Saunders Research Building on the west side of Helen Wood Hall.



REGISTER NOW: SPACE IS LIMITED
Please respond by Monday, April 21, 2014.

For additional information or to register by phone, please
call Karen Lee at 585.275.3614 or **email us at FieldsCenter@urmc.rochester.edu**.
You can find us on the web at **www.urmc.rochester.edu/fields-center**