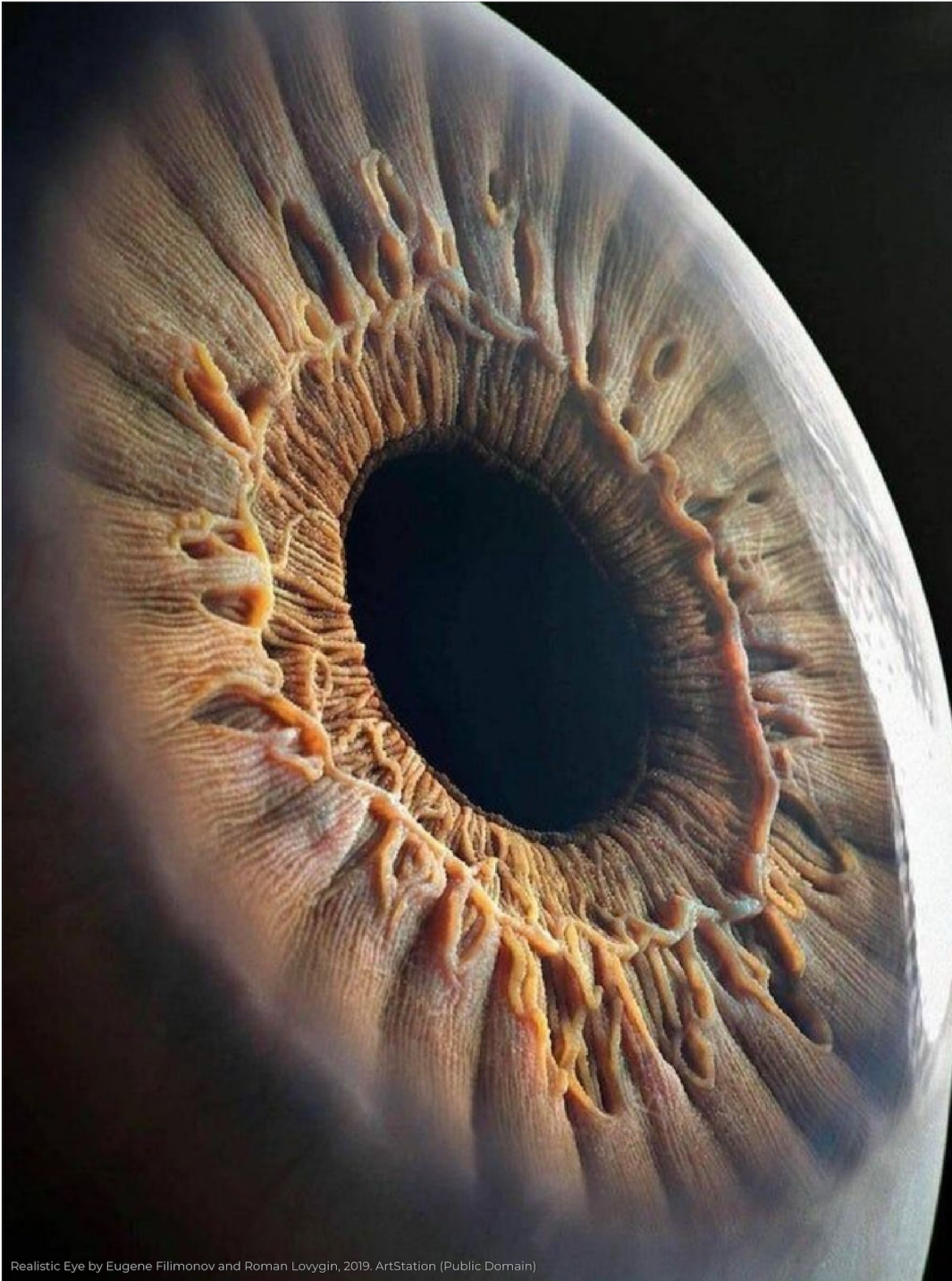
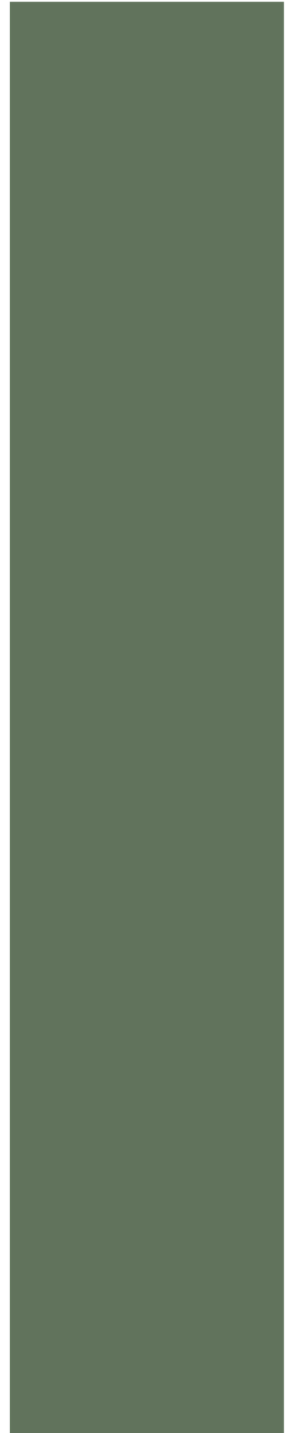


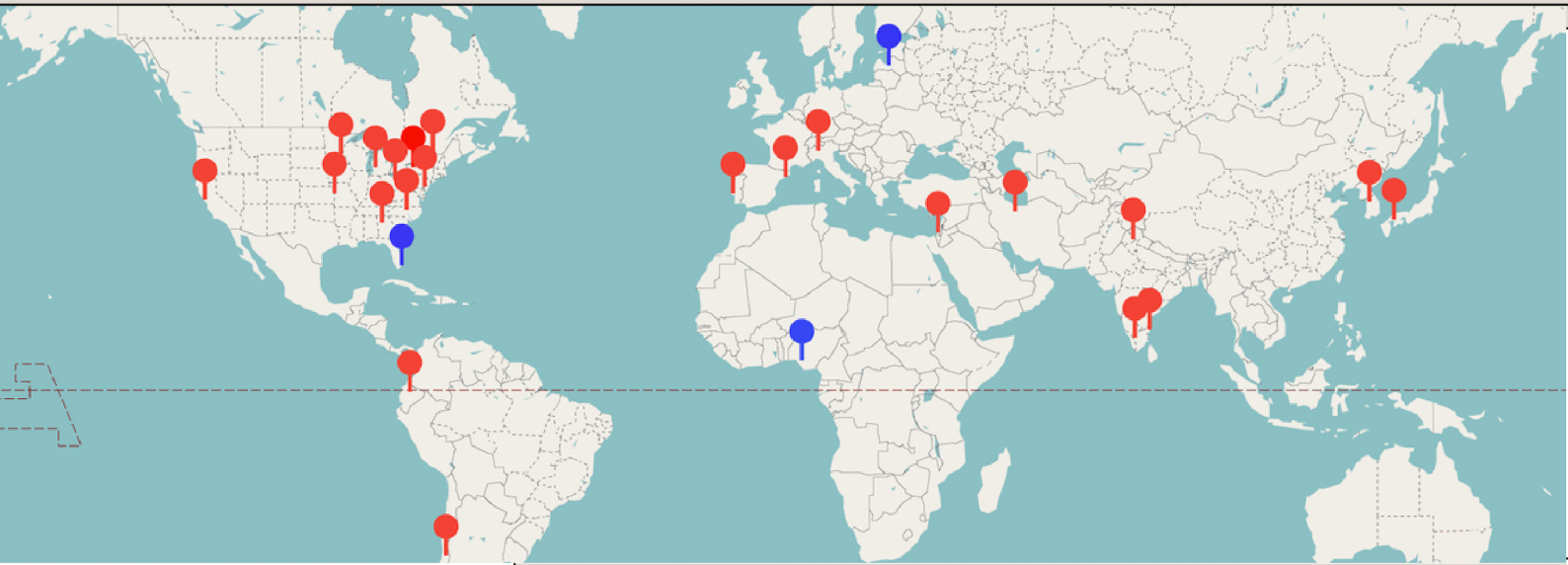
2024 |

ROBISON HARLEY CGRN
INTERNATIONAL PEDIATRIC
GLAUCOMA REGISTRY



Realistic Eye by Eugene Filimonov and Roman Lowgin, 2019, ArtStation (Public Domain)





New Sites

Children's Clinical University
Hospital, Latvia



University of Benin, Nigeria



University of Miami, USA



Physician Highlight: Dr. Oseluese Dawodu

University of Benin, Nigeria

I have been practicing as a paediatric ophthalmologist in Nigeria since 2007 after completing a fellowship training at the Hospital for Sick Children in Toronto, Canada.

Nigeria is a very populous country (population of about 230 million) with approximately 42% of the population under the age of 15 years. With the known rate of occurrence of congenital glaucoma (1 in 10,000 live births), this indicates that a large number of children with the various forms of childhood glaucoma exist in our community. My expectation is that my colleagues and I will be able to recruit a decent number of patients in the registry since we have a lot of children with glaucoma under our care.

While I was in training as a fellow at the Hospital for Sick Children, I had the privilege of participating in the management of a child with spontaneous disconnection of a glaucoma shunt tube extender. This case report was published in the Journal of American Academy of Pediatric Ophthalmology and Strabismus JAAPOS 14 (4) in 2010.

I believe that contributing to the Pediatric Glaucoma Registry will not only benefit the medical community but will also make our institution, the University of Benin more visible in international research collaboration.

It is hoped that ultimately, the data we contribute will help to improve understanding of the disease as well as treatment modalities thereby improving the lives of children affected by glaucoma.

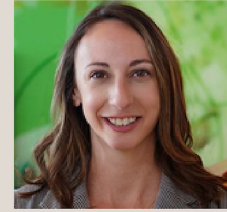
MEET THE BOARD

**THANK YOU!***Alana L. Grajewski*

Thank you to Dr. Alana Grajewski for her dedicated commitment to the Registry since its inception. We wish her luck in her future endeavors!



David Mackey
Lions Eye Institute, Australia



Jenina E. Capasso
University of Rochester, USA



Sharon F. Freedman
Duke Eye Center, USA



Alex V. Levin
University of Rochester, USA



George L. Spaeth
Wills Eye Institute, USA

WELCOME DR. TA CHEN PETER CHANG!

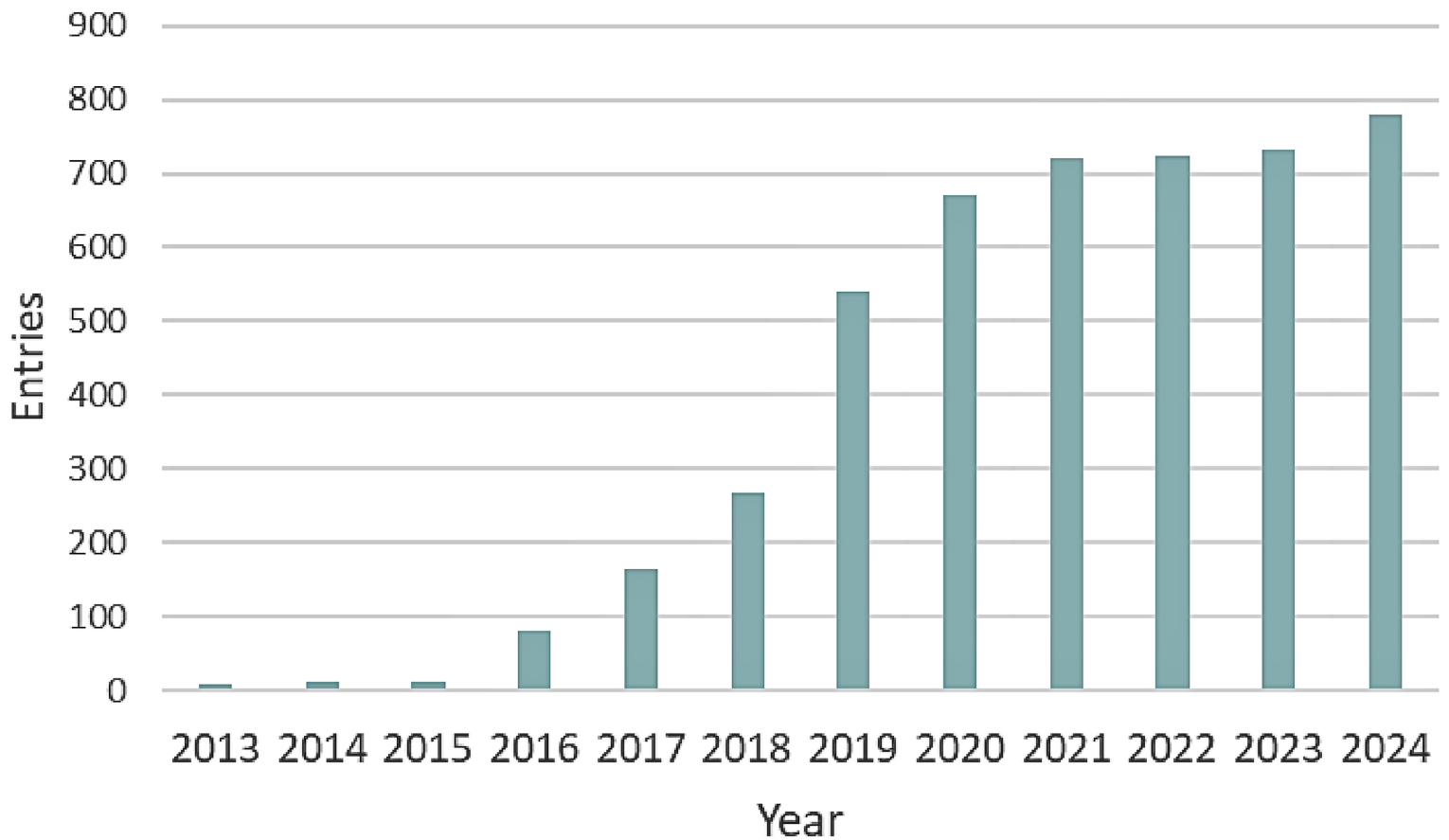
Dr. Chang was born in Kaohsiung, Taiwan. He graduated Magna Cum Laude from Pomona College (Claremont, CA) with a Bachelor of Arts degree in neuroscience and a minor in piano performance. Dr. Chang received his medical degree from the Johns Hopkins University School of Medicine. He completed ophthalmology residency at Stanford University/Byers Eye Institute, where he also served as Chief Resident. This was followed by glaucoma fellowship training at Bascom Palmer Eye Institute, and pediatric ophthalmology and strabismus fellowship training at Vanderbilt University/Vanderbilt Eye Center.

Dr. Chang joined the faculty of Bascom Palmer Eye Institute/University of Miami as an Assistant Professor of Clinical Ophthalmology in 2012 as the first, full-time, dual fellowship trained pediatric glaucoma and anterior segment specialist in the institution's history. He had acquired secondary appointments in the Departments of Pediatrics and Human Genetics, and was promoted to Professor in 2022. Dr. Chang's research is focused on two primary areas: 1) the outcomes of adult-onset and childhood glaucoma surgeries, and 2) the genetic and multiomic studies of congenital anterior segment anomalies. Dr. Chang's research is funded by multiple foundational grants.

Dr. Chang is the recipient of the 2023 American Association of Pediatric Ophthalmology and Strabismus Gunter von Noorden Young Investigator Award, the 2021 Research to Prevent Blindness/American Academy of Ophthalmology Award for IRIS Registry Research, and had authored a first prize essay in the New England Journal of Medicine Physician Essay Contest. He serves as the Ophthalmology Chair to the Sturge Weber Foundation Medical Advisory Board, and is the Director of the Samuel & Ethel Balkan International Pediatric Glaucoma Center as well as the international Childhood Glaucoma Research Network. He is the author of the popular textbook *Clinical Decisions in Glaucoma*, 2nd Edition. An advocate for social justice and diversity, equality and inclusion (DEI), Dr. Chang is the Vice Chair of DEI Committee for the American Association of Pediatric Ophthalmology and Strabismus, with a goal of promoting diversity in the work place through professional organization advocacies.

Dr. Chang lives with his husband Dr. Obdulio Pilot PhD, and their two children in Coral Gables, FL.

DATA ENTRY BY YEAR

**Site Highlight:** *Sankara Nethralaya, India*

We are thrilled to commend Sankara Nethralaya Eye Hospital for their outstanding achievement as the leading data contributor to the Registry so far this year! Their commitment reflects their dedication to advancing research and improving patient care. Congratulations to the team at Sankara Nethralaya!

**JOIN NOW!**

The Registry is an international centralized secure de-identified website database of childhood glaucoma hosted at the University of Rochester, with the intent of fostering research on pediatric glaucoma. Patient data can be entered from anywhere in the world and any site worldwide is welcome to join. There is no charge to join. After entering 10 patients, individual sites have access to the entire registry for their IRB approved research. Researchers retain all authorship on any papers arising from the data. It is a “win-win” for all!

Email: kinza_abbas@urmc.rochester.edu, alex_levin@urmc.rochester.edu