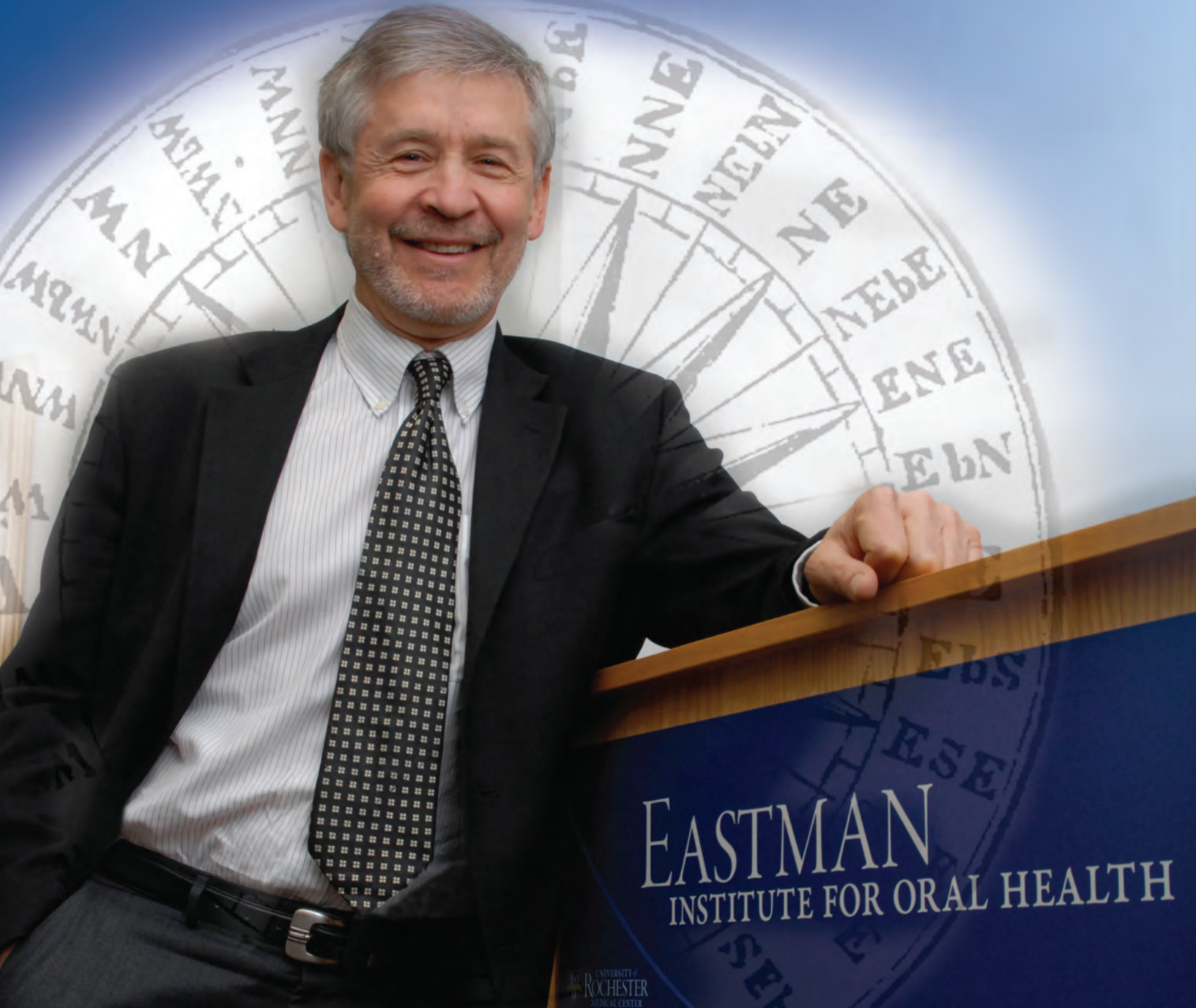


Winter 2012/2013

MOMENTUM



EASTMAN
INSTITUTE FOR ORAL HEALTH

UNIVERSITY OF
ROCHESTER
MEDICAL CENTER

Cyril Meyerowitz Raised the Bar

Story on page 4

EASTMAN

INSTITUTE FOR ORAL HEALTH

Momentum, under the creative hands of our public relations director, Karen Black, has become a wonderful vehicle for sharing news about our great institution. I have enjoyed being a part of it through the director's report. But all good things do come to an end and this is my last report.

I have enjoyed my tenure as director of the Eastman Institute for Oral Health enormously. I have been privileged to serve in a leadership role at the University of Rochester for 21 years, as chair of Dentistry in the School of Medicine and Dentistry and then as director of Eastman Dental Center and the Eastman Institute for Oral Health. When I came to Rochester from South Africa in 1973 as a student, I could not have dreamed that I would end up as director of Eastman, an institution with an illustrious history, well known across the dental world. I would not have been there had it not been for my first research mentors at the University of the Witwatersrand, Hugo Retief and Mervyn Shear.

I have truly stood on the shoulders of giants and am humbled to have followed in the footsteps of the previous illustrious leaders of Eastman and Dentistry at the University of Rochester. I owe an enormous debt to my mentors and friends. They taught me personal and professional lessons, too numerous to describe, but indispensable to my growth and ability to serve as a leader. There have been so many but a few stand out and I would like to acknowledge and thank them: Stanley Handelman, Bejan Iranpour, Martin Curzon, Dominick Zero, John Featherstone, Fred Emmings, Jeffrey Pearlman, Jay Stein, Marshall Lichtman, Bill Bowen, Mike Goonan, Peter Robinson, John Borrelli and Todd Thierer. Thank you. I have been privileged to work with so many outstanding faculty, staff, residents and alumni. You are the backbone of the institution and the reason it will flourish into the future.

I was pleased to have been a part of Betsy Brayer's wonderful book on academic dentistry, *Leading the Way*. I wrote an introduction for the book and would like to share part of it to describe the way I see our institution, its history, and its future (see next page):

On the Cover

Cyril Meyerowitz's leadership has made a lasting impact. Story, page 4.

Photo by Keith Bullis

Contents Winter 2012/2013

8	Q & A with Cyril Meyerowitz	20	International Partners
10	Where are all the Alumni?	22	Prosthodontics Expansion Project
13	Pain Management Program	24-27	Alumni Profiles
14	Resident Profile	32	News & Notes
16	Reunion Pictures		

The history of the Eastman Dental Center and the School of Medicine and Dentistry at the University of Rochester is a complex and interesting story that spans almost 100 years. It is a story of individuals with vision and foresight; a story of community and institution interactions: a story of philanthropy; a story of a successful public health venture; and a story of significant advancements in scientific research and clinical care. It is also a story of lost opportunities and unfulfilled possibilities, of personal conflicts, and of institutional ambiguity, conflict and rivalry.

It is a human story after all. But in a larger sense it is a story of the people and organizations that have led the way to significant accomplishments in twentieth-century oral health. The University of Rochester and the Eastman Dental Center are, and have proven to be, extraordinarily fertile grounds for dental education, clinical care, and research.

The establishment of the Eastman Institute for Oral Health is an important step for Dentistry at the University of Rochester and provides a platform for the institution to make significant contributions in community service, clinical care, education, and research into the future. But I would be remiss if I did not share my conviction that academic dentistry at the University of Rochester would be best served in the future with its evolution into a dental school, either pre-doctoral or post-doctoral. Despite the demise of the feasibility process for the establishment of the school, I don't believe the story is complete without exploring that possibility again in the future.

Right now, dentistry is challenged with forces that threaten its place as a learned profession and innovation in dental education and research are needed. Given our great history and superb University we are part of, what better place than our institution to lead the way!



A handwritten signature in black ink that reads "Cyril Meyerowitz".

Cyril Meyerowitz, DDS, MS
Eastman Institute for Oral Health

“We will be losing a key voice of reason and an amazing academic leader.”

– Peter G. Robinson
chief operating officer and vice president
University of Rochester Medical Center

story on
page 4

Eastman Institute for Oral Health
625 Elmwood Avenue, Box 683
Rochester, New York 14620-2989
www.urmc.rochester.edu/dentistry/

Editor Karen Black
karen_black@urmc.rochester.edu
Art Director Kathleen Mannix
Photography Keith Bullis
U.S. Department of Defense

Momentum is published by the
University of Rochester Medical Center.

Cyril Meyerowitz Raised the Bar

After 15 years of leading the way, Cyril Meyerowitz, DDS, MS, has moved on from his role as director to a different chapter of his career, leaving Eastman Institute for Oral Health more stable and viable than it has ever been.

Meyerowitz is credited not only for a long list of accomplishments, but more importantly, positioning dentistry for continued success within the University of Rochester Medical Center, and surpassing many obstacles to clear the once very bumpy path for the new director.

But until the next director is named, William Calnon, DDS, will serve in that role. No stranger to Eastman Dental and the

UR, Calnon is a 1979 GPR graduate, past president of the American Dental Association, and president of the Eastman Dental Center Foundation Board, Inc.

When the time comes, the new director will have very large shoes to fill, as Meyerowitz's vision and leadership led to Eastman Dental and the University of Rochester Medical Center becoming an international leader in oral health and dental graduate education, research and clinical care.

Many Accomplishments

Patient visits have increased 25 percent during his tenure as director. Service today includes 147,000 visits to children and adults. And, true to its founder and namesake's original mission nearly 100 years ago, Eastman Dental remains the predominant provider and safety net for oral health care to the underserved.

"Under Dr. Meyerowitz's leadership, Eastman Dental expanded its community service programs, dramatically improving access to care by establishing new sites throughout the region and enhancing clinical services," said Bradford C. Berk, MD, PhD, URMCC CEO. "His willingness to think creatively, coupled with his 35+ years of experience in providing compassionate care, cutting edge research, and academic leadership make him a dynamic leader."

Meyerowitz served as professor and chair of Dentistry since 1991 before being named Eastman Dental's fifth director, shortly after Eastman merged with URMCC in 1997.

"Dr. Meyerowitz has raised the bar of commitment and has positioned Eastman Institute for Oral Health well for future



(l to r) G. Robert Witmer, Jr., Peter Robinson, Wayne LeChase, and Michael Goonan wish Cyril well at the farewell reception.

“...there are very few people like Cyril who actually inspire you.”

—Carlo Ercoli, DDS

innovation and excellence,” said Calnon. “Cyril has attracted a faculty which has national and international respect and EIOH proudly ranks in the top five of all dental educational institutions in the U.S. for federal research dollars.”

Meyerowitz’s ability to develop partnerships and positive relationships throughout the University and community has been integral in Eastman Dental’s success.

“Even in these difficult economic times, he moved forward several initiatives that have significantly improved the Institute’s status,” said John Borrelli, former vice president and director of EIOH Finance and Administration. His determination led to a successful Medicaid appeal, where Eastman Dental had not received a rate adjustment since 1994.

Major Clinical Improvements

He remained focused on process improvement by implementing a five-year program to re-engineer the clinical service to broaden the payer mix and enhance



Above: Longtime EDC Foundation Board Member Louis Langie and Meyerowitz share a laugh.

Below: Cyril recalls fond memories as EIOH Director.



customer service. He spearheaded the efforts to re-engineer clinical operations, which resulted in a \$3.9 million state grant to build a first-of-its kind dental urgent care clinic, increase clinical capacity, update technology, and renovate the clinical facilities while focusing on improving customer service.

But it was more than his keen ability to overcome significant obstacles that made him a dynamic leader.

“Cyril has a unique ability to deal with you on a human being level,” explained Carlo Ercoli, chair and program director of EIOH’s Prosthodontics Division. “That is the most important thing...because there are many people who can tell you what to do or what not to do, but there are very few people like Cyril who actually inspire you to do the right things.”



Dean Mark Taubman, MD, emceed Cyril's farewell reception.

Eastman Institute for Oral Health replaced Eastman Dental Center as a University of Rochester Medical Center division in 2009, and is the integrated entity responsible for research, education and clinical care in dentistry at the University.

"The bottom line is Cyril has directed and managed the EIOH, which today employs over 500 people and is a world leader in research and post doctoral education," said Michael C. Goonan, URMC vice president and chief financial officer. "His dedication and commitment to providing these critical services have been unprecedented."

He has worked closely with medical center leadership and community organizations to advance oral health care issues within the community and New York state. He recently served as chair of the Council on Dental Education and Licensure, an American Dental association agency dedicated to promoting high quality and effective processes of dental education, licensure and credentialing in the U.S. He was also elected chair of the New York State Academic Dental Centers.

William Calnon, DDS, paid tribute to Cyril during the annual EDC Foundation Board meeting earlier this year.

His initiative, collaborative and cooperative spirit and dedication have been key to Eastman Dental and the Institute's ability to prosper in the years ahead.

"Cyril is a compassionate leader and someone who listens well; in fact, he's a role model for the kind of leader we want at the medical center," said Peter Robinson, URMC's chief operating officer and vice president. "We will be losing a key voice of reason and an amazing academic leader."

In addition, Meyerowitz initiated a marketing campaign to heighten community awareness, which successfully increased the number of self pay and insurance patients in all dental specialties.

Excellence in Education & Research

Academically, the number of applications increases on average 10 percent each year. Today, close to 1,000 people around the globe apply for about 50 open residency and student positions. Meyerowitz has played an integral role in the recent redesign of the master's program in Dental Science, which will train residents in clinical and translational research and help recruit clinician/scientists as faculty.

During Meyerowitz's tenure, the Eastman Institute for Oral Health consistently ranked in the top 10 in National Institutes of Health's National Institute of Dental and Craniofacial Research funding, and reaching as high as third in recent years. His efforts have focused on strengthening the link between basic, translational research and clinical research.





Cyril is flanked by (l to r) Xiuxin Liu, DMD and Qin Amy Wang, BDS, and YanFang Ren, DDS.

Dr. Meyerowitz has been active in research initiatives related to salivary function and oral health in patients with chronic renal failure, those who have undergone head and neck radiation and cancer chemotherapy, and those with HIV. He is widely published and has served on the American Dental Association's Commission on Dental Accreditation and the American Dental Education Association's Commission on Change and Innovation in Dental Education. He is a Fellow of the Academy of General Dentistry and a Fellow of the American College of Dentists, as well as a frequent speaker at oral health meetings around the world.

Thanks to him, the Eastman Institute for Oral Health has made a very positive difference in Rochester, and is well positioned as one of the premier dental academic institutions in the country to prosper long into the future.

"The next director will find him or herself in a very good spot, taking advantage of the many achievements Cyril has done," added Ercoli.

Bright Future

"Measured by its finances, research grants, teaching accomplishments and clinical services, the Eastman Institute for Oral Health is a far stronger and more comprehensive leader in academic dentistry than when Dr. Meyerowitz became its director some 15 years ago," said G. Robert Witmer, Jr., Eastman Dental Center Foundation Board member for 35 years. "In large measure because of Dr. Meyerowitz, the Eastman Institute for Oral Health is today capable of providing the national leadership in academic dentistry that was the vision of George Eastman."

"Cyril is focused, intense, dedicated, and has a very good sense of humor."

—Bill Richardson, EDC Board Member, 15 years

"He does an excellent job of bringing people together and getting the job done."

—Holly Barone, EIOH Chief Administrative Officer

"He's tackled a lot of things a lot of people wouldn't."

—Lou Langie, EDC Board Member, 34 years

Q&A with Cyril Meyerowitz

You have accomplished a great deal during your time as director. Is there anything in particular you are most proud of?

There are many things I'm proud of:

- having shepherded the institution through the early part of the merger. It was a major issue, and a very important event for Eastman to be part of the university.
- during difficult economic times, we were able to not only maintain, but extend services to the underserved and our outreach to the community.
- the dramatic changes we made during the clinical re-engineering initiative and becoming more customer focused and patient friendly.
- enhancing our educational programs by increasing the quality and number of applicants of the programs, re-invigorating the master's program, and enhancing and increasing our international relationships. We've also recruited many outstanding

international professionals.

- we've maintained our strong research funding.
- we developed a great administrative staff, outstanding middle management, we've improved our outreach to alumni, and the development and public relations efforts have improved significantly, as well.
- I'm very proud that we both enhanced and expanded the function of the EDC Foundation Board in an incredibly positive way. We created a much more prominent role for the EDC Foundation for strategic planning.
- about our role helping the developmentally disabled community.

What will you miss the most?

Interacting with some very interesting, bright, creative people on important issues in clinical care, research and education. I'll dearly miss the close mentorship I've had with junior faculty. I really enjoy helping people find their way.

What will you miss the least?

I won't miss the multiple number of meetings!

Bad habit you'd like to break?

I'm a little disorganized.....

Your favorite technology?

Pandora...I LOVE music!

Describe your personality.

Introspective and self aware. I don't take myself terribly seriously, but consider myself engaged, passionate, creative, and socially gregarious.

The one thing you'd like to do and never have?

Visit Central Africa and the Greek Islands, especially Crete, and climb Mt. Kilimanjaro.

Any words of wisdom you live by?

I believe the first step to understanding how other people or institutions work and what motivates them is to first understand yourself.



What books have you enjoyed reading recently?

- *Why Does the World Exist* by Jim Holt – an Existential Detective Story
- *Tess of the D'urbervilles* – by Thomas Hardy
- *Books of Meditations* by Marcus Aurelius
- *Thinking, Fast and Slow* by Daniel Kahneman
- *The Sense of an Ending* by Julian Barnes
- *The Art of Fielding* by Chad Hardbach
- *Time of Gifts* – by Patrick Leigh Fermor



The one talent you wish you had?

I wish I was a great cello player!



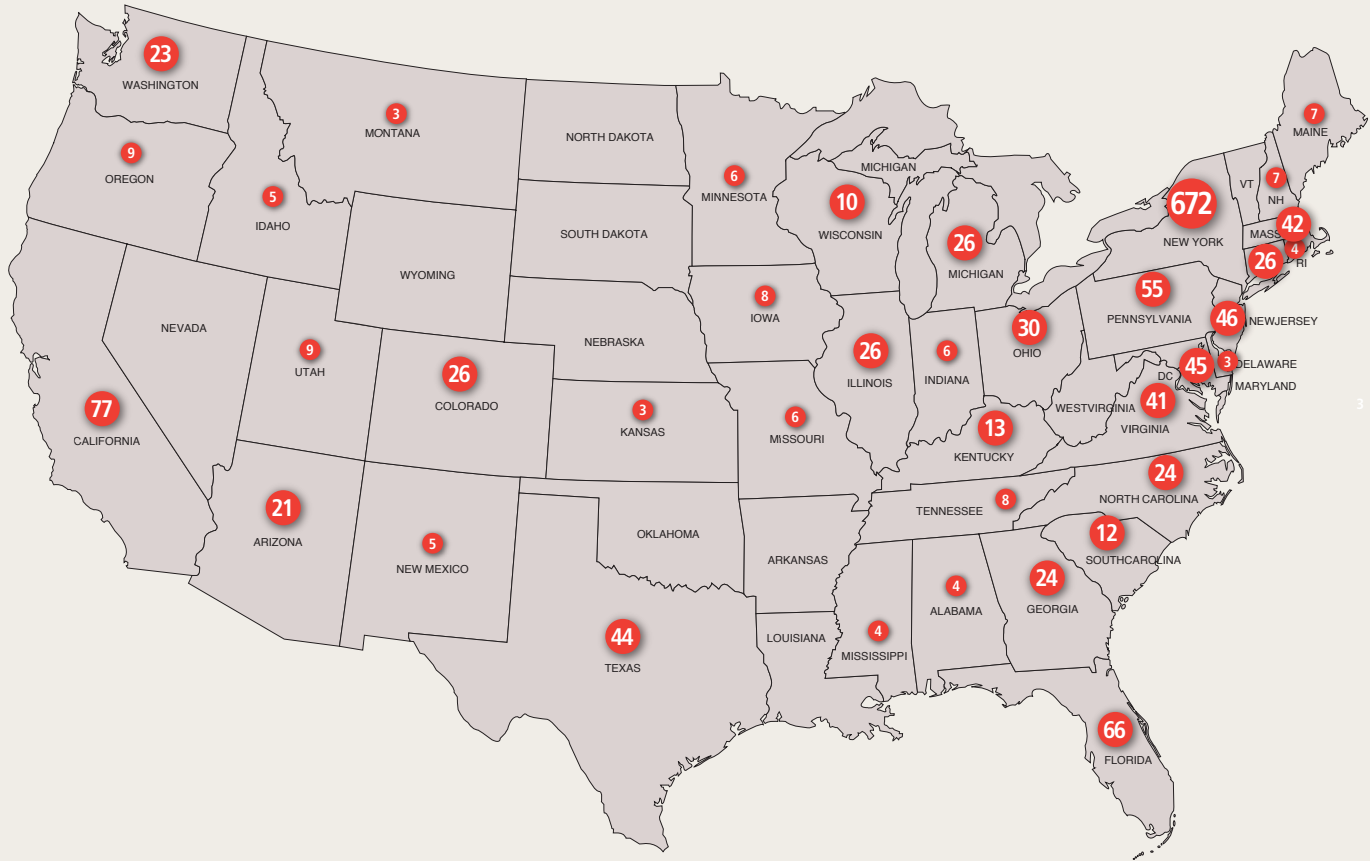
Favorite quotes?

The following quotes are both written by David Brooks, from *The Social Animal*.

- “The conscious mind writes the autobiography of our species. Unaware of what is going on deep down inside, the conscious mind assigns itself the starring role. It gives itself credit for performing all sorts of tasks it doesn’t really control. It creates views of the world that highlight those elements it can understand and ignores the rest.”
- “The human face is not impressive because towering geniuses produce individual masterpieces. The human race is impressive because groups of people create mental scaffolds that guide future thought. No individual could build a model airplane, but modern companies contain the institutional knowledge that allows groups to design and build them.”

EIOH Alumni Around the World

We all know that EIOH alumni come from almost every country in the world. But where are they living and working now? The top three locations are New York, Canada and California. These maps offer additional insight.



Australia - 9 • Brazil - 6 • Canada - 116 • Colombia - 3 • Costa Rica - 5 • Denmark - 5 • France - 4 • Germany - 5 • Greece - 21 • Guatemala - 6 • Hong Kong - 3 • Ireland - 4 • Israel - 6 • Italy - 5 • Japan - 6 • Mexico - 16 • Netherlands - 4 • New Zealand - 6 • Norway - 3 • Peru - 3 • Saudi Arabia - 4 • South Korea - 5 • Spain - 3 • Sweden - 4 • Switzerland - 7 • Taiwan - 5 • United Kingdom - 13

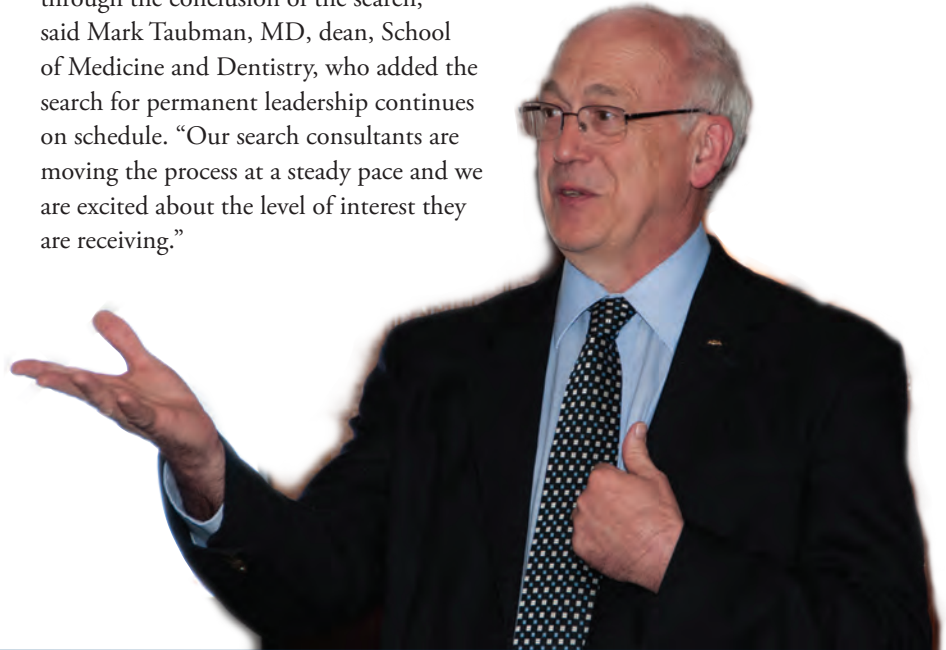
Dr. Bill Calnon Named Acting EIOH Director

William R. Calnon, DDS, (GPR '79) is serving as acting director of Eastman Institute for Oral Health and acting chair of the Department of Dentistry, until a new director is named.

Calnon is the president of the Eastman Dental Center Foundation Board, past president of the American Dental Association, and a private practitioner in Spencerport. A part-time professor of Dentistry at the School of Medicine and Dentistry, Calnon is a graduate of SUNY at Buffalo School of Dental Medicine and completed his residency at Strong Memorial Hospital. He has previously served as president of the Monroe County Dental Society, the Seventh District Dental Society, and the New York State Dental Association in addition to participation in numerous committees and task forces in

dental professional organizations at virtually every level.

"We're delighted to have Bill lead us through the conclusion of the search," said Mark Taubman, MD, dean, School of Medicine and Dentistry, who added the search for permanent leadership continues on schedule. "Our search consultants are moving the process at a steady pace and we are excited about the level of interest they are receiving."



Win-Win Strategy: Gift Annuities in Retirement Planning

“When we heard about the Handelman Fund, established to honor Dr. Stanley Handelman with whom Neil studied in a residency at Eastman Dental Center, we knew that we wanted to participate.

Establishing a series of deferred charitable gift annuities was the right plan for us at this time in our lives. We fund the annuities while in peak earning years, receive a charitable deduction the year in which we make the gift, and are guaranteed a generous rate of annual payment when the deferral period ends. The rate will never change through the rest of our lives and the income will be a nice complement to other income sources in our retirement years.

“It is our pleasure to honor Dr. Handelman and the other faculty members at Eastman Dental Center who helped me during my General Practice Residency,” Neil said. “This was an outstanding year and I truly appreciate the consideration and education I received. I hope my gift will help the program continue in its outstanding tradition.”

– Neil and Nancy Hollyfield



Neil and Nancy
Hollyfield

For information on gift annuities and other planned giving methods, contact the Office of Trusts and Estates at 800-635-4672 or 585-275-7547. Email Kreckel@alumni.rochester.edu or visit www.rochester.giftplans.org



UNIVERSITY of
ROCHESTER
MEDICAL CENTER

The
MELIORA
CHALLENGE

EIOH Alumni Can Help Transform Dentistry

EIOH alumni and other dentists across the nation have an opportunity to be a part of transforming oral health and clinical practice throughout the United States.

EIOH has a significant role in the newly formed National Dental Practice-Based Research Network established by a seven-year, \$67 million grant awarded to the University of Alabama at Birmingham School of Dentistry from the National Institute of Dental and Craniofacial Research,

The goals of the NDPBRN are to conduct national oral health studies on topics of importance to practitioners and their patients, to provide evidence to improve routine dental care, and to facilitate movement of the latest evidence into routine clinical practice. A key objective is to conduct studies that will improve the knowledge base for clinical decision-making.

The Network is divided into six regional research centers, and Eastman Institute for Oral Health will coordinate the Northeast region, comprised of Connecticut, Delaware, Maine, Maryland, Massachusetts, New Hampshire,



Eastman Institute for Oral Health will coordinate the Northeast region.

U.S. VIRGIN ISLANDS
PUERTO RICO

New Jersey, New York, Pennsylvania, Rhode Island, Vermont, U.S. Virgin Islands and Puerto Rico.

“This project is a unique union of real-world practicing dentists and academic scientists working together to quickly transfer new knowledge gained in research to benefit the patient,” explained Cyril Meyerowitz, DDS, the Northeast region’s principal investigator. “Dentists can

participate in discovering the answers to questions they get in their practices, which can then translate quickly into practice. Our vision is that all dental professionals, organizations, and patients will help make this network the precious national resource that it can be.”

Dentists can choose their level of involvement:

- 1 receive information only about the network and attend conferences
- 2 participate in survey studies that involve filling out questionnaires only
- 3 participate in full clinical studies

The benefits of participating are numerous:

- Participate in research projects that benefit your practice
- Suggest topics to be addressed (visit NationalDentalPBRN.org)
- Distinguish your practice from practices, acting as a practice promoter or practice builder
- Increase your practice's visibility and stature among dental patients
- Enhance communication with patients by showing that you and your office care about the scientific basis of daily clinical practice
- Serves as a team builder, and engage the entire staff in the excitement of discovery and quality improvement
- Receive financial remuneration for the time spent doing research
- Potential to present at local, state, and national dental meetings and research conferences
- Receive continuing education credit for attendance at NDPBRN annual meetings and participate in training and certification activities for specific NDPBRN studies.

This is the first dental practice-based research network on a national scope. Previous regional dental practice based research networks have addressed topics such as persistent pain and root canal therapy, blood glucose testing in dental practices, comparing repaired and/or replaced dental restorations, osteonecrosis of the jaw, and issues related to diagnosing and treating cavities, among many others.

Oral health practitioners, including dentists and hygienists in the northeast region area are encouraged to enroll and participate in the various studies. You can enroll online by going to NationalDentalPBRN.org, and following direction from there to complete the enrollment questionnaire. You need to have a functioning email address to enroll.

For more information, contact EIOH Research Administrator Kathy Bohn at Kathy_bohn@urmc.rochester.edu or 585-273-5272.

New Program Available in Pain Management



A new residency program, Pain Management, has been established at EIOH, and is one of four accredited Orofacial programs in the U.S. With one to two residents per year, the two-year program is GME supported.

“In the United States, orofacial pain affects about 6-7 percent of the population,” said Ross Tallents, DDS, program director, TMJ Fellowship and Pain Management, “The ADA has recognized that there is a need for post graduate education in orofacial education.

The goals are to provide education in orofacial pain at a level beyond pre-doctoral education relating to the basic mechanisms and the anatomic, physiologic, neurologic,

vascular, behavioral, and psychosocial aspects of orofacial pain.

Education in these programs is based on the concept that oral health is an integral and interactive part of total health. The programs are designed to expand the scope and depth of the graduates' knowledge and skills to enable them to provide care for individuals with orofacial pain. For more information, visit <http://www.urmc.rochester.edu/dentistry/education/>



Bhumija Gupta, DDS

The biggest challenge you've overcome and how you did it?

My biggest challenge during my first 18 months of residency was to balance my hectic work life and also take care of my kids since my husband was still living in Canada for work. I strongly believe in prayers and that helped me through the challenging period.

The one talent you wish you had?

I wish I could read people's mind...lol

Favorite thing to do in Rochester?

Summertime picnics with all the amazing friends I have made and going with families to the beautiful parks around Rochester.

Biggest pet peeve?

Poor customer service...I always want to treat others the way I like to be treated. Customer service is the most important thing to me and I feel in this world no one has the time to give you a second chance. So I believe it's important to do your best and keep the high quality work which will keep you ahead, unique and give the edge over others.

Bhumija Gupta, DDS, went to dental school at Manipal University in her native India. She finished the AEGD program in June and is now a GPR resident.

Why did you choose Eastman Dental?

I wanted a program that had a strong clinical component and a balanced didactic program, and figured Eastman would be best for the experience I was looking to get. I want to stay in Rochester, so GPR will help me get a license and also more experience and added confidence.

Some of Dr. Gupta's patients share their stories

Mother and Daughter Get New Smiles before Family Wedding

Cynthia Amarosa, whose daughter was getting married soon, has always felt self-conscious talking to strangers. She was dreading having her picture taken for the wedding.

"I worried about how people perceived me because I had bad teeth," she said. But then the Utica, New York resident saw Eastman Dental in the newspaper, and learned more about the services available from the web.

"I had five implants placed, teeth whitening and six veneers," Amarosa said, "and I was able to afford all of this work by coming to Eastman Dental."

In fact, her daughter Samantha, the bride's sister, decided to have her six front teeth done also before the wedding.

"A smile is the first thing people notice, and I've always been very self-conscious about mine," explained

This is the first of an ongoing feature to profile EIOH residents. Please contact Karen Black at karen_black@urmc.rochester.edu if you or know someone who could be featured.



the 23-year-old teacher's aide. Samantha, who said her teeth were crooked and had an undesirable space, would quickly close her mouth if she thought people were looking at her.

"I was really nervous, but Dr. Gupta made me feel right at home, always joking with me," Samantha added. Samantha had her teeth reshaped, and porcelain veneers on six teeth.



"All my friends and family say, oh my gosh, they look amazing!" Samantha said with a wide smile. "If it wasn't a 2-hour drive, we would make Eastman Dental our regular dentists...everyone is extremely friendly."

"I can't say enough about the quality of work done," Cynthia Amarosa added. The staff is professional, courteous and caring and the pride they take in their work shows."

"I was so happy that day just to be able to stand with my daughter and not be embarrassed to smile," she said. "It really has been a life altering experience and I couldn't be happier," Cynthia said.

Big Baby No More

This 6' 2" 230-lb fitness instructor and martial arts buff says he's nothing but a big baby when he sits in a dentist's chair. Dennis Smith had been looking for a new dentist for awhile. "My phobia of dentists is so intense, I was ready to give up and just let my teeth fall out one by one," he said.

“She made sure I was safe, relaxed and pain free.”

—Dennis Smith



But he finally decided to try Eastman Dental because the office hours matched his crazy work schedule.

Turns out when his new dentist introduced herself, he recognized her from his fitness class, and he relaxed a little.

"I was still really nervous, but after just a few minutes of checking my teeth and listening to my fears, Dr. Gupta and I came up with a plan," he described. "I felt like I had a part in the process, and together we proceeded to put an extensive treatment plan together.

"I was scared to death as she began the extractions, anticipating the ensuing pain. But Dr. Gupta was extremely patient, skillful and confident. She assured me she was not going to hurt me, and went on to prove it! She made sure I was safe, relaxed, and pain free. Coming to Eastman Dental was the best decision ever!"

Celebration and Recognition at the EIOH Reunion



Neil (GenDen '78) and Nancy Hollyfield received the prestigious Eastman Institute for Oral Health Director's Award, recognizing extraordinary service, philanthropy and leadership to the Institute.



Frederick Haring

The following alumni who attended the reunion were acknowledged for their 50th anniversary since completing their programs with a medallion.

- Frederick N. Haring, DDS (Ortho '61)
- Jack W. Howitt, AB, DDS (Pedo '62)
- Leonard Fishman, DDS (Ortho '61)



Interim Orthodontics Chair J. Daniel Subtelny, DDS, celebrating his 90th birthday during the reunion, enjoyed dancing with Xiomara Restrepo-Jaramillo, DDS (Ortho '12)



Ayodeji Idowu, DDS (Prosthodontics '82) and his wife Bola Idowu.



Mohammed Salahuddin (OMFS '91), DMD, Lisa Lord and Stan Orbach, DDS (OMFS '76)

Congratulations to all other alumni celebrating their 50th, and other milestone years!



(l to r) Gen Den Faculty Ira Kamp, DDS, his friend Gary Schnitzler on drums, and AEGD resident Bernardo Sarmiento, DDS, provided great entertainment.



(l to r) Hector Vesco, DDS (GenDen '81, Ortho '83), with his son and Ortho resident Leopoldo Vesco and daughter-in-law Alejandra Vesco, and Yoshimasa Yamazaki (Gen Den '81)



Alina Savu, DDS (GenDen '11) graciously volunteered for Harvey Levy, DMD, who led a program about managing anxious and special needs patients. AEGD resident Yang Kang assisted.

Eastman is Serious about Ethics

By Michael Yunker, DDS
Chair, Ethics Committee

This Fall marks the beginning of the second year of the Ethics Curriculum at the EIOH. The course is intended to expose the incoming class of residents and students to the complex nature of the subject and the practicality and importance of developing and maintaining high ethical standards. Based on the feedback from the attendees, the course that was presented in 2011 was very successful.

Major emphasis was placed on the concept of “professionalism,” and what separates the dental profession from other occupations. The ethical principles of the American Dental Association were discussed in great detail. The attendees were advised to constantly maintain a professional demeanor by demonstrating competence, integrity, responsibility, respect, service-mindedness, and to keep their knowledge and skills up to date.

Collaboration with other stakeholders, maintaining high standards, associating with other professionals in an effort to keep the interests of the patient as the highest priority were also discussed as ways to maintain the highest standards of professionalism. The residents were encouraged to avoid the pressures of quotas, to refer to specialists using the concept that the specialist is actually an extension of your own office, and to develop the ability to recognize personal strengths and weaknesses.

One of the speakers, William Calnon, DDS, past president of the American Dental Association and president of the Eastman Dental Center Foundation Board, told the attendees to always use the word *Meliora* as a reference point. *Meliora*, or ‘ever better,’ is the University

of Rochester’s motto as a reminder to constantly strive for improvement.

Another area of great interest was the ease of use of the electronic media. Elizabeth Mamo, EIOH’s Bibby Library librarian, discussed the problems of plagiarism, paraphrasing without citing the author, and the use of images without permission or citation as common problems arising from the use of electronic media. She discussed the methods available to detect plagiarism and copyright infringement and the fair use of electronic resources.

This fall’s course will include a presentation by James Burk, DDS. Burk is a longtime participant in the Eastman program. He was a resident in General Dentistry in 1972 and has practiced in the Rochester area for nearly 40 years. He is also very active in the county, district, and state dental societies, specifically in ethics, peer review and insurance matters.

The next series of lectures and discussions will once again stress the importance of ethics in the day-to-day activities of the dentist, whether it applies to a resident, a researcher, faculty, auxiliary personnel, the administrator, or the patient.

As final exam time approached, a question raised multiple times was, “How do you test for ethics?”

We concluded that an exam cannot truly test one’s ethical values, but rather the ability of a person to gather information, digest and evaluate it, and arrive at logical conclusions that reflect the ability to “do the right thing.”

The EIOH Ethics Committee has been required to meet only three times during the past two years to discuss breaches of conduct. This hopefully reflects the high ethical standards of the residents and students at the Eastman Institute for Oral Health and the efforts by their dental schools to promote the importance of the subject.

Our course is designed to build upon those already-learned principles and reinforce the importance of maintaining high ethical standards in one’s personal and professional life.



Reif Joins EIOH as CFO and Barone appointed CAO



Ed Reif



Holly Barone

EIOTH welcomes Ed Reif as its new Chief Financial Officer and Holly Barone as its new Chief Administrative Officer.

Reif previously served as CFO of an 800 employee for-profit Certified Home Healthcare Agency, where his primary responsibility was to develop the capabilities of the accounting, information technology, and clinical support departments, assisting the agency in its expansion strategy. He implemented meaningful real time clinical and financial management reporting to help improve clinical outcomes and to gain operational efficiencies.

“I’m excited to work in an organization with dedicated faculty and staff that promotes and contributes to the health and welfare of patients both locally and nationally,” Reif said.

Most recently, Reif was a manager in the Enterprise Risk Management Division at The Bonadio Group. Before that, he spent five years at KPMG progressing through to senior auditor and serving as in-charge on engagements representing the construction, insurance, and healthcare industries. After leaving KPMG, he spent several years in the private sector, including waste management payroll services, employee staffing, and business associations, serving in a variety of roles.

Reif received his bachelor’s degree in Public Accounting and Business Administration from State University New York at Albany. He is a member of the American Institute of Certified Public Accountants, the New York State Society

of Certified Public Accountants, and the Healthcare Financial Management Association. He has been active in the local community having served on the boards of various community-based organizations.

A registered dental hygienist by training, Holly Barone made the decision in 1996 to move into healthcare management and clinical operations where she could make a larger, positive impact on more people. Promoted several times in her 16-year tenure with EIOH, Barone’s contributions have centered on clinical/operational programs and improvement activities. She was the clinical manager, administrator, and senior operations administrator for Community Dentistry & Oral Disease Prevention and assistant director for Clinical Service Operations for EIOH.

She was recently appointed Chief Administrative Officer, responsible for the Eastman Dental enterprise including its outreach locations, University Dental Faculty Group and Hospital activity, the Department of Dentistry in the School of Medicine and Dentistry, while still maintaining her role as assistant director for Clinical Service Operations.

Barone has directed the clinical re-engineering efforts and contributed to the Institute’s receipt of grant funding from the Greater Rochester Health Foundation and New York State HEAL. She planned and managed the \$5 million renovation and expansion of the Eastman Dental’s Elmwood Ave. and downtown clinics.

Barone earned the 2009 *Rochester Business Journal* Health Care Achievement Award in Management and the 2000 University of Rochester Medical Center Board Excellence Award.

Advancement Changes



Carol Vanini, acting director of EIOH advancement

Carol Vanini has been named acting director of EIOH Advancement and Alumni Relations. Becky Herman, the previous director of EIOH Advancement and Alumni relations, has resigned to work as the director of development and alumni relations at Lutheran Medical Center's Dental Medicine Department based in Brooklyn, NY. She will be working mainly from her Rochester, NY office, and traveling as needed.

"Becky has always been an enthusiastic, dedicated and highly motivated person who shares alumni's passion about Eastman, and has worked to improve communication with alumni and help bring the Eastman family from around the globe closer together," said Cyril Meyerowitz, DDS, former EIOH director. "She will be deeply missed."

Vanini has extensive experience in alumni relations, event planning, as well

as directing a comprehensive development program including annual giving, major/planned giving, and donor stewardship in the dental program at the University of Buffalo for more than 12 years and most recently at Highland Hospital for the past four years.

Mary Ann King, senior assistant vice president for URMC academic programs, who has worked closely with Herman, will also support our development efforts with Vanini. Over the past five years, EIOH has undergone major changes and made significant strides in all aspects of its education, research and clinical endeavors. *We sincerely thank alumni for their ongoing support during this transition and exciting new chapter of Eastman's history.*

If you have any questions or comments, don't hesitate to contact Carol at call 585-275-2767 or email cvanini@ur.rochester.edu



BE AN EIOH CHAMPION

Join classmates in support of the Eastman Institute for Oral Health

In honor of the first ever dentistry Reunion Weekend in Rochester, which took place October 11-13, 2012, we invite you to be part of the EIOH Reunion Giving Campaign! It's not too late to compete with fellow alumni in your graduation year decade (e.g. 1960's, 70's, 80's, etc.) for the highest giving participation and most multi-year pledges. Give what you can—every gift counts. Your participation in a little friendly competition will have a BIG impact on current residents and students—a win for everyone!

Join the Reunion Giving Campaign by making a gift today at <http://dentistry.urmc.edu/reunion/campaign>. Your generosity helps provide critical resources, training opportunities, enhanced clinical programs, and upgraded technology.

Annual Giving Programs | University of Rochester | 800.598.1330 | annualfunds@rochester.edu

Update: Partnership with Peking University

Led and facilitated by YanFang Ren, DDS, PhD, the partnership between EIOH and China's Peking University School of Stomatology has been very productive, with both partners visiting each other's facilities and gaining valuable knowledge about research and clinical care.

OMFS Chair Jay Fantuzzo, DDS, MD, recently returned from a visit there with other EIOH faculty.

"It was a fascinating trip," he said. "The work the Chinese are doing at Peking University Hospital of Stomatology is impressive. They perform 4,600 inpatient oral and maxillofacial surgeries per year just limited to cleft, craniofacial, orthognathic, tumor and reconstructive surgery, TMJ and facial trauma alone – not including office proce-

dures, sedation, dentoalveolar surgery and dental implants! They use navigational surgery, have a 3D camera and a surgical robot all for oral and maxillofacial surgery."

Fantuzzo said his hosts were very hospitable and made arrangements for him and his wife and daughter to see the Great Wall, Forbidden City, the Hutong, Confucious Temple, and Silk and Pearl Market.

"We all loved the food and especially the Chinese people!"

Faculty and post graduate students from PKUSS have been to EIOH, learning more about the AEGD program and sharing in research projects with Ren.

"The Chair of the Oral & Maxillofacial Surgery Department at the Peking University is coming this Fall," Fantuzzo added.



"We hope to send two residents each year at separate times, for one month each, most likely to start Spring of 2013."



Dr. Walter Li, Joel Seligman, Dr. Cyril Meyerowitz, and Dr. Ryan Li

In Hong Kong, Dr. Walter Li (Ortho '79, MS '80) and Dr. Ryan Li (Pedo '81) hosted University of Rochester President Joel Seligman, Dr. Cyril Meyerowitz (GenDen'75, MS '80), EIOH Chief of Howitt Urgent Dental Care Dr. YanFang Ren (GenDen '98, TMJ '99, MPH '06), University of Rochester Trustee Evans Lam (BA '83 MBA '84) and other University of Rochester alumni, parents and faculty members for dinner in May. Thirty people attended the dinner which concluded with remarks from President Seligman about the state of the university today and the university's growing relationships with people and institutions in Hong Kong and China more generally.



Back row, left to right: Eugene Zhang, (BA '91, BS '91, MS '93), Elizabeth Chen, (BA '94), Dr. YanFang Ren, Evans Lam, (BA '83 MBA '84), Dennis Lu, (MBA '04), Jaijit Kumar (MBA '00), Leo Wah, (BA '93).

Front row, left to right: Dr. Joseph Lee (FLW '68, PHD '70), Dr. Ching Tang, President Joel Seligman, Dr. Yoshimasa Yamazaki, (GenDen '81).

Graser Fellow Named

Luiz Boza, DDS, (Prosthodontics '12) was named the seventh Gerald N. Graser Fellow. The Fellowship is a one-year program awarded to those interested in pursuing a full- or part-time dental academic or career in prosthodontics. The Fellow focuses his/her training on the surgical aspects of implant dentistry and on learning new teaching methodologies.

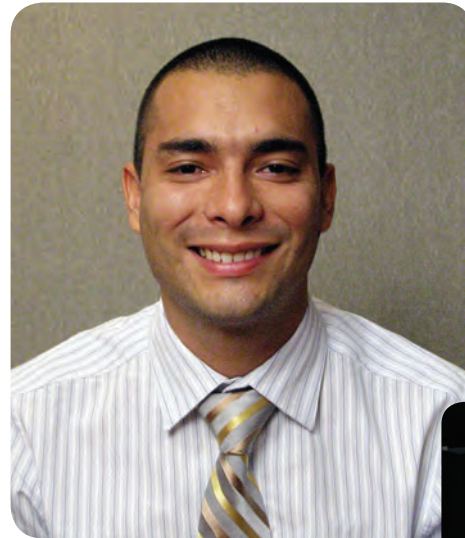
Established in 2003 to address the serious shortages of dental school faculty, the Graser Fellowship aims to encourage young qualified dentists to consider academics by helping them develop new skills in educational research, curriculum innovation, to learn various educational theories, and explore new teaching methods.

“State support for dental education continues to decline, nearly half of existing dental faculty members are older than age 50, and there are about 400 vacant faculty positions in the United States,” said Carlo Ercoli, DDS, chair and program director for EIOH Prosthodontics Division. “We want to do what we can to help meet the challenges academic dentistry is facing.”

Mario Rotello, DDS (Prosthodontics '11), a previous Graser Fellow, said the extensive training he received, especially with surgical

procedures and more specifically extractions, socket preservations, bone augmentation with and without the use of membranes, implant placement, minor soft tissue augmentation, was very beneficial.

“In addition, you are required to super-



Dr. Ercoli was excellent, and I really enjoyed the deep interaction with the Periodontics Division, as well.”

The Fellowship is named to honor Gerald N. Graser, DDS, MS (Prosthodontics '72, MS '75), who is in his 37th year of service at Eastman Institute for Oral Health. He began his residency in 1970 at Eastman Dental Center and became a faculty member in 1975. He served as chair of the division from 1977 to 2006 and he continues to teach part time.

At left: Luiz Boza, DDS

Below: Mario Rotello, DDS (center) with Carla Boff and Carlo Ercoli, DDS

visit the clinic for the prosthodontic residents during the fellowship,” added Rotello, who is currently in private practice.

“This definitely develops your teaching skills. The mentoring I received from



URMC Dental Faculty Group
Oral & Maxillofacial Surgery



The University Dental Faculty Group recently expanded, opening a new office in the same building at the Clinton Crossings facility. Oral and Maxillofacial surgeons Drs. Jay Fantuzzo and Lee Pollan are practicing in a newly remodeled, state-of-the-art suite with a dedicated staff including full-time registered nursing. The site meets Joint Commission accreditation standards and is fully staffed and equipped for office anesthesia and surgery. The office space is shared by Pediatric Dentistry, Orthodontics, Hygiene, and General Dentistry.



Expansion and Renovations Ahead for Prosthodontics

Hammers will be flying come springtime on the second floor of the Eastman Dental building.

That's when a \$1.3 million expansion and floor-to-ceiling renovation project will begin, adding two treatment rooms, new and larger sterilization area, a technology area for CAD/CAM equipment, a Cone Beam Computerized Tomography machine, and new office space for the Prosthodontics Division, in addition to a complete renovation and optimization of the existing space and equipment.

“Expanding and renovating our clinic, and adding the necessary new technology will allow us to continue teaching our residents at the highest level and maintain our program as one of the very best in the

country,” said Carlo Ercoli, DDS, chair and program director. “In the past few years, the number of applications to our program has doubled and we need to make sure that we continue to attract the best students to our program. Therefore, this expansion and renovation project is a win-win for everyone—our students, our faculty and our patients.”

A fundraising effort was launched to support this project during the Allen A. Brewer dinner in June. The fundraising campaign will include alumni, friends of the Prosthodontic program as well as corporate leaders in the dental industry. However, the renovation would not be possible without the generous lead donors (see photo) who together have already raised \$500,000 toward this project.





An Interview with Dr. Izchak Barzilay

Dr. Barzilay received his prosthodontic training at Eastman Dental Center and his master's degree from the University of Rochester School of Medicine and Dentistry. He is in private practice in prosthodontics and implant dentistry in Toronto, Canada, is an assistant professor at the University of Toronto and an adjunct assistant professor in the department of dentistry for the Eastman Institute for Oral Health. Izchak has recently accepted the position as chair of the EIOH Campaign, serving as a member of the University's Campaign Cabinet.



Why did you agree to serve as chair of the EIOH Campaign?

Giving back is important. Eastman has allowed me to be able to do what I needed to do to be successful. I want to be able to give back for all the good things that Eastman has given me.

What do you hope to gain from this experience?

I want to be in touch with more alumni and be able to pass on my passion for Eastman. I also look forward to meeting many

different people, highly regarded individuals who I'm not exposed to practicing dentistry. Lastly, I hope to have a lot of fun and simply enjoy the journey.

You have directed your contribution to support the Prosthodontic Clinic Renovation Project. Why is this effort important to you?

This is the biggest initiative we have taken on as an alumni group. The benefits to future graduates and current residents cannot be described. Support will provide for a facility with the latest, most progressive equipment and treatment concepts to allow our students to thrive. The Prosthodontic Division already provides its residents with personal attention and care that allows them to graduate ahead of the pack. A new facility will make it even better.

How will your role impact EIOH overall?

From my perspective, the University as a whole needs to know more about us (EIOH), who we are and what we do. Dentistry is an integral part of general health. I hope to make more people aware of who we are and how valuable we are in the community and the world. Without the mouth as an organ, nothing works.



Lead donors: Drs. J. Antonio Bello (Prosthodontics '84), Evangelos Rossopoulos (General Dentistry '82, Prosthodontics '84), Izchak Barzilay (Prosthodontics '86, MS '91), Carlo Ercoli (Prosthodontics '96, TMJ '97, General Dentistry '99, Periodontics '12), Mariane Bafile (General Dentistry '85, Prosthodontics '87) and Gerald Graser (Prosthodontics '72, MS '75).





Stephen E. Feinberg, DDS, MS, PhD (MS '81, OMFS '81)

**Professor and Associate Chair of Research
Oral & Maxillofacial Surgery
University of Michigan Health System**

Feinberg, whose UR mentor – Dr. Bejan Iranpour – has been a very important person in his life, has become internationally recognized for his contributions to temporomandibular joint surgery and reconstruction, and to the use of tissue engineering/regenerative medicine approach to soft and hard tissue reconstruction of the craniomaxillofacial region. Today, he is working on four major grants, one of which is to make a set of human lips that are functional, for soldiers who have suffered major injuries in combat.



Dr. Stephen E. Feinberg

What are the Department of Defense grants you're working on?

- \$1.5 million Phase I-II large defects clinical trial reconstructing free fibular mandibular grafts with tissue engineered human oral mucosa (vestibuloplasties)
- A \$3 million Phase IIA clinical trial to increase keratinized oral mucosa for implant placement utilizing tissue engineered human oral mucosa
- A \$77,000 grant to develop an animal model for fabrication of a set of human lips utilizing microvascular prelaminate muscle flaps that have had tissue engineered muco-cutaneous grafts placed on the muscle. This approach will allow us to fabricate autogenous composite tissue grafts composed of epithelium, dermis and muscle.
- We also have an NIH grant to develop the technology to non-invasively assess manufactured tissue engineered device during the fabrication process and after their implantation into the body.

How did you get involved in working with the military on this important project?

I met Colonel Robert Hale, U.S. Army oral and maxillofacial surgeon at a surgical conference, who shared the military/DoD's strong interest in translational research (bench to bedside). Colonel Hale is the liaison in craniomaxillofacial (CMF) tissue engineering/regenerative medicine (TE/RM) for AFIRM. He is also director of craniomaxillofacial research at the Institute of Surgical Research (ISR) at Fort Sam Houston, San Antonio Texas. Colonel Hale was instrumental in suggesting that I apply for grants to further advance our technology in soft tissue TE/RM of the CMF region.

Describe your approach, why it's unique, and why it'll work better than previous attempts at reconstructing lips and other parts of the body.

We are probably the world leaders in the development and utilization of tissue-engineered oral mucosa and we have already performed a successful FDA-approved Phase I clinical trial.

continued on page 26



“The training at Rochester gave me the foundation and credibility to achieve what most people said was not possible, to become a surgeon-scientist.”

— Stephen E. Feinberg, DDS, MS, PhD (MS '81, OMFS '81)



continued from page 25

We are also one of the first groups to fabricate a muco-cutaneous (M/C) construct (skin-vermillion border-oral mucosa) on the same dermal base. This is important as this will be the initial phase in development of tissue requiring this type of epithelium (lips, eyelids, nose, urogenital tract)

Previous attempts have had inadequate outcomes. But we will use a novel approach in making human lips by combining an *in vitro* fabrication of the M/C constructs and implanting them on a muscle bed in the back so as to develop a blood supply and innervation based on that muscle bed. In essence, we will be utilizing the person's own body as an *in vivo* bioreactor. We will be using tissue biopsies of the individual's own skin and oral mucosa thereby making a composite tissue (lips), which will not be rejected by the individual. This will obviate the need for immunosuppression therapy.

How/when will this approach be transferred into non-military patients?

We hope to initiate human clinical trials in approximately 4 years if our work proves successful and we receive the necessary

funding. The goal is to take our unique approach in development of M/C constructs and bring it to the clinical arena via our previous clinical trials that are utilizing similar fabrication technology that has already been approved by the FDA.

Describe your spin-off company.

The name of the company is Tissue Regeneration Systems (TRS). We started this company as a way of moving some of our research findings into commercialization. It also allowed us to apply for other funding through the NIH (SBIR and STTR grants) and other investors (Venture Capital and Angel funding) to support our research and commercialization.

Describe your experience at Eastman and UR – how did it/does it influence your career/choices/life?

I was interested in clinical training in a specialty (oral and maxillofacial surgery) and in doing research (obtaining a PhD in a basic science discipline: experimental pathology). I specifically looked for programs that would allow me to achieve

my career goals and, at the same time, give me the necessary funding to do so. I was accepted into the Dental Clinical Teacher Training Program initiated by William McHugh, Assoc. Dean of Dentistry at UR and Director of EDC, in the early 1970's.

My surgery training under the auspices of Dr. Bejan Iranpour, and my PhD thesis committee at the University of Rochester were great role models that supported me both emotionally and financially through my 8 years of additional training. I also realized I was willing to put in the extra time and effort following dental school, an internship, and a Master's program (in Anatomy at the University of Michigan) to obtain the training that I needed to do what I wanted to do the rest of my life. I do not regret this decision.

Early on in my career, in order to establish my clinical credibility, I believed it was essential to be board-certified by the American Board of Oral and Maxillofacial Surgery and build a solid surgical reputation. Once this was achieved, I gradually learned to develop relationships with basic researchers in other disciplines. This was something I learned to do at Rochester: “if the expertise was not at hand, do not be afraid to venture outward to find those that can assist you.” This developed my skills in “team building” which has allowed me to be successful in obtaining NIH and DoD grant funding.

The training at Rochester gave me the foundation and credibility to achieve what most people said was not possible, to become a “surgeon-scientist.” I have always said that the best way to honor your mentors is to be there for the next generation of students and to give to them the same support I received during those difficult years of my training and career development.

Alumna Applies Eastman Mission in Kenya

Two weeks in Kenya changed Gabriela Ganoza-Duron's (AEGD '03, GPR '04, Pedo '06) life. So much so, that she and her husband now share a goal to create a nonprofit organization, where doctors and dentists can help fill the enormous need for care there, as well as other third-world communities.

A native of Peru, Ganoza-Duron was accepted in the AEGD in 2000, and upon completion, decided to continue her education by completing the GPR program, and then the Pediatric Dentistry program, which, she realized when going through the program, was her passion.

While at Eastman, she met her husband Vincent Duron, who at the time was a medical student and very passionate about international medicine. After moving to Rhode Island so he could complete

a residency program at Rhode Island Hospital, Ganoza-Duron began working at the Dimock Center in Roxbury, Mass., a clinic dedicated to the city's underserved population, while also teaching at Tufts, Harvard and Boston Universities.

"I had the great opportunity to visit and work in Kenya, while Vincent did a surgery rotation at Tenwek Hospital for one month," Ganoza-Duron explained. "It was an amazing experience."

Dr. Kuyaya and his assistant Emily are the only dental providers at Tenwek, Ganoza-Duron said, with more than 3,000 patient visits a year.

"On my first day, Dr. Kuyaya received me with a dental trauma, a patient that fell from his motor bike--what a way to start the day!" she recalled. "Over my two weeks there, I also performed fillings, extractions, root canal therapies, abscess drainage, and I

had the chance to see some pathologies." A group of oral surgeons from Sweden come every six months to perform surgeries.

"I also had the chance to visit one of the elementary schools, where I did a little dental education class," Ganoza-Duron added. "Colgate donated toothbrushes and toothpaste. The kids were thrilled. It was such a fulfilling experience that I can't describe."

Ganoza-Duron said that Tenwek Hospital is looking for full or part-time dentists for the next two years, while Dr. Kuyaya gets postgraduate training in South Africa. If interested, please contact him at kuyayas@tenwek.com, or Dr. Mark Freije at medsup@tenwek.com and the the web page is tenwekhospital.org/services/clinical-services/dental



Alumna Gabriela Ganoza-Duron, DDS assisted in the busy dental clinic at Tenwek Hospital in Kenya and passed out donated toothbrushes and paste at an elementary school.



Recent EIOH Publications

A clinical study of edentulous patients rehabilitated according to the “all on four” Immediate function protocol. *International Journal of Oral and Maxillofacial Implants*. Crespi R, Vinci R, Cappare P, Romanos GE, Gherlone E. 2012.

Ascl3 marks adult progenitor cells of the mouse salivary gland. *Stem Cell Research*. Rugel-Stahl A, Elliott, ME and Ovitt, CE, 2012.

Both NKCC1 and anion exchangers contribute to Cl⁻ accumulation in postnatal forebrain neuronal progenitors. *The European Journal of Neuroscience*, Sun L, Yu, Z, Wang,W and Liu, X, 2012.

The branched-chain amino acid aminotransferase encoded by *ilvE* is involved in acid tolerance in *Streptococcus mutans*. *Journal of Bacteriology*, Santiago B, Macgilvray, M, Faustoferri, RC and Quivey, RG, Jr, 2012.

Child's Age at the Time of Traumatic Injury to the Primary Dentition Contributes to the Increased Risk of the Presence of the Developmental Sequelae in the Permanent Dentition. *The Journal of Evidence-based Dental Practice*. Kopycka-Kedziorowski DT, 2012.

Endosseous arteries in the anterior mandible: literature review. *The International Journal of Oral & Maxillofacial Implants*. Romanos GE, Gupta, B and Crespi, R, 2012.

Expression of Ecto-ATPase NTPDase2 in Human Dental Pulp. Liu, X, Yu,L, Wang,Q, Pelletier,J, Fausther,M, Sevigny, J, Malmström, HS, Dirksen,RT and Ren,YF, 2012.

Temperature change during non-contact diode laser irradiation of implant surfaces. *Lasers in Medical Science* Geminiani A, Caton JG, Romanos GE, 2012.

Microcomputed tomographic analysis of bone reaction at insertion of orthodontic mini-implants in sheep *International Journal of Oral and Maxillofacial Implants*. Rebaudi A, Laffi N,

Benedicenti S, Angiero F, Romanos GE. Mutation of the NADH oxidase gene (*nox*) reveals an overlap of the oxygen- and acid-mediated stress responses in *Streptococcus mutans* *Applied and Environmental Microbiology*. Derr AM, Faustoferri RC, Betzenhauser MJ, Gonzalez K, Marquis RE, Quivey RG, Jr, 2012.

Oral mucosa response to laser patterned microcoagulation (LPM) treatment. An animal study. *Lasers in Medical Science*. Romanos GE, Gladkova, ND, Feldchtein, F I, Karabut, MM, Kiseleva, EB, Snopova, LB and Fomina,YV, 2012.

Oral piercing injuries treated in United States emergency departments, 2002-2008. *Pediatric Dentistry*. Gill JB, Karp, JM and Kopycka-Kedziorowski, DT, 2012.

Predisposing and Precipitating Factors in Temporomandibular Disorders. *Seminars in Orthodontics*. Tallents R. H., Stein, S, Macher, D, Katzberg, RW and Murphy,W, 2012.

Pro-apoptotic gene knockdown mediated by nanocomplexed siRNA reduces radiation damage in primary salivary gland cultures. *Journal of Cellular Biochemistry*. Arany S, Xu,Q, Hernady, E, Benoit, DS, Dewhurst, S and Ovitt, CE, 2012.

The antimicrobial effect of Isegran HCl oral solution in patients receiving stomatotoxic chemotherapy: analysis from a multicenter, double-blind, placebo-controlled, randomized, phase III clinical trial. *Journal of Oral Pathology and Medicine*. Elad S, Epstein JB, Raber-Durlacher J, Donnelly P, Strahilevitz J, 2012.

The Effect of Core Material, Veneering Porcelain, and Fabrication Technique on the Biaxial Flexural Strength and Weibull Analysis of Selected Dental Ceramics. *Journal of Prosthodontics*, Lin WS, Ercoli C, Feng C, Morton D, 2012.

The antimicrobial effect of Isegran HCl oral solution in patients receiving stomatotoxic chemotherapy: analysis from a multicenter, double-blind, placebo-controlled, randomized, phase III clinical trial. *Journal of Oral Pathology and Medicine*. Elad S, Epstein, JB, Raber-Durlacher, J, Donnelly, P and Strahilevitz, J, 2012.

Application of evidence-based dentistry: from research to clinical periodontal practice. *Periodontology 2000*. Kwok V, Caton, JG, Polson, AM and Hunter, PG, 2012.

Applications of a Newly Developed Sonic Surgical Handpiece in Implant Dentistry. *Clinical Advances in Periodontics*. Schmidt Erich C., Papadimitriou, Dimitrios E V, Caton, Jack G. and Romanos, Georgios E, 2012.

Cardiolipin biosynthesis in *Streptococcus mutans* is regulated in response to external pH. *Microbiology*, Macgilvray, ME, Lapek, JD, Friedman, AE and Quivey, RG, 2012.

Cow milk and caries. *Journal of the American Dental Association*, Bowen WH, 2012.

Dentin tubule occlusion and erosion protection effects of dentifrice containing bioadhesive PVM/MA copolymers. *Clinical Oral Investigations*, Wang Q, Kang,Y, Barnes,V, Devizio, W, Kashi, A and Ren, YF, 2012.

Distribution of endosseous bony canals in the mandibular symphysis as detected with cone beam computed tomography. *International Journal of Oral and Maxillofacial Implants*. Romanos GE, Gupta, B, Davids, R, Damouras, M and Crespi, R, 2012.

The Effect of Core Material, Veneering Porcelain, and Fabrication Technique on the Biaxial Flexural Strength and Weibull Analysis of Selected Dental Ceramics. *Journal of Prosthodontics*. Lin WS, Ercoli,C, Feng,C and Morton, D, 2012.

The Exopolysaccharide Matrix Modulates the Interaction between 3D Architecture and Virulence of a Mixed-Species Oral Biofilm. *PLOS Pathogens*. Xiao Jin, Klein, Marlise I, Falsetta, Megan L, Lu, Bingwen, Delahunty, Claire M, Yates, John R, I,II, Heydorn, Arne, and Koo, Hyun, 2012.

Immediate provisionalization of dental implants placed in fresh extraction sockets using a flapless technique. *International Journal of Periodontics and Restorative Dentistry*. Crespi R, Cappare, P, Gherlone, E and Romanos, G, 2012.

In Vitro Assessment of Primary Stability of Straumann(R) Implant Designs. *Clinical Implant Dentistry and Related Research*. Romanos GE, Ciornei, G, Jucan, A, Malmström, H and Gupta, B, 2012.

Oral rehabilitation of a patient with bruxism and cluster implant failures in the edentulous maxilla: A clinical report. *Journal of Prosthetic Dentistry*. Lin Wei-Shao, Ercoli, Carlo, Lowenguth, Roxanne, Yerke, Lisa M. and Morton, Dean, 2012.

The Presence of the Mandibular Incisive Canal: A Panoramic Radiographic Examination. *Implant Dentistry*, Romanos, GE, Papadimitriou, DE, Royer, K, Stefanova-Stephens, N., Salwan, R, Malmström, H and Caton, JG, 2012.

Raman Microspectroscopy for Species Identification and Mapping within Bacterial Biofilms. *AMB Express*, Beier, BD, Quivey, RG, and Berger, AJ, 2012. A regulatory boost for oral health in nursing homes. *Special Care Dentistry*. Saunders Ralph H. and Zimmer-Presutti, Barbara, 2012.

Role of Clinician's Experience and Implant Design on Implant Stability. An Ex Vivo Study in Artificial Soft Bones. *Clinical Implant Dentistry and Related Research*, Romanos GE, Basha-Hijazi, Gupta, B, Ren,YF and Malmström, H, 2012.

Role of DNA base excision repair in the mutability and virulence of *Streptococcus mutans*. *Molecular Microbiology*, Gonzalez K, Faustoferri, RC and Quivey, RG, Jr, 2012.

Severe defects in absorptive ion transport in distal colons of mice that lack CIC-2 channels. *Gastroenterology*. Catalan,MA, Flores, CA, Gonzalez-Begne, M, Zhang,Y, Sepulveda, FV and Melvin, JE, 2012.

The state of the science of lasers in dentistry. *Journal of Dental Hygiene*, Romanos GE, 2012.

Role of calcium and PKC in salivary mucous cell exocrine secretion. *Journal of Dental Research*, Culp DJ, Zhang Z, Evans RL, 2011.

The Influence of Verification Jig on Framework Fit for Nonsegmented Fixed Implant-Supported Complete Denture. *Clinical Implant Dentistry and Related Research*. Ercoli C, Geminiani A, Feng C, Lee H, 2011.

Role of Dentifrices with Essential Oil Formulations in Periodontal Healing. *The American Journal of Medical Sciences*. Javed F, Al-Hezaimi K, Romanos GE, 2011.

Clinical Evaluation of Immediate Loading of Electroeroded Screw-Retained Titanium Fixed Prostheses Supported by Tilted Implant: A Multicenter Retrospective Study. *Clinical Implant Dentistry and Related Research* Acocella A, Ercoli C, Geminiani A, Feng C, Billi M, Acocella G, Giannini D, Sacco R 2011

Dental caries recurrence following clinical treatment for severe early childhood caries. *Pediatric Dentistry*, Berkowitz RJ, Amante A, Kopycka-Kedzierawski DT, Billings RJ, Feng C, 2011.

Dental erosion: Etiology, diagnosis and prevention. *RDH*, Ren, Y 2011.

Role of calcium and PKC in salivary mucous cell exocrine secretion. *Journal of Dental Research*, Culp DJ, Zhang, Z and Evans, RL, 2011.

Access to oral health services for urban low-income Latino children: social ecological influences. *Journal of Public Health Dentistry*, Telleen S, Rhee Kim YO, Chavez N, Barrett RE, Hall W, Gajendra S. 2011.

A novel technique for tailored surface modification of dental implants - a step wise approach based on plasma immersion ion implantation. *Clinical Oral Implants Research*, Meirelles L, Uzumaki ET, Lima JH, Muller CA, Albrektsson T, Wennerberg A, Lambert CS. 2011.

An alternative multiple pontic design for a fixed implant-supported prosthesis. *Journal of Prosthetic Dentistry*, Del Castillo R, Ercoli C, Delgado JC, Alcaraz J. 2011.

Caries risk pyramid: a practical biological approach to caries management by risk assessment. *Puerto Rico Health Sciences Journal*, Morou-Bermúdez E, Billings RJ, Burne RA, Elías-Boneta A, 2011

Comparison of modified widman and coronally advanced flap surgery combined with Co2 laser root irradiation in periodontal therapy: a 15-year follow-up. *International Journal of Periodontics and Restorative Dentistry*, Crespi R, Cappare P, Gherlone E, Romanos GE, 2011.

Characterization of the human submandibular/sublingual saliva glycoproteome using lectin affinity chromatography coupled to multidimensional protein identification technology. *Journal of Proteome Research*, Gonzalez-Begne M, Lu B, Liao L, Xu T, Bedi G, Melvin JE, Yates JR 3rd, 2011.

Role of Dentifrices with Essential Oil Formulations in Periodontal Healing. *The American Journal of the Medical Sciences*, Javed F, Al-Hezaimi, K and Romanos, GE, 2011.

Megan Falsetta Lands AADR Award

One never knows the impact of a childhood toy.

As a child, Megan Falsetta's favorite toy was a little red light microscope that came with a box of prepared slides.

"To this day, one of my greatest pleasures as a microbiologist is to use microscopy to examine biological structures, namely biofilms," she said.

Falsetta, a Center for Oral Biology post-doctoral fellow, recently won the second place Hatton Competition Award in the post doctoral category from American Association for Dental Research for a novel therapeutics project that combines naturally-occurring anti-biofilm agents with fluoride.

"The general idea for this research is that our topical application will augment the effects to fluoride to significantly increase its effectiveness without increasing its concentration," she explained. "My role in this research was to test the treatment in an in vitro model system to better understand the mechanism by which the therapy targets the virulence of *Streptococcus mutans*."

Falsetta said that they ultimately found that the therapy is highly effective in vivo (in a rodent model of caries) and that it likely impairs the ability of *S. mutans* to form a biofilm and/or survival endogenous stresses

by repressing transcription of genes necessary for biofilm matrix production/assembly and stress tolerance.

Competing Internationally

Winning second place allowed her to represent North America at the IADR meeting in Brazil. While she did not place, she found the experience very valuable.

"For unknown reasons, my research was included in the clinical/pre-clinical research category, instead of the senior category like the U.S. competition," she added. "Being the only study not involving humans, it was not entirely surprising that I did not place. Nonetheless, it was a good experience and a major honor to have placed in the

North American division.

The meeting was productive and there were a number of very good talks. We were also able to see one the seven natural wonders of the world, Igassu Falls. It was truly breathtaking."

The goal going forward with her research would be to develop a rationale for testing this therapy in humans.

Falsetta's science interests took many directions

before landing with dental research. Aside from the toy microscope, Falsetta watched her mother go through many treatments for cancer, and initially thought she would study cancer biology.

But high school science projects led her down the microbiology path. She studied biology and microbiology at Alfred University, where she spent several years working on an independent project under the tutelage of Dr. Jean Cardinale, a University of Rochester alumnus who received her Ph.D. working with Dr. Virginia Clark.

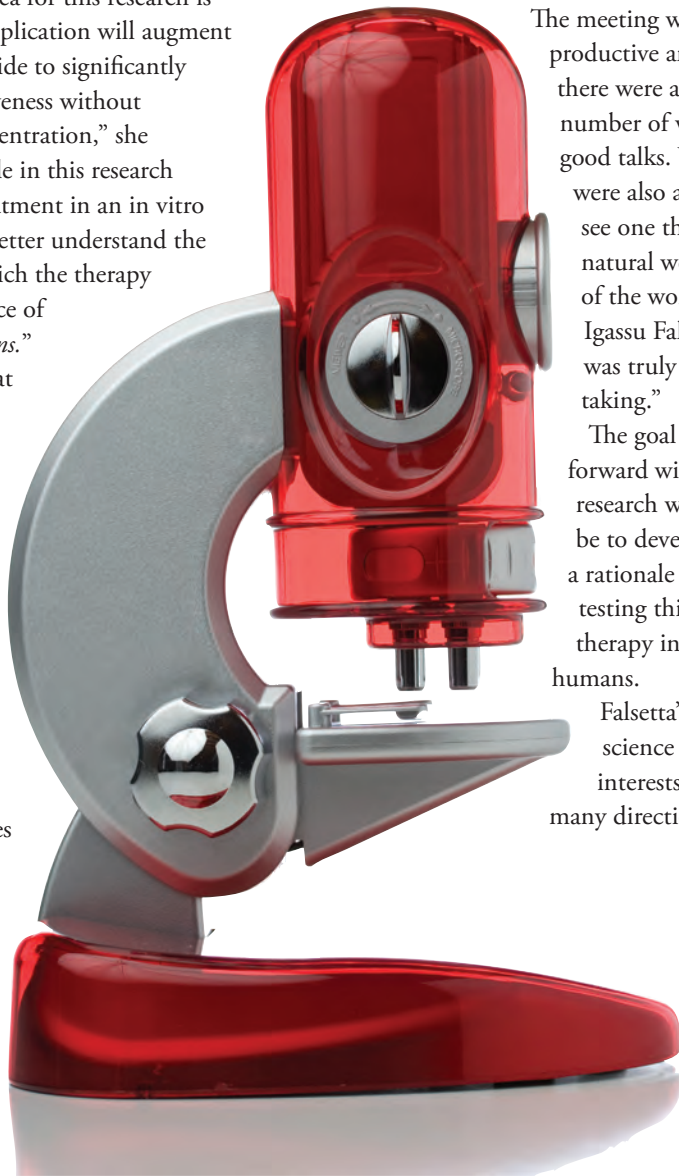
"During my time as an undergraduate, I spent my summers interning in laboratories with a research focus in biofilms, first Dr. Barbara Iglewski's laboratory at the UR, and then at the University of Montana," she said. "Through the course of these experiences, I decided to pursue a career in biofilm research."

Falsetta went on to earn her PhD at the University of Iowa where she studied biofilm formation by the sexually transmitted pathogen, *Neisseria gonorrhoeae*. During that time, her team collected data that supported their hypothesis that biofilm formation by this organism is critical mechanism for infection and persistence within infected women.

She learned of an opportunity from a colleague who was also looking for post-doc appointment.

Pursuing New Science Interests

"He said he had found the perfect job posting for me," she recalled. "The position was at the University of Rochester in Michel Koo's laboratory that involved biofilms, microscopy, qPCR, and various other techniques that I had learned and





*Megan Falsetta, PhD,
Center for Oral Biology
post-doctoral fellow*

became interested in during my graduate career. I was extremely excited when Michel contacted me about an interview and I eagerly accepted the offer following the interview. Not only could I continue my research in biofilms, but I would be able to return to my home state.”

After two years working with Koo, Falsetta says she has fallen in love with the complexity present in the oral cavity. As she

starts her final year of post doc training, she will focus on examining the interactions between *S. mutans* and *Candida albicans* (a yeast), which may influence caries development in young children that have a hyper virulent form of early childhood caries (ECC).

“Initially, I thought I might use my experiences in the Koo laboratory to build on my biofilm knowledge, specifically about

the use and design of multi-species models for studying bacterial interactions, she said.

“However, Michel’s enthusiasm for dental research is infectious, and I am now trying to make the steps toward establishing an independent research program in this field. There are a lot of exciting opportunities in dental research.”

Congratulations to **Robert Tarby, DMD**, (Ortho '12 MS '12) and **Allesandro Geminiani** (Perio '12, MS '12), the first two graduates of the newly revised master's program in Dental Science, which now offers a clinical and translational science track, making it more relevant to those enrolled in clinical programs.

"The program, which I would highly recommend to any resident interested in starting a career in research or education, was of great help to give me the necessary basis to be involved in clinical research as a primary investigator," Geminiani said. "I'm so glad to have the opportunity to work closely with Dr. Ercoli, the best mentor in the history of mentoring!"



Robert Tarby with Linda Ferruzza

Robert Berkowitz, DDS, presented to The Northwest Center to Reduce Oral Health Disparities Social and Political Action Leaders for Oral Health in Washington about improving clinical outcomes for severe early childhood caries.



Jingyuan Fan (center) and Xiuxih Liu (right)

Jingyuan Fan, DDS, and Xiuxih Liu, DMD, won the W.H. Bowen Award from the Rochester Section of the American Association for Dental Research for Scientific Merit.



Judy Belle-Isle

Judy Belle-Isle, RN, associate quality and compliance officer, pictured with her mother Margaret Mattle, won the Shaffer-Devries Award for her significant contributions to dentistry.

Mary Therese Biltucci, RDH, MA, clinical research manager at EIOH, is serving on the NYS AIDS Institutes Dental Standards of Care Committee.



Konstantinos Chochlidakis

Konstantinos Chochlidakis, DDS, won the Basil G. Bibby Award from the Rochester Section of the American Association for Dental Research for Scientific Merit.



Alessandro Geminiani, DDS, (Perio '12), won the Granger-Pruden Memorial award from the Northeastern Gnathological Society in 2011.

Alessandro Geminiani



Adela Guset, DDS (center), and Audrey McNamara, DDS (right)

Adela Guset, DDS, and Audrey McNamara, DDS, won the New York State Dental Foundation Deans Award.

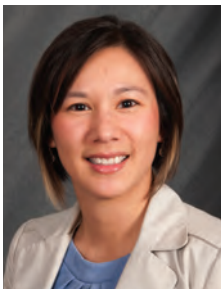
Get Eastman Institute for Oral Health news delivered to your inbox!
Send an email to Elizabeth_Mamo@urmc.rochester.edu to subscribe.



Sandy Halperin (right)

Sandy Halperin, DDS, (Prosthodontics '78), was selected as one of 10 people nationwide to serve on the National Alzheimer's Early-Stage Advisory Group. Halperin was recently diagnosed with early stage Alzheimer's and wants to do all he can to help millions of others and help researchers look for potential cures. He was featured on Tallahassee.com about how he's turning his difficult situation into a productive and positive outcome. He can be reached at SandyHalperin@gmail.com. "Eastman has a huge spot in my heart and soul," Halperin wrote recently. "What wonderful and unforgettable years I spent at Eastman."

Jennifer Haskell, DDS (Orthodontics '10) was inducted as an Affiliate Member of the Angle Orthodontic Society.



Oriana Ly-Mapes

Children with Autism Spectrum Disorders.

Oriana Ly-Mapes, DDS (Pedodontics '12) presented at the International Meeting for Autism Research in Toronto. Her poster was Covariates Associated with Dental Problems in



Steven Meinhold



Joseph Sweet

Steven Meinhold, DDS, clinical assistant professor, Community Dentistry & Oral Disease Prevention, and **Joseph Sweet, DMD**, clinical assistant professor, Orthodontics won the 2012 Part time Faculty Award for Excellence in Teaching.

Cyril Meyerowitz, DDS, MS (General Dentistry '75, MS '80) received the *Rochester Business Journal* Healthcare Achievement Award in the Management Category. The award recognizes excellence, promotes innovation and honors organizations and individuals who make a significant impact on the quality of health care in the Greater Rochester area.



Erin Shope

was titled, Access to Optimally Fluoridated Community Water Systems by Children Born with Orofacial Clefts in NYS.

Erin Shope, DMD (Pedodontics '12), presented at the 69th Annual Meeting of the American Cleft Palate-Craniofacial Association in San Jose, Calif. last April. Her poster

The Society of Craniofacial Genetics and Development established a Research Award in **Geoff Sperber's, BDS, MS, PhD** (MS '62) name for the best research presentation at the annual meeting of the Society held in conjunction with the American Society of Human Genetics. Sperber is professor

emeritus with the Faculty of Medicine and Dentistry at the University of Alberta.



Michael Spoon and Joana Godinho

Michael Spoon, DDS (Orthodontics '91) was invited by **Joana Godinho, DDS** (Orthodontics '07 TMJ '07) to speak at the University of Lisbon School of Dentistry in Portugal. Godinho and two other orthodontists helped start the first university-trained orthodontic residency department in their country, meeting a need to improve patient care. Spoon talked about 3D imaging and dispelling common orthodontics myths.

Michael Spoon, DDS (Orthodontics '91), **Bruce Haskell, DDS** (Orthodontics '75) **Jennifer Haskell, DDS** (Orthodontics '10), presented at the 39th Annual Moyers Symposium and 38th International Conference on Cranio-Facial Research at the University of Michigan. The paper was based on Jennifer's research at EIOH, based on the relationship of skeletal-facial vertical morphology to oropharyngeal airway shape using Cone Beam CT.

Robert Tarby, DMD, won the Michael G. Buonocore Award from the Rochester Section of the American Association for Dental Research for Scientific Merit.

Hector Vesco, DDS, (General Dentistry '81, Orthodontics '83, MS '84) was appointed executive director of The Dental Federation of Central American Countries, which includes Guatemala, El Salvador, Honduras, Nicaragua, Costa Rica and Panama.



Gene Watson

Gene Watson, DDS, PhD, associate professor, was an invited speaker to the Irish Society for Dentistry for Children (ISDC), and presented

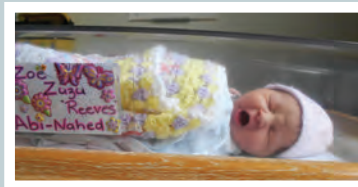
'Neurodevelopmental Outcomes Following Pre-natal and Post-natal Exposure to Dental Amalgam' at Dublin Dental Hospital at Trinity College in Ireland. His hosts were **Anne O'Connell, B.Dent, MS,** (Pedo '91) president of ISDC and **Brian O'Connell, BDS** (PhD '93, Prostho '88). Anne went through the Cariology Training Program in the former Dept. of Dental Research (now Center for Oral Biology). Brian O'Connell worked in the Dept. of Dental Research. They are both faculty at Trinity College.

Joonho Yoon, DDS, MS, PhD, Visiting Scholar, Prosthodontics Division, won the first research prize of the American Prosthodontic Society in 2012.



Michael Yunker

Michael Yunker, DDS, clinical assistant professor of General Dentistry won the Iranpour Award for Excellence in Clinical Education.



Genevieve Abi-Nahed (Ortho '10) and her husband Yamil welcomed second daughter Zoe Zuzu Sept. 28.



Maricelle Abayon (GenDen '09, MS '09, GPR '10) and her husband Rey Tanega welcomed son Renzo Gabriel Abayon Tanega on May 24.



TMJ resident **Tyler Hart** and his wife Jana Hart welcomed Ellery Grace on May 29, pictured here with sisters Faelyn and Lexi



Yu-Ching Lai (Ortho '09) welcomes daughter Luna, born August 18.

The Eastman Institute for Oral Health expresses sympathy to the loved ones of our deceased alumni and friends

Lew Trusheim (OMFS '79, MS '81), March 18, 2012

Jane L. Watko (Gen Den '93), April 3, 2012

Susan Kinder Haake (GPR '80), May 1, 2012

Joseph Leonard Wasileski (OMFS '72, MS '73), Aug. 3, 2012

Making a Gift in Memory of a Loved One

A nice way to honor a beloved friend, colleague or classmate is to make a gift in their memory to a favorite charity. EIOH and Eastman Dental appreciate gifts in memoriam and acknowledge the donors as well as provide the family a list of contributors. Contact Carol Vanini at 585-275-2767 or email cvanini@ur.rochester.edu

Welcome to the URMCC Online Community

alumniconnections.com/olc/pub/URMC/
for Rochester Alumni Exchange

The Rochester Alumni Exchange provides a resource for School of Nursing, School of Medicine & Dentistry, and Eastman Institute for Oral Health (formerly Dentistry at URMCC) alumni to search for classmates and other University of Rochester alumni, and make new connections. Membership in the Exchange is FREE and available exclusively to University of Rochester alumni. Joining the Exchange requires a quick registration process to establish a User ID and password.

First time visitors

Register now to take advantage of all the benefits of Rochester Alumni Exchange membership!

Visiting the site again?

Welcome back! Access to the Rochester Alumni Exchange is easy. Simply select any of the members-only features to the left and enter your User ID and password when prompted.



UNIVERSITY of
ROCHESTER
MEDICAL CENTER

Contemporary Implant, Restorative and Esthetic Dentistry

A Participation Program | Rochester, NY

January 18-19, February 1-2, March 1-2, and April 5-6, 2013



EASTMAN
INSTITUTE FOR ORAL HEALTH



For more information about
the 2013 Contemporary Implant,
Restorative and Esthetic conferences:

Mona Fine (585) 275-5087

or (888) 898-9750

Fax: (585) 273-1235

Email:

Mona_fine@urmc.rochester.edu

Save the Date! Eastman Institute for Oral Health Events

For more information about these events, visit our website: urmc.rochester.edu/Dentistry, call 585-275-2767 or email CVanini@URMC.rochester.edu

Current Concepts in Implant Dentistry: Predictable Surgical Techniques for Soft and Hard Tissue Augmentation in the Esthetic Zone

Keynote Speaker: Dr. Georgios Romanos
Rochester, NY

January 18-19, 2013

For more information, call 585-275-5087 or email Mona Fine at mona_fine@urmc.rochester.edu

Fiber Reinforced Bridges, Bleaching: In-office, Home or OTC. Update on Adhesive Dentistry and Future of Porcelain Materials, Best Techniques for Cementation of Crowns, Veneers and Fiber Posts

Keynote Speakers: Dr. George Tysowsky & Dr. Hans Malmström

Rochester, NY

February 1-2, 2013

For more information, call 585-275-5087 or email Mona Fine at mona_fine@urmc.rochester.edu

American Prosthodontic Society Annual Meeting (APS)

Alumni & Friends Dinner

Palm Restaurant in the Swissôtel
Chicago, IL

February 21, 2013 around 7:00 p.m.

Everything You Need to Know About Porcelain Veneers, Crowns, and Color

Keynote Speaker: Dr. Nasser Barghi

Rochester, NY

March 1-2, 2013

For more information, call 585-275-5087 or email Mona Fine at mona_fine@urmc.rochester.edu

American Association for Dental Research (AADR)/ International Association for Dental Research (IADR)

Alumni & Friends Reception

Seattle, WA

March 20-23, 2013 (TBD)

Dentistry as a Beautiful Art: How to Achieve Highly Esthetic and Predictable Direct Anterior and Posterior Composite Restorations

Keynote Speaker: Dr. Jose-Luis Ruiz

Rochester, NY

April 5-6, 2013

For more information, call 585-275-5087 or email Mona Fine at mona_fine@urmc.rochester.edu

American Association of Orthodontists (AAO)

Alumni & Friends Reception

Philadelphia, PA

May 3-7, 2013 (TBD)

19th Annual Handelman Conference Smile Design, Occlusal and Esthetic Techniques

Keynote Speaker: Gerard J. Chiche, DDS

Rochester, NY

May 10, 2013

For more information, call 585-275-5087 or email Mona Fine at mona_fine@urmc.rochester.edu

American Academy of Pediatric Dentistry Annual Meeting (AAPD)

Alumni & Friends Reception

Orlando, FL

May 23-26, 2013 (TBD)

Annual Allen A. Brewer Prosthodontic Conference

Double Tree Rochester

Rochester, NY

June 7, 2013

University of Rochester Events

Because of Eastman Institute for Oral Health's affiliation with the University of Rochester, you can take advantage of University-wide events.

Visit the University of Rochester website frequently, as new events are added regularly. www.rochester.edu

Questions or Comments? E-mail us at webmaster@alumni.rochester.edu