



published by the Eastman Dental Center  
Rochester, New York  
William D. McHugh, D.D.S., Director  
Jo Helfer, Editor

### Trustee Profile

Louis A. Langie, Jr., president and chief executive officer of Lincoln First Bank, Rochester Division, has the vigor, vitality, determination and focus of a major league player during the World Series.

He joined EDC's Board in 1978 and this year assumed chairmanship of the Capital Campaign; his assignment, to raise the remaining \$743,000 of the \$3,500,000 goal. With the enthusiasm of a convert, Lou decided to host a series of luncheons for chief executive officers of local corporations "to educate the Rochester community on the important work being done by the dedicated staff in this fine facility."

Lou is heartened by the fact that all the executives have been impressed by the Center and its people. He says, "The word is getting out and I haven't heard anybody negative. The Dental Center sells itself. People who would never have seen it are coming in . . . and somewhere along the line someone is going to come through with a big gift. I just feel it!"

The Langie family has been in Rochester for nearly 150 years. Lou's great-grandfather came from Trois Rivières, Quebec, in 1832 to work on the railroad. In 1950 Lou graduated from Princeton with a major in history and joined Langie Fuel Service, the family business.

When Mobil Oil bought the company, Lou stayed on to run it. Mobil wanted Lou to move to New York City and get involved in corporate management. He says, "We weren't anxious to do that after 150 years in Rochester!"

In 1967 Lou numbered among his many community commitments, a directorship in Lincoln First Bank. Alexander Hargrave, then the bank's president and chief executive officer, "kept working" on Lou to get him to come with the bank which was then being formed into a holding company with Lincoln Rochester the lead bank. He did so in July 1968 and "moved from the coal mines into the gold mines!"

Lou became president of Lincoln Rochester in 1974. He made an agreement with himself "to get out of all community activities and devote full time to the bank." He said, "I resigned from nine boards. I had been president of Boy Scouts, CYO, Community Chest and Red Cross and involved with a lot of other things. I got out of them all."

Four years later EDC trustees Wallace Ely and Janet Forbes approached Lou about joining the board. He felt he "had the bank situation fairly well under control and was

receptive to getting back into one or two community activities on a limited basis. Lincoln First had a longtime relationship with the Eastman Dental Center. It was an easy one to say 'yes' to!"

Lou discussed EDC: "The Center was originally built as a clinic to treat Rochester school children. Because the range of the institution grew to encompass education and research, our reputation and influence extend far beyond our immediate locality. Today we have the responsibility to provide clinical care for the people of Rochester and the surrounding region and also to integrate these services with our educational and research programs!"

Lou is also now active in a select number of other community organizations. As trustee of the Gleason Memorial Fund, he feels he "can help them evaluate requests from organizations" because of his background in Community Chest and other volunteer agencies. He is treasurer of the board of trustees of Allendale-Columbia Schools, from which his elder daughter has already graduated and his



younger now attends. He recently was elected vice president of the Rochester Convention & Visitors Bureau.

Lou has faith that downtown Rochester will again become a thriving area. He says, "I think it's going to take some time, but there are too many of us committed to it not to have it work out. . . . We at Lincoln are moving people in as we consolidate operations and we need more space all the time. . . . it's going to be very busy downtown. . . . there's a lot going on and different groups are beginning to jell. The big part is to get the private sector and the city to work together. And they are working together much better today than they ever did before."

Lou spoke of his family. "We're very close. Sally and I have two girls. One is a sophomore at Hood College in Frederick, Maryland. The other is a senior at Allendale-Columbia. We do all kinds of things together. As a matter of fact, since the girls have been five and six, there has been only one vacation Sally and I have taken without them.

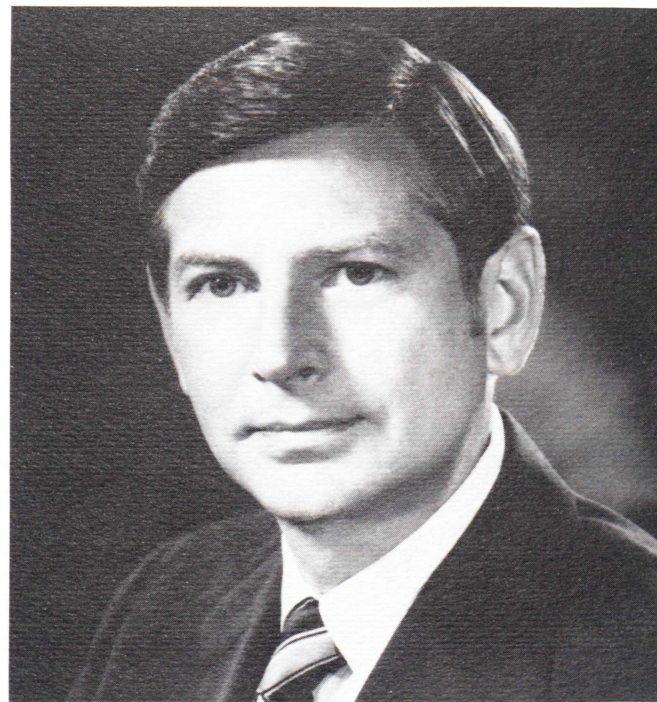


## Trustee Profile . . .

They kind of expect to go with us. I don't know how much longer that will go on. But we schedule our winter vacation to coincide with their vacation schedules. We always take a week at our fishing camp up in northern Quebec. We all went to Europe in the summer of '79 and spent twenty-four days in Germany, Austria, and Switzerland. Two years before that, we did the western parks together. We landed in Salt Lake City and went up through the Tetons, Yellowstone, spent a week 'on horseback' at the Bear Tooth Ranch which is up on the Bear Tooth Wilderness Mountain Range in Montana. Then we went up to Lake Louise and into Lake O'Hara, way up in the mountains. It is the headquarters for the Alpine Club of Canada. It's a place that not many tourists get to. Then we went up to Jasper Park. . . The thing the family likes most to do is fish. . . any kind, deep sea fishing, fly fishing, fresh water, doesn't make any difference. . .

"Sally and I were out fly fishing one night last week on the Spring Brook near Caledonia and the Saturday before that we were down on Lake Ontario, small mouth bass fishing. Every chance we get, we go fishing!"

Lou Langie is a trustee in the tradition established by George Eastman, interested in carrying on the work of the Center "thoroughly, completely, and in the best manner."



State University, is a graduate of Harvard Business School's advanced management program.

He is a member of the board of overseers of Strong Memorial Hospital and a member of the board of trustees of both Hartwick College and Ossmann Components Corporation. He formerly sat on the advisory board of Lincoln First Bank, N.A., and the board of trustees of Channel 21, Rochester's public broadcasting television station.

### NEW TRUSTEE ELECTED

Robert F. Pavelka, vice president and general manager, business operations, Xerox, has been elected to the Board of Trustees of Eastman Dental Center.

Mr. Pavelka, who holds a B.S. in marketing from Ohio

The next issue of MOMENTUM will carry a listing of all contributors to the Capital Campaign. Please plan to make your contribution no later than DECEMBER 1 so your name may be included.

## The Eastman Dental Center Capital Campaign

Name \_\_\_\_\_

Address \_\_\_\_\_

City \_\_\_\_\_ State \_\_\_\_\_ Zip Code \_\_\_\_\_

I (we) hereby pledge to the Capital Campaign.

\$ \_\_\_\_\_ payable as follows: \$ \_\_\_\_\_, herewith

\$ \_\_\_\_\_, on \_\_\_\_\_, 19 \_\_\_\_\_

\$ \_\_\_\_\_, on \_\_\_\_\_, 19 \_\_\_\_\_

\$ \_\_\_\_\_, on \_\_\_\_\_, 19 \_\_\_\_\_

\$ \_\_\_\_\_, on \_\_\_\_\_, 19 \_\_\_\_\_

or \_\_\_\_\_  
(indicate month and year)

I (we)  
would like  
to make  
an annual pledge  
of \$ \_\_\_\_\_  
Please bill me (us)  
every \_\_\_\_\_  
(indicate month)

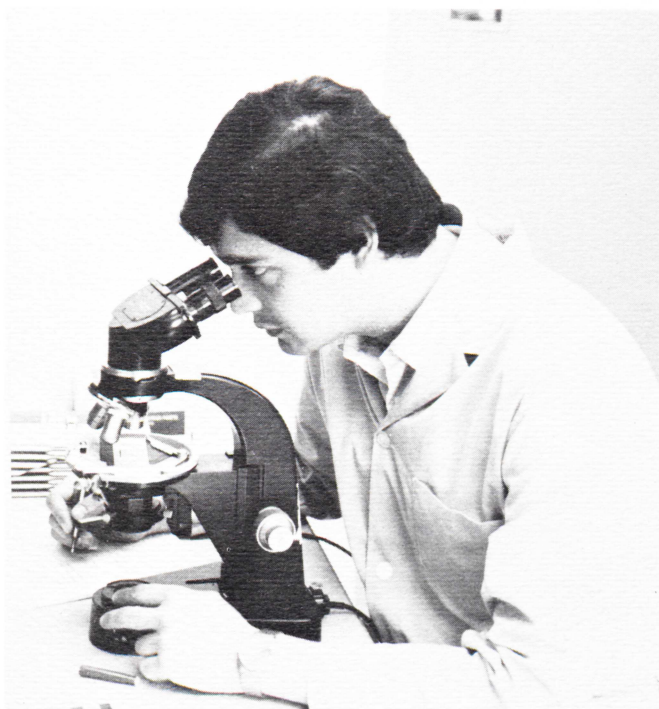
Signature \_\_\_\_\_ Date \_\_\_\_\_

Please mail to:

Louis A. Langie, Jr., Chairman  
Eastman Dental Center Capital Campaign  
625 Elmwood Avenue  
Rochester, New York 14620



## Awards



Eduardo Izaguirre, who received his General Dentistry certificate in June, is the first recipient of a research fellowship recently established at the Center by Pennwalt Corporation.

Eduardo is now working on his Master's. He is studying the synergistic effect of potentially caries-protective trace elements (lithium, molybdenum, strontium, zinc and potassium, among others) with fluoride.

After Eduardo Izaguirre received his D.D.S. in 1977 from the Technological University of Mexico School of Dentistry, he entered private practice in Mexico City and taught at his alma mater. Two years later he decided to further his own education and entered EDC's postdoctoral program.

Eduardo enjoys jazz and says he has heard "excellent players at jazz cafés in Rochester." He also plays the guitar, "mainly pop like Cat Stevens." An outdoorsman, he climbs, camps and is an avid fisherman.

He has a connoisseur's appreciation of modern art and made a pilgrimage to New York City to see the Picasso exhibit at the Museum of Modern Art.



Helmut A. Zander has added another award to his considerable collection. He received the Gold Medal Award of the American Academy of Periodontology at the association's annual meeting in St. Louis in early October.

The Gold Medal, the highest award the academy can confer, is given annually to a dental scientist "for outstanding contributions to the understanding and treatment of periodontal disease."

Dr. Zander, who was chairman of the Department of Periodontics at Eastman Dental Center for 20 years until his retirement from administrative duties in 1977, is also professor of clinical dentistry and dental research at the University of Rochester Medical Center. His involvement in teaching and research continues unabated as he is senior scientist at Eastman Dental Center as well as acting chairman of Dental Research at the University of Rochester.

He was a Fulbright professor at Madras Medical College in India and was a visiting scholar at the University of Dundee in Scotland. Other academic honors include honorary doctorates from both the University of Zurich in Switzerland and the University of Gothenburg in Sweden.

### IN MEMORIAM

Annemaria Zander, Helmut's wife, died September 26. With characteristic spirit he said, on return from St. Louis, "I received congratulations and condolences."

All who were fortunate enough to have met Annemaria remember her love of gardening, her enjoyment of her family and home and, above all, her delight and pride in her husband's accomplishments.

At the suggestion of the Zander family, many contributions in her memory have been made to the capital campaign.

Plans are underway to plant a tree in her memory on Dental Center grounds.



MEMBER PUBLICATION  
AMERICAN ASSOCIATION OF DENTAL EDITORS



## Recent Thesis



Anne Polson's fascination with physiology and anatomy sparked her interest in orthodontics, a specialty she calls "a wide field that covers so many aspects." She finds her work "very challenging," and enjoys the involvement with her patients' physical health, psychological well-being and aesthetic appeal.

Anne enjoys the diversity of her work—clinical practice,

the stimulation of teaching which she says "obliges one to keep up with the field" and research. She is continuing to analyze cineradiographs and is a special investigator on a contract involving the analysis of the long-term effects of orthodontic therapy on periodontal health.

Anne, whose speech retains the engaging cadence of her native French, is a graduate of the University of Bordeaux. She received a certificate in orthodontics from EDC in 1974.

She is a clinical associate in the Department of Orthodontics. Her husband, Alan, is chairman of the Department of Periodontics.

Her thesis supervisor was Dr. J. Daniel Subtelny.

### **A CEPHALOMETRIC AND CINERADIOGRAPHIC STUDY OF THE INFLUENCE OF THUMBSUCKING ON ORAL-FACIAL SKELETAL CONFIGURATION**

**By Anne Parade Polson**

It has been established that thumbsucking is a cause of dental malocclusion. However, the influence of thumbsucking activity upon the skeletal structures of the oral cavity has not been clarified. The present study was undertaken to determine if skeletal alterations could be found in the dento-facial region of thumb-suckers, and if these alterations could be related to oropharyngeal patterns of activity coincidental to thumb-sucking activity.

The sample consisted of 34 subjects, 25 girls and 9 boys, ages 6 to 16 years. Each subject had a strong and prolonged thumbsucking habit. Records were taken consisting of lateral cephalometric radiographs and lateral cephalometric cineradiographs. The cineradiographs were taken during thumbsucking activity. The cephalometric radiographs were traced, anatomic landmarks identified, and angular and linear measurements made. An analysis of co-variance compared these values with corresponding measurements

from lateral cephalometric radiographs of 34 control subjects. The cineradiographs of the thumb-suckers were projected, and selected frames were traced and superimposed to evaluate positional changes of the moving oropharyngeal structures.

The cephalometric analysis showed that thumb-suckers had significantly greater upper posterior facial height and lower anterior facial height, a more anterior positioning of the maxillary complex, and a greater curvature of the lower border of the mandible. The cineradiographic analysis showed that the mandible was maintained in a depressed position and raised and lowered about this position. The tongue was positioned and functioned forward and the soft palate exhibited corresponding positional activity. The degree of thumb insertion into the oral cavity correlated with a greater amplitude of movement of tongue, soft palate and hyoid bone. The greatest amplitudes occurred in the most active thumb-suckers. *It was concluded that muscle patterns during thumbsucking activity may be a contributing factor to the alterations of the oral skeletal framework found in thumb-suckers.*

## Staff News

### **IN MEMORIAM**

**Marguerite F. Little McClellan** died on July 1 of the consequences of acute lymphoma first diagnosed late in March of this year.

A graduate of Saint Xavier College in Chicago, Peggy joined Eastman's research staff in 1950 and, apart from two years with the Canal Zone Government from 1951 to 1953, had been with the Center ever since. Her research focused mainly on enamel structure, caries, fluorides and other trace elements, and her contributions in these areas were widely recognized and admired. She published many papers and was an invited lecturer in many parts of the world. An enthusiastic member of both the International Association for Dental Research and the American Chemical Society, Peggy was very active in both organizations.

In addition to her own research, Peggy was a valuable source of advice on chemical problems and, for these and many other things, she will be sadly missed.



## Alumni News

**JOHN P. BROWN**, Pedo, M.S., '68, was recently at EDC on a five-month sabbatical from the University of Queensland, Australia. He writes from Brisbane: "On my return I was at once caught up in teaching—quite a change from the time at EDC when there was more time for research. On the way back to Australia I attended the ICOB and IADR meetings in Japan. As well as Tokyo and Osaka I saw something of Kyoto and Zara. My good friend Makoto Suzuki (Intern, M.S. '67) and I also met in Osaka. We were students together at EDC and he now is at the University of Western Ontario—in mini-London, as he calls it."

**CHARLES BRENNER**, Pedo '71, sends word of the "birth of a first child, a son, Charles Philip Brenner, Jr."

**WAYNE DILZELL**, Pedo '71, is "associate professor of pedo at LSU Dental School, on staff and an instructor at New Orleans Children's Hospital dental department and continuing private practice in New Orleans!"

**JEFFREY P. FEINGOLD**, GenDen '72, has "become a diplomate of the American Board of Periodontology and practices periodontology in Hallandale, Florida."

**WILLIAM H. MYONES**, GenDen '74, writes, "I have opened a new office for private practice in Pembroke Pines, Florida and teach at Jackson Memorial Hospital's intern program in periodontics." He completed his Perio specialty training at Tufts.

**FRED KASTENBAUM**, GenDen '78, says, "I graduated from Boston University School of Graduate Dentistry prosthetics program in June '80, went into private practice in New York City, and teach prosthetics at NYU."

**ADAN CASASA**, Ortho '79, writes, "On the first of September, I opened a new office in a condominium in a nice commercial area in Mexico City!"

**THOMAS P. FLOYD**, Pedo '80, has pleasant news: "**CARROL A. FENN**, Ortho '79, and I were married in Toronto, Ontario, Canada, on September 5, 1980."

*Stan Handelmann, chairman of the Department of General Dentistry wrote to alumni in August to announce "the linkage of the general dentistry training programs of the Eastman Dental Center, The Genesee Hospital and Strong Memorial Hospital." The purpose is to coordinate admissions and educational programming. A coordinating committee called The Associated General Dentistry Training Programs of Rochester was formed. Stan asked GenDen alumni affiliated with dental schools of other institutions to act as resource people and encourage qualified candidates to apply to the programs. Many agreed to serve as resource people. Some delightful excerpts from letters follow. More will be printed in the next issue of Momentum.*

**CORNELIUS H. PAMEIJER**, '70: "The summer has been fairly busy with of course a lot of band jobs and considerable travelling. It has been an enjoyable one, however, especially with the pool and the heat that we've had (in Boston) during the months of July and August."

**R. DENNIS SPAIN**, '70: "Lord! Has it really been 9 years since we first met? . . . We live in a rambling 16 room Victorian (in Napa, California) with cats, chickens, rabbits, etc. The old house has required total renovation, which will probably never be complete. . . I'm on staff of several hospitals and I am the only general dentist doing work with general anesthesia in a 100 mile radius. . . Aside from being a tooth carpenter I'm enthralled with being 'daddy' to four neat kids. Together we are building a 32 foot ketch beside the house to sail the bay. We backpack for several weeks each summer. The life of the 'landed gentry' suits me well!"

**NEIL HOLLYFIELD**, '78: "I'm completing training (in oral surgery) this year at the Medical College of Georgia. . . Following completion of my program I'm making plans to go into private practice in Virginia."

**MICHEL PERRIER**, '78: "I am working part time at the University of Geneva (Switzerland) . . . I opened a new practice last February in Vevey along the lake of Geneva. It had a tremendous start and I can say that my initial fears disappeared very quickly. The reasons for this positive start are partly due to the fact that I am a 'child of the town,' but they are mainly due to my Rochesterian background."

**CHUNG-MING TSE**, '79: "Hello from 'Downunder.' Finally I made it, after the tedious process of getting the 'necessary papers,' and a long tiring flight from Toronto, Canada, to Perth, Australia. I arrived here on August 19, and formally started working on August 25, at Perth Dental Hospital."

### IN MEMORIAM

**ALI ARAM**, Ortho '57, died in Melrose, Massachusetts, on Sunday, September 21. Dan Subtelny, Ortho's chairman, spoke of Ali and the other members of the department's first class, Pat Bernardo, Edgar Debanne (also deceased) and Young Ho Kim. Ali, a supporter of EDC, and Dan co-authored a paper that appeared in the Journal of Prosthetic Dentistry.

**DANIEL G. MATHERSON**, Perio, M.S., '64, died on Sunday, October 5, in Devon, Pennsylvania, of a sudden heart attack. Helmut Zander remembers Dan as "a loyal alumnus who attended all meetings of the Perio alumni and who was committed to the capital campaign."

### MOMENTUM has lost track of the following alumni.

#### DO YOU KNOW WHERE THEY ARE?

Bernard Adler  
Kiryakica Doku  
Jacob G. Pozansky



**Alumni News Notes are due by December 1, please!**

Name \_\_\_\_\_ Dept. \_\_\_\_\_ Year \_\_\_\_\_

New Home Address \_\_\_\_\_

New Business Address \_\_\_\_\_ New Title or Position \_\_\_\_\_

Other News \_\_\_\_\_

What features would you be interested in seeing in MOMENTUM? \_\_\_\_\_

Please mail to: MOMENTUM

625 Elmwood Avenue

Rochester, New York 14620

**MOMENTUM**

EASTMAN DENTAL CENTER  
625 ELMWOOD AVENUE  
ROCHESTER, NEW YORK 14620

NON-PROFIT ORG.  
U.S. POSTAGE

**PAID**

ROCHESTER, N.Y.  
PERMIT NO. 532