

# MOMENTUM

Volume 1, Number 1 / April 1974

News & Viewpoints  
for Eastman Dental Center  
Alumni & Friends



published by the Eastman Dental Center  
Rochester, New York  
William D. McHugh, D.D.S., Director  
Sue Bricker, Editor



## From The Director's Chair

Several events of great significance to Eastman Dental Center have taken place in recent years and I will take advantage of this first issue of 'Momentum' to outline the most important ones.

In 1970, Dr. Basil G. Bibby retired from the Directorship. No one has had a greater influence on the Center, and its current national and international reputation are due, in great measure, to the vision and vigor with which he guided its affairs. He continues in the Center as a very active researcher and currently leads a group investigating the relative cariogenicity of various types of snack foods - as well as finding a little spare time for tennis.

I was appointed Director of the Center in November 1970 and simultaneously to a new post as Associate Dean for Dental Affairs in the School of Medicine and Dentistry of the University of Rochester. This brought together, for the first time, the administrative responsibility for dental programs at the Center and at the University and is one of the factors which has led to a much closer working relationship. A formal affiliation between the two institutions was ratified by both boards of trustees in 1971.

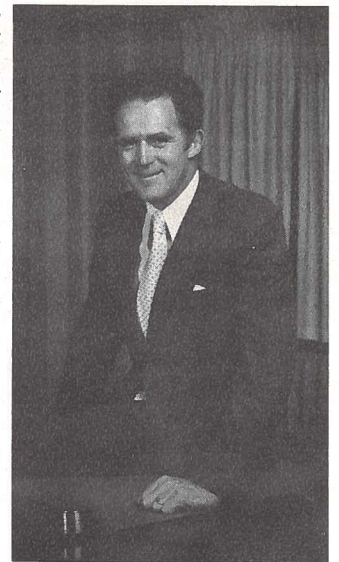
A new program, the Clinical Teacher Training Program, was started in 1971 as a joint venture by the Center and the University. This program integrates training in a clinical specialty area with work in a related basic science and leads to the award of a specialty certificate and the Ph.D. degree. Its objective is to produce clinical teachers and researchers of the very highest quality and we have great hopes that it will help to meet the very serious shortage of such people. Five Fellows are currently enrolled in the program.

An in-depth review of the Center's programs and goals was started by the staff and trustees in 1972. This led to the conclusion that the current balance of programs was good and should be continued into the foreseeable future with the following objectives: "To provide high quality oral health care, to operate programs of advanced education for graduate dentists, and to conduct dental research. Excellence shall be the keynote of all these activities."

Analysis of the Center's facilities and equipment was then carried out and it was decided that major remodelling or rebuilding was needed. Engineering and other consultants examined the present building, and provided estimates of the cost of this remodelling compared to the cost of a new building. With the possibility of providing a new building on a new site, the advantages and disadvantages of locating close to the University of Rochester Medical Center were investigated. Advantages included greater opportunity for intellectual interaction with both staff and students, easier access to medical school departments, the possibility of sharing expensive research, library and other facilities, and the easier availability of the patient-care facilities of a large modern hospital. Disadvantages of such a move included the greater cost involved, possible inconvenience to some of the Center's patients, perhaps some loss of the Center's separate identity, and the loss to downtown Rochester.

A study of where the Center's patients came from showed a surprisingly wide spread and revealed that 70% travel to the Center by private car. Because of this and the availability of good bus services to the Medical Center area, it was concluded that the move would not inconvenience many patients, and indeed would result in better service to patients.

To obtain an objective view of the many issues involved, an external committee was invited to visit the Center, review the material that had been collected and give its views on future development. This committee consisted of Dr. Seymour Kreshover, Director of the National Institute of Dental Research, Dr. Paul Goldhaber, Dean of Harvard University Dental School, and Dr. Edward Dreyfus, Commissioner for Health and Hospitals, Denver, Colorado. After visiting and meeting with trustees, staff, students and some patients, this committee expressed its approval of the general objectives of the Center, and recommended relocation on a site close to the University Medical Center. This recommendation and all other available evidence was considered by the Center's Board of Trustees in December 1973. Agreeing that the advantages of such a move greatly outweighed the



disadvantages, they decided to proceed with negotiations with the University for the purchase of a suitable site close to the Medical Center. In doing so, the Board reaffirmed the continuing and future independence of the Center, while looking forward to closer cooperation with the medical school and hospital. Negotiations for the purchase of a site are progressing well and it now seems likely that the new Eastman Dental Center will be ready in about three years.

There have been many other major developments in the Center, some of which are described elsewhere in this issue. It has been a pleasure to welcome Drs. Dennis Leverett and Odd Sveen as chairman of the departments of community dentistry and pedodontics, respectively. Each has already made substantial contributions and will undoubtedly make many more.

We at Eastman Dental Center are justifiably proud of the Center's alumni. We hope that they, in turn, retain some affection for the Center and interest in its affairs. May 'Momentum' provide a means of keeping this interest informed and current.

William D. McHugh, D.D.S.  
Director

*(Dr. McHugh has been director of the Eastman Dental Center since November 1970. A diverse background in the field of dentistry, distinguished by many awards and honors, characterizes his career. British-born and educated, he earned his dental degrees at St. Andrews University, Dundee, Scotland, and has been head of the department of periodontology and professor of dental health there. In 1963 he was a research associate at Eastman, and has been active in research at several other institutions. Dr. McHugh also holds the position of associate dean for dental affairs at the University of Rochester School of Medicine and Dentistry.)*



### Notes On A Name

Why 'Momentum?' This question has been asked repeatedly since the name was chosen. Why not something more descriptive - Alumni News or Eastman Dental Center Newsletter, for example.

Well, we liked the sound of the word, for one thing. But 'Momentum' is more descriptive than it might appear at first glance:

*momentum: the force of motion acquired by a moving body as a result of the continuance of its motion*

This is, in a sense, what the Eastman Dental Center is about. Eastman is built not only of bricks and tiles, dental chairs and x-ray units, test tubes and charts, but of people - people who come here and contribute something to the institution. Eastman is a bit better for their having been here and they, too, have benefited from the experience. And as one man or woman leaves to move on to something new, another appears to create a place of his/her own.

Eastman is a moving body. It has been almost 60 years since the founding of the original Rochester Dental Dispensary in 1915, and the numerous changes show that this institution has not been standing still.

The name has been changed twice. The first change was to honor the institution's benefactor, who not only provided the finances but also initiated that sense of progressive movement that still exists today. George Eastman recognized a need for dental care with an understanding that is probably not found among the average layman even today, and his concern for the future of 'his' institution was often expressed by surprise visits to the clinic at 9 a.m. to insure that everything was being handled properly.

Many years later, in 1965, the name was again changed, this time to reflect the fact that Eastman had become a multi-purpose institution - a special Center where dental education and research stand side-by-side with patient care.

The educational programs that have become part of the Center over the past two decades have changed through the years to meet current needs. Research continues here, with the completion of one project, and its conclusions, leading to the start of another.

People who are part of these programs change too, growing as a result of their experiences.

Among those who have been the cause of change at EDC, and who have felt its effect in the resulting progress, are the Center's alumni. They have been part of Eastman's momentum, and a major purpose of this publication will be to serve as a link between them and the institution they and others have helped to create.

'Momentum' is intended to be a two-way exchange, and it will reflect what we hear from you. Keep us up-to-date on your activities - promotions, appointments, opening of a new office, honors and awards, and personal information. Tell us what you would like to see in future issues - EDC news, news of alumni, commentary, etc. At this time we plan two issues a year, but if there is a demand for a more frequent publication we will meet that demand.

We'd also like to ask you, if you haven't already done so, to please fill out and return the alumni questionnaire about your current activities that was sent to you by EDC. If you haven't received a questionnaire, or if you know any alumni who haven't received one, please let us know.

'Momentum' is for others, too: for those who make up the staff of the Dental Center today, and for those who previously held positions here; for the members of the board of trustees, a very vital and active group of people who are giving time to make things happen here; and for many others who have shown an interest. These people have given something, and in the process of giving have contributed in some way to the Eastman Dental Center's momentum. - **SB**

## Orthodontic Alumni Continues Its Success

by Dr. Albert Guay, President

The Eastman Orthodontic Alumni Association will hold its biennial meeting in Rochester, June 2 to 5, 1974. This marks the tenth anniversary of the first meeting of the association. Besides papers and clinics by the members and current students at Eastman, the program will feature a special seminar on cranio-facial anomalies by Dr. Samuel J. Pruzansky, Director, Center for Cranio-facial Anomalies, Abraham Lincoln School of Medicine, Medical Center, University of Illinois. Dr. Pruzansky enjoys an international reputation in the field of cranio-facial anomalies and his contribution to the up-coming meeting will be extremely valuable.



The association, which draws its membership from individuals who have been granted a certificate of graduate training by the Department of Orthodontics of the Eastman Dental Center, was founded by a group of graduates headed by Dr. Howard Aduss, of Chicago, between the years 1962-64. Dr. Aduss organized the first meeting, which was held in Rochester in June of 1964, and was elected the association's first president.

Meetings of the association are held biennially in Rochester and provide a happy blend of academic and social activities for those attending. These meetings serve to allow the members to actively maintain their interest in the orthodontic department of the Eastman Dental Center, as well as the Center itself, to share original research and clinical information with their colleagues, to participate in seminars with outstanding researchers and clinicians, and to keep Rochester and Eastman friendships alive and flourishing.

The support for this association by the orthodontic alumni has been excellent. This is probably due to the fact that it presents an opportunity for the alumni to gather together periodically in Rochester and to enjoy a unique forum for the exchange of information about orthodontics. What distinguishes this meeting from national and regional orthodontic meetings is that this association provides the opportunity for informal and intimate discussions with essayists both during and after the scientific sessions. Due to the size of the association and the informal meeting structure, a free-flowing discussion about topics under consideration can occur, with the audience encouraged to participate.

Since a large number of Eastman alumni are associated with universities or other teaching institutions, current view-points on many contemporary areas of interest in orthodontics can be presented.

Outstanding orthodontic clinicians, teachers and researchers have responded well to invitations to present seminars for the members at the biennial meetings. Past guest clinicians have included Dr. Charles Burstone, Dr. Joseph Jaraback, Dr. Alton Moore, Dr. Elbert King and Dr. Robert Ricketts.

With the meeting format as it is, with the wide-spread educational activities of the membership and with the willingness of outstanding orthodontists to contribute to the

association, the scientific success of the Eastman Orthodontic Alumni Association seems assured.

The administrative business of the association is carried on between biennial meetings by the elected officers, which include a president, vice president and secretary-treasurer who are elected to serve for two years; and a board of directors made up of six members, each serving for six years, with two replaced at each biennial meeting. Financing of the activities of the association is accomplished solely from support by the members.

A newsletter is published periodically. News items are solicited from the members about themselves and their activities and are included along with items of association business. The frequency of publication is not set; however most activity seems to occur around the time of the biennial meeting.

The organizational success of the association has been the result of much interest and work on its behalf by the officers and board of directors. The past presidents of the association include the following:

Dr. Howard Aduss; Dr. Robert Rosenblum;  
Dr. William Todd; Dr. Richard Offerman.

The current officers of the association include:

Dr. Albert Guay, President; Dr. Justin Martin,  
Vice-President; Dr. Howard Starnbach,  
Secretary-Treasurer.

Board of Directors: Drs. Girard Gugino; Ernest  
Rider; Richard Rohrer; Ross Mason; Douglas  
Bayne; Leonard Fishman.

Some of the association's efforts have been beneficial to the Department of Orthodontics at Eastman. In 1970, the association presented a complete bound set of the "Angle Orthodontist" to Dr. J. Daniel Subtelny for the department's library. It is anticipated that additional gifts of such a nature will be presented to the department in the future.

The encouragement and support for the activities of the Eastman Orthodontic Alumni Association given by Dr. Subtelny and the entire Eastman staff has been of great assistance in the development and in the continued vitality of the association. A great deal of credit must also be given to the Rochester-area alumni who work very hard on local arrangements for the biennial meetings.

What has been the motivating force behind the continuing interest of the orthodontic alumni in the Eastman Dental Center and in the Eastman Orthodontic Alumni Association which has caused the association to flourish? Probably foremost is each member's recognition of the quality of the orthodontic training he received at Eastman and his desire to continue to be associated with a training program of such a high quality. Many recognize that Eastman is a leader in both orthodontic research and therapeutic innovation, and is at the forefront of orthodontic thinking and development for the future, and they like to be "where the action is." This is important to the members of the association, for as students they learned the need to continually strive for the excellence in orthodontic therapeutics and research that leads to advances and innovation in treatment.

The development, success and continuing activities of the Eastman Orthodontic Alumni Association, besides being of great benefit to the membership, are also an on-going tribute to Dr. Subtelny and the Eastman staff.



**There've Been  
Some Changes Made . . .**

*Dr. Terence W. Cutress* has been appointed Director of the Dental Research Unit of New Zealand, after serving as acting director since early 1973. Dr. Cutress was research associate at EDC from 1961-63, and at the same time earned a Master of Science degree from the University of Rochester. He returned to Eastman in 1972 to complete another year of research here. He also holds a Ph.D. from the University of London.

*Dr. John Cleall* has been appointed chairman of the department of orthodontics at the University of Illinois. From 1961-64 he was a research associate at EDC, working with the department of orthodontics. He is a graduate of the University of Otago Dental School, New Zealand, and also earned an M.D.S. degree there.

*Dr. Gerald Graser* has opened an office for the private practice of prosthodontics in Rochester, N.Y. He earned his specialty certificate at EDC in 1972, and is currently completing requirements for the Master of Science degree from the University of Rochester.

since many of you last saw Rochester - new faces, new programs, even a new wing on the building. We'll give you a quick rundown, here, and in future issues we'll feature some people whom you would like to know better as well as highlight different departments from time to time.

- Director:* William D. McHugh
- General Dentistry Residency:* Stanley Handelman, chairman;  
Ronald Kwasman, assistant chairman.
- Community Dentistry:* Dennis Leverett, chairman.
- Oral Surgery:* Bejan Iranpour, chairman.
- Orthodontics:* J. Daniel Subtelny, chairman;  
Karl Musgrave, assistant chairman.
- Pedodontics:* Odd B. Sveen, chairman.
- Periodontology:* Helmut A. Zander, chairman;  
Alan Polson, assistant chairman.
- Prosthodontics:* Allen A. Brewer, chairman.
- Radiology:* Cesar Guzman, head.
- Caries Research:* Fred Losee, head.
- Dental Materials and Chemistry:* Michael Buonocore, head.
- Microbiology:* Marion N. Gilmour, head.