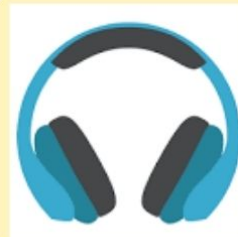


# ***BE A PART OF BATTEN RESEARCH!***

***Cognitive Neurophysiology Lab  
(CNL)***

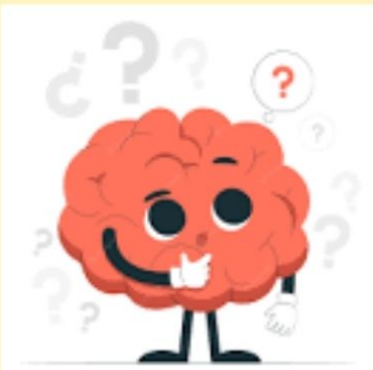


## **Our Study:**

Our EEG studies help us understand how the brain processes information from our senses.

This study hopes to find markers of brain activity that correspond to instances of cognition in response to auditory stimuli.

The goal of this study is to understand more about the symptoms of NCL disorders and how those symptoms change over time.



## **What will participants do?**

Participants will complete an electroencephalogram (EEG). An EEG is designed to evaluate the electrical activity in the brain. It is safe and non-invasive.

Participants will passively listen to tones through headphones.

The experiment should last around 3 hours and we offer participants breaks whenever needed.

Participants will be compensated for their time



## **Contact Us!**

**Email:**

**[erin\\_bojanek@urmc.rochester.edu](mailto:erin_bojanek@urmc.rochester.edu)**

**Or**

**Call: 315-335-2602**



THE FREDERICK J. AND MARION A. SCHINDLER  
**COGNITIVE NEUROPHYSIOLOGY  
LABORATORY**

RSRB Approval Date: 7/8/2024