

# PARTICIPANTS NEEDED FOR AUTISM RESEARCH

## WHO are we recruiting?

Children with and without autism who:

- Are 6-17 years old
- Have normal hearing
- Have normal/corrected vision
- Have no history of major head injury
- Participants with autism should have a formal clinical diagnosis



## Payment

\$18 per hour  
\$25 for parent

## WHY study senses?

To learn more how people on the autism spectrum process sensory information so we can better understand how it affects their everyday lives.

## HOW we study auditory/visual processing

Over at least 2 visits  
(3-4.5 hours each) your child may be asked to:

Participate in  
cognitive testing

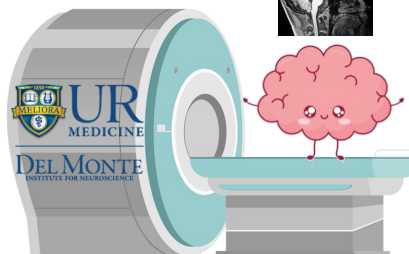
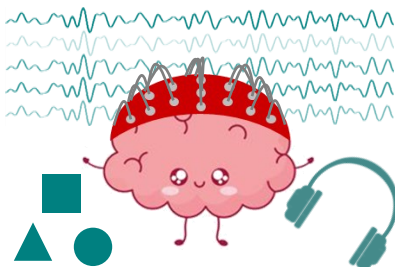


Look/listen to stimuli while we record activity with

**EEG**

and/or

**MRI**



## Interested?



THE FREDERICK J. AND MARION A. SCHINDLER  
COGNITIVE NEUROPHYSIOLOGY  
LABORATORY

## Contact:

ASDresearchCNL@  
URMC.rochester.edu

or 585-275-8749

Free brain pic for  
MRI participants!



THE FREDERICK J. AND MARION A. SCHINDLER  
COGNITIVE NEUROPHYSIOLOGY  
LABORATORY



RSRB Approval Date: 10/29/2024