

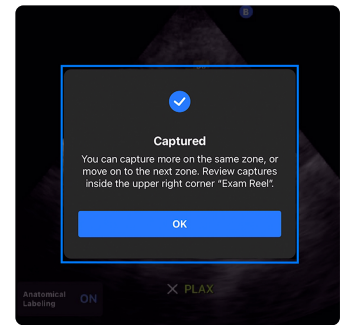
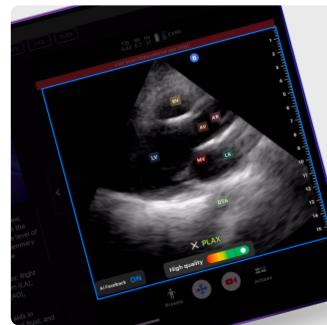
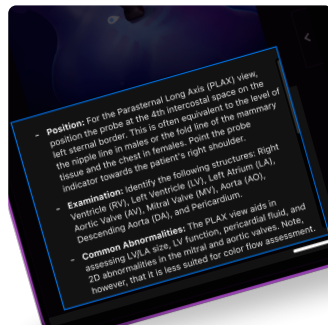
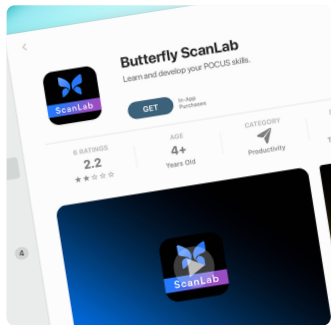


# The future of ultrasound education is here.



## ScanLab™ is a mobile educational app that provides users with a tool to practice scanning and establish the repetitions that build confidence in scanning technique.

Our educational app pairs with your Butterfly probe and is powered by deep learning algorithms. The application guides you through a clinical standard ultrasound protocol and breaks it down into individual steps, providing supporting material to help strengthen scanning skills and your ability to acquire diagnostic-quality images.



1. Download the mobile app from the App Store.
2. Login using your Butterfly Cloud credentials.
3. Plug your Butterfly device into your iPad, and select the exam type you'd like to practice.
4. (a) Use the left-screen instructions for guidance on accurate probe placement, identifying essential anatomy, and learning common abnormalities for each view of the clinical protocol, plus clinical tips and tricks.  
(b) Toggle to Reference Scans to view examples of high quality diagnostic scans.
5. Anatomical labeling and quality indicators show on the right, giving you feedback on the image as you scan.
6. Capture your images and move through the protocol by clicking on the steps at the top.
7. Review your captures or acquire more captures for any of the steps before finalizing your exam.
8. Your exams will be saved to your Butterfly Cloud account in the education tab.



Scan here to watch our ScanLab™ tutorial or visit [www.butterflynetwork.com/education#scanlab](http://www.butterflynetwork.com/education#scanlab)

\*Terms and conditions apply. For educational use only. Not for diagnostic use. ScanLab is a separately downloadable educational app included with your Butterfly membership.

Available on iPad only. 980-24013-00 Rev A