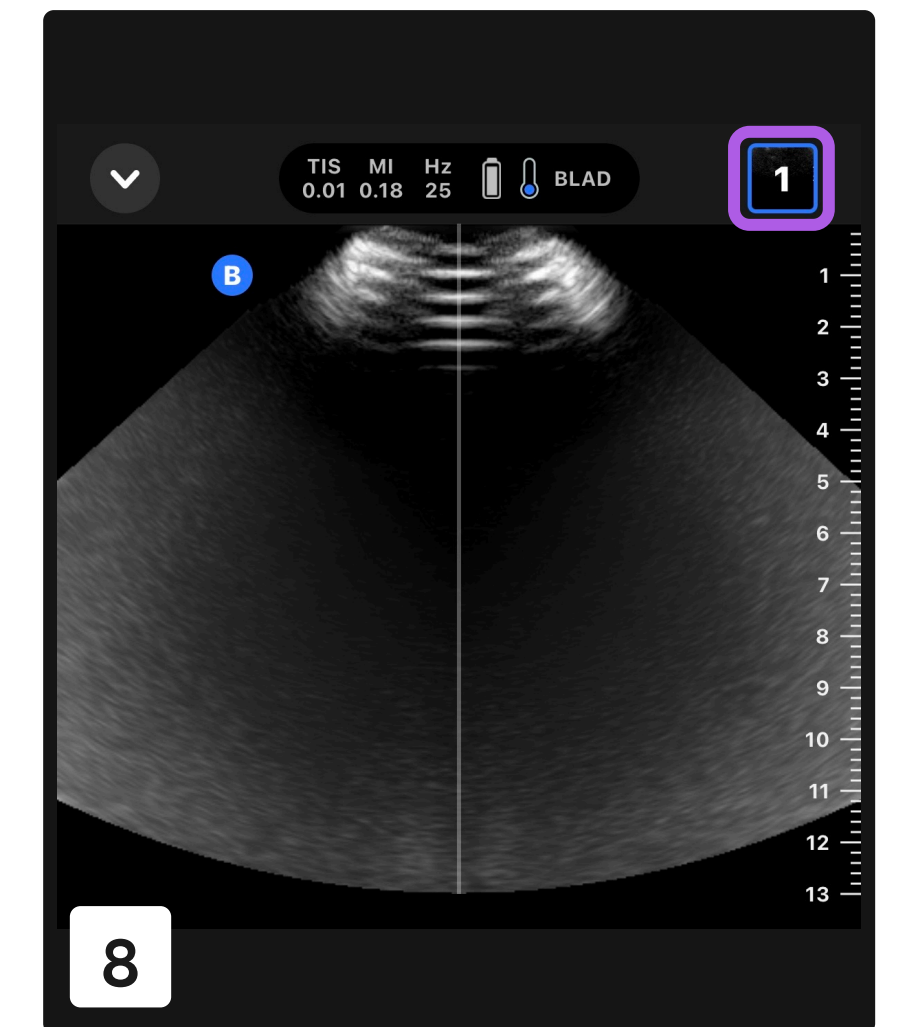
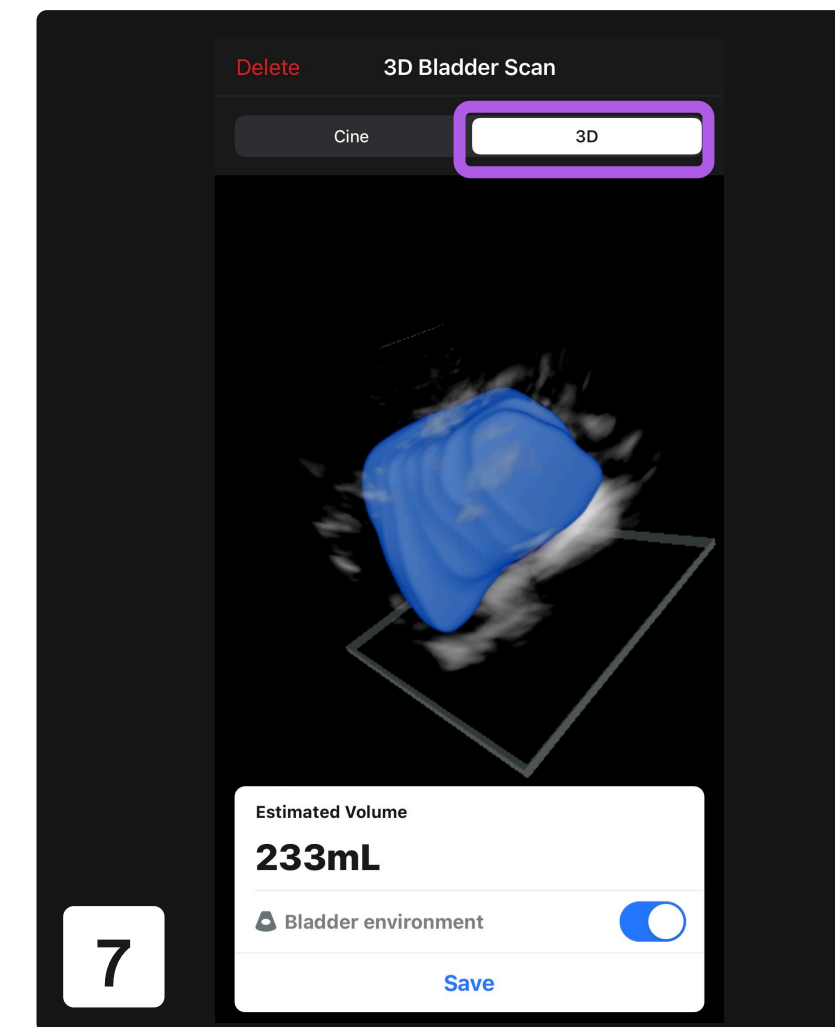
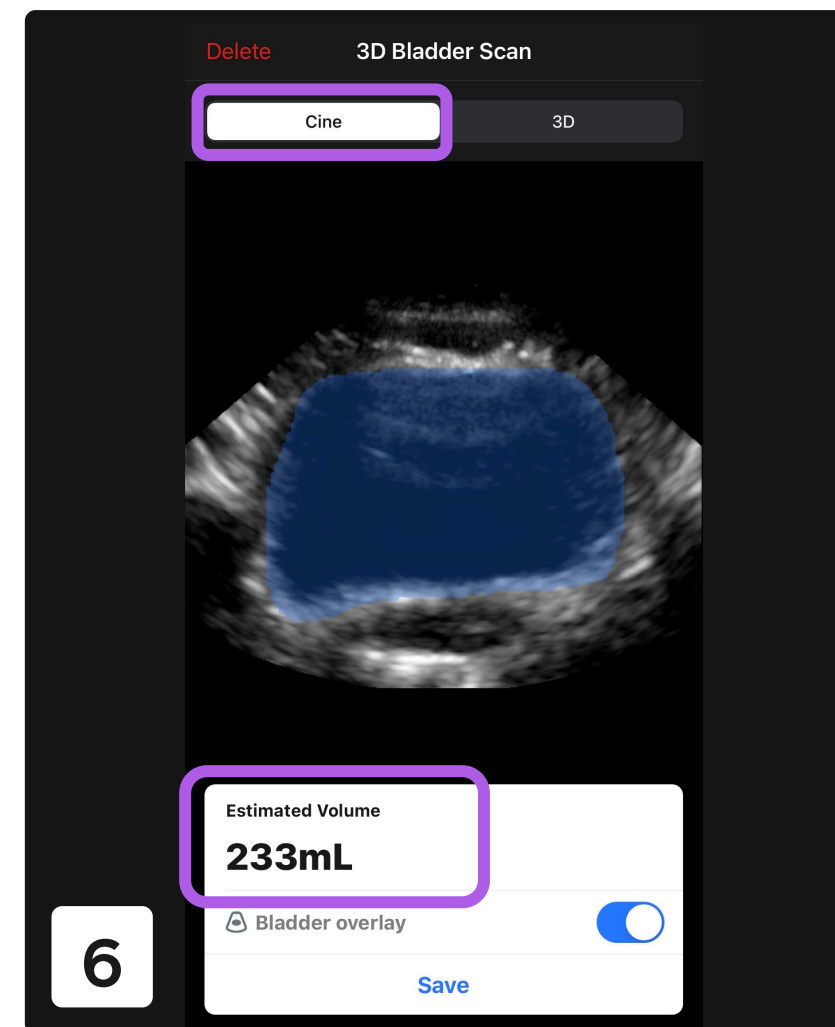
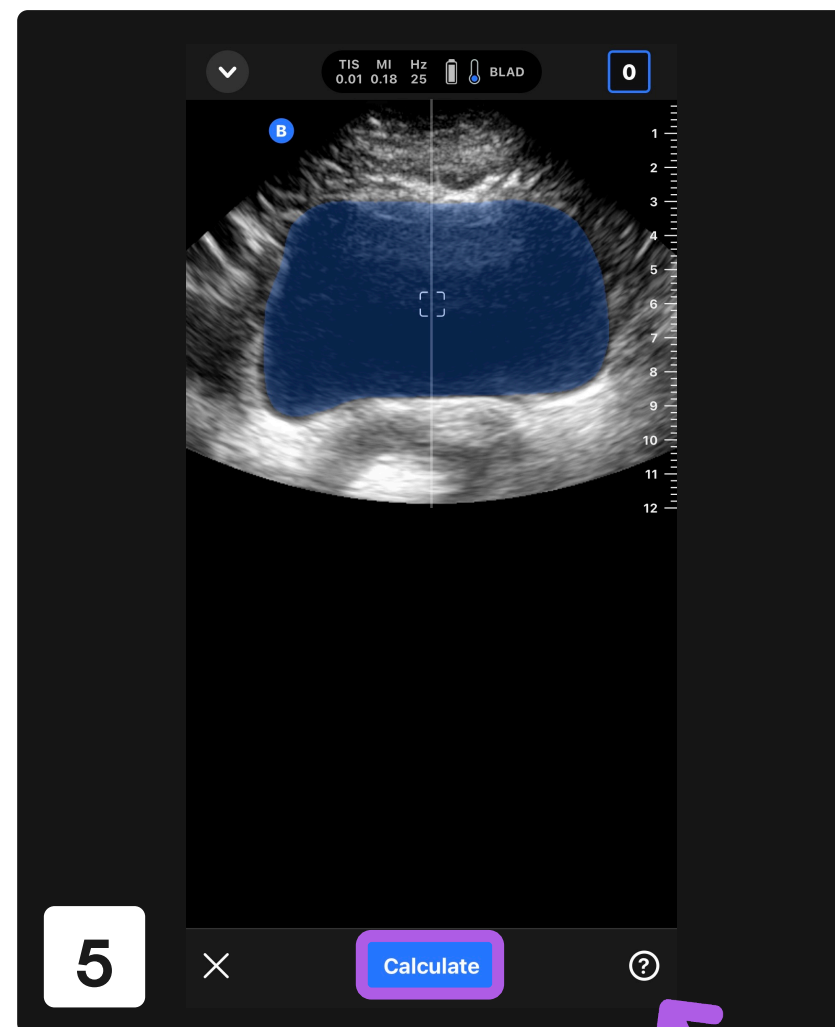
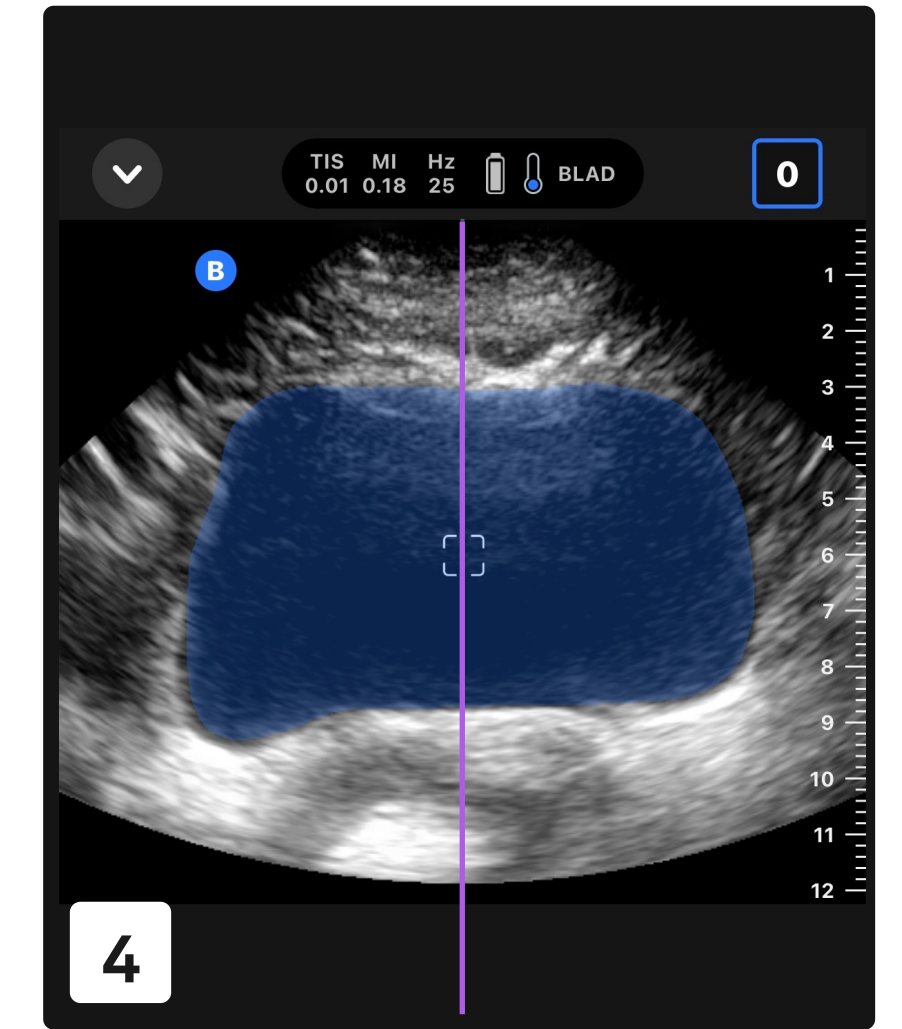
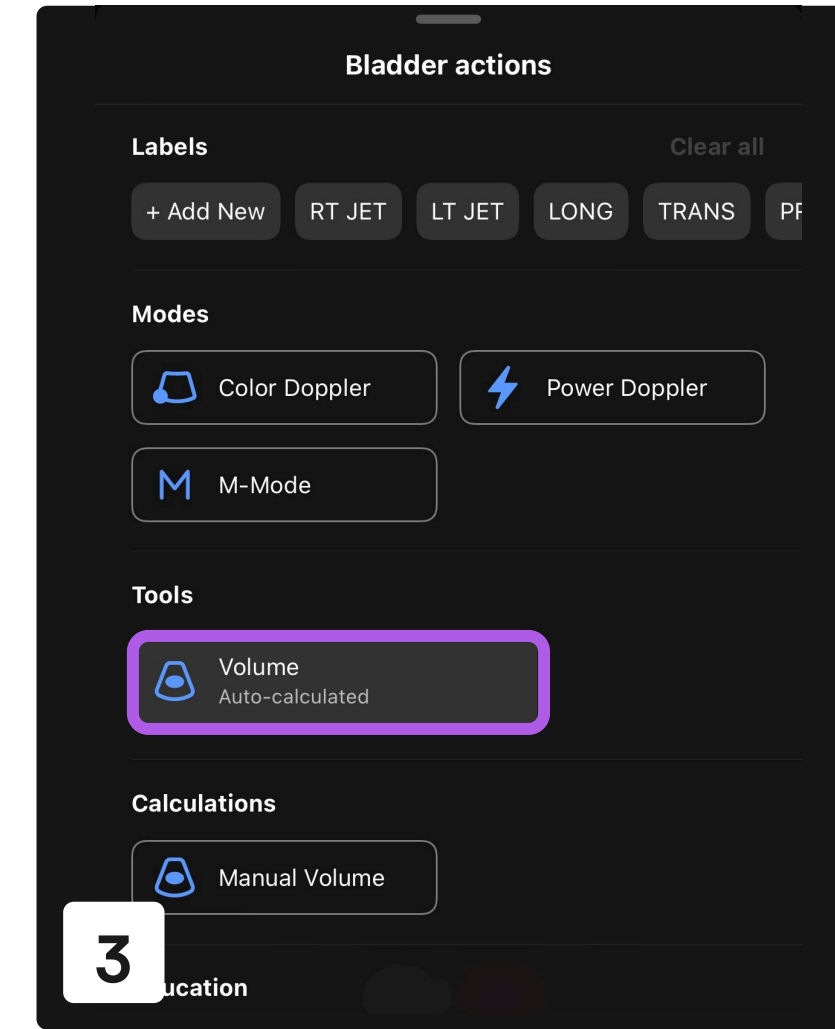
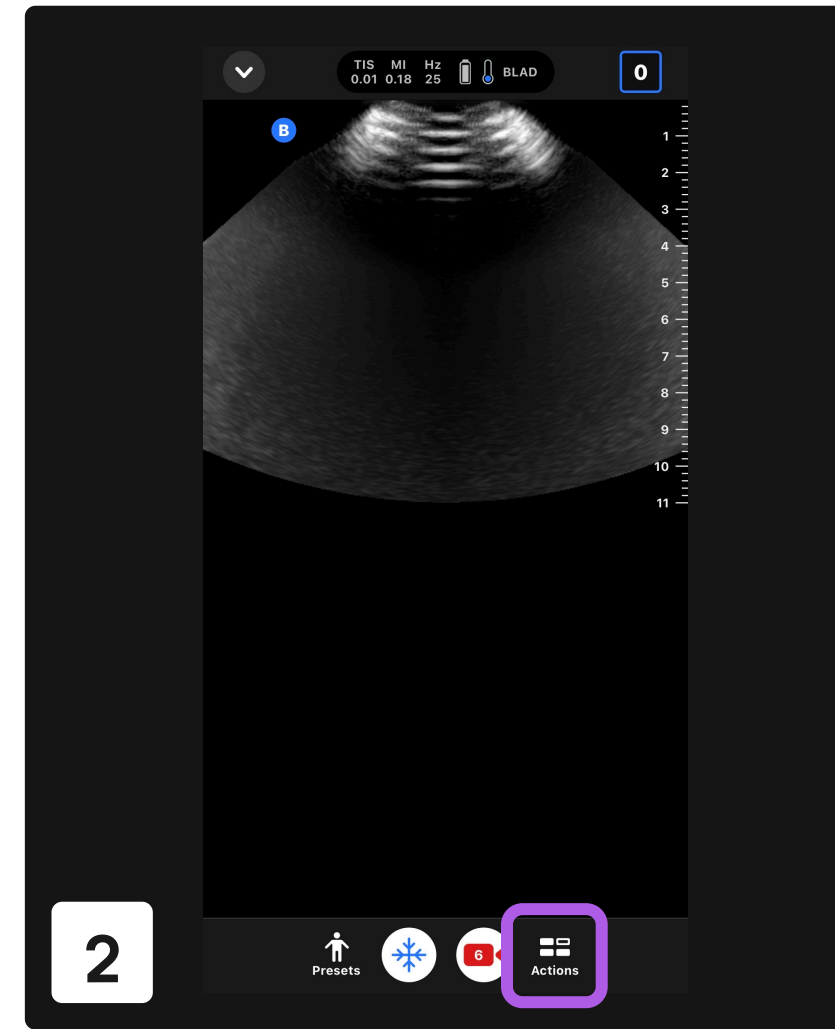
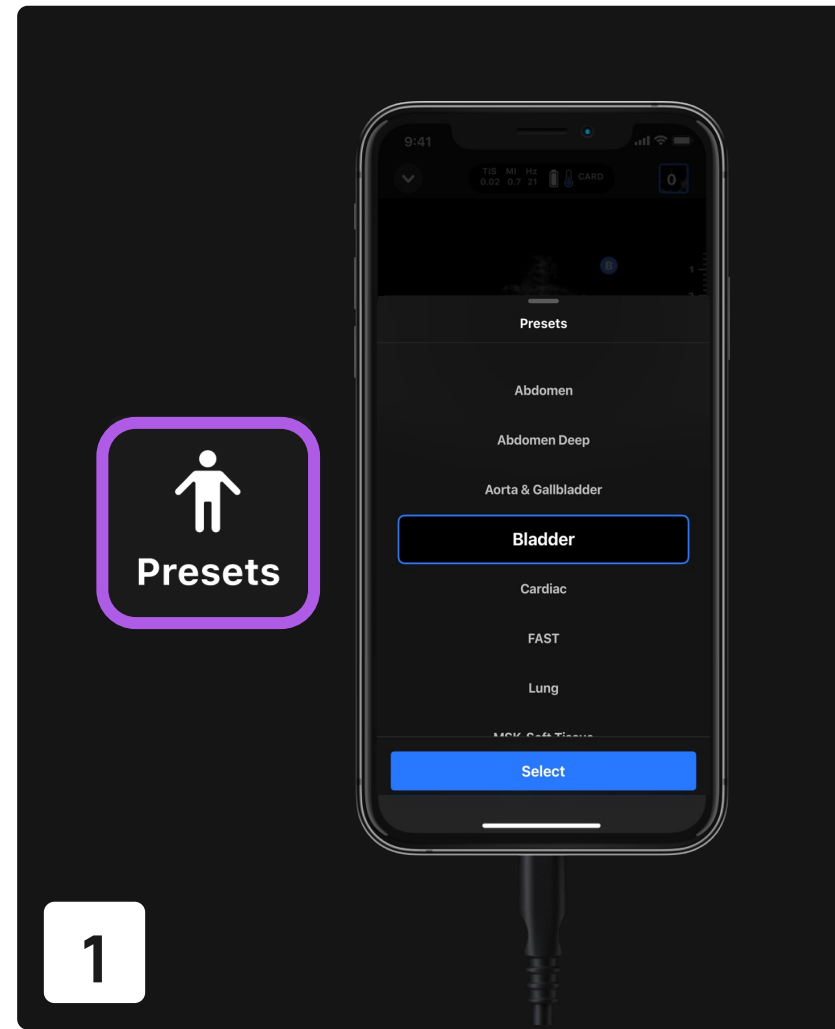


Auto Bladder Volume.

The Auto Bladder Volume tool provides a non-invasive calculation of bladder volume using transabdominal ultrasound.

1. Select the Bladder preset.
2. Select the Actions button on the bottom of the screen.
3. Under Tools, select Volume - Auto-calculated
4. Position the transverse probe at the level of the pubic symphysis so that the bladder appears at its widest and is centered on the screen. A blue shape highlights when the tool detects a bladder. Use the vertical line down the center of the screen to help center the bladder.
5. Select Calculate. A 3D sweep of the bladder is automatically acquired. Do not move the probe during the sweep.
6. After successfully capturing the bladder, a volume is displayed at the bottom of the screen. The cine above the volume result displays the images and estimated bladder used to calculate the volume.
7. If applicable, tap the 3D bar to visualize an interactive 3D render of the bladder to validate that the whole bladder has been captured in the sweep. Note: the 3D render is not for diagnostic use.
8. To save the estimated volume result for review, select Save from the bottom of the Bladder Volume result screen. The captured cine loop with the bladder volume estimate and bladder outline is saved to the Capture Reel.



Note: For help using the Auto Bladder Volume tool, including information about proper probe positioning, tap the question mark on the bottom right of the screen while Auto Bladder Volume is enabled.



Scan QR code to view the Butterfly iQ+ Auto Bladder Volume Tool Tutorial